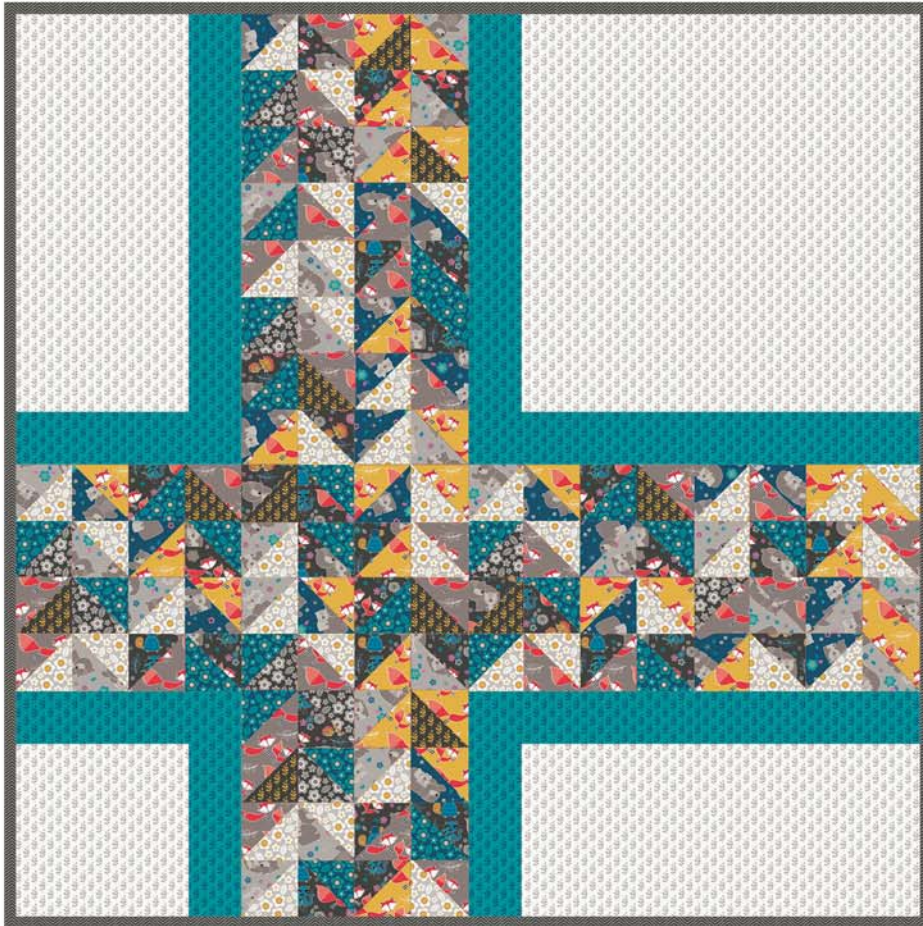


Andrea Turk for
Cinnamon Joe Studio



Crossroads Quilt (Q-021)



Fabric requirements



Fabric A
9140603 #1
Fat Quarter



Fabric B
9140604 #2
Fat Quarter



Fabric C
9140604 #3
Fat Quarter



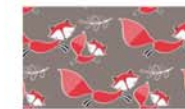
Fabric D
9140601 #3
Fat Quarter



Fabric E
9140603 #2
Fat Quarter



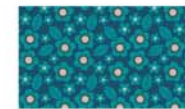
Fabric F
9140605 #3
Fat Quarter



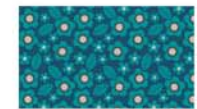
Fabric G
9140602 #2
Fat Quarter



Fabric H
9140602 #3
Fat Quarter



Fabric I
9140604 #1
Fat Quarter



Fabric J
9140604 #1
Fat Quarter



Fabric K
9140605 #1
3/4 yard



Fabric L
9140605 #2
1-3/4 yards



Fabric M (binding)
2144-0085
5/8 yard



Backing
9140601 #2
4-1/2 yards



Exclusive Quilt Design by Jessie Kurtz of Harding Hill Designs for Camelot Fabrics
Fabric collection: Mama & Me by Andrea Turk of Cinnamon Joe Studio for Camelot Fabrics
The direction of the fabrics in the digital imagery may not be accurate to the final product.



Blog, Facebook, Twitter @CamelotFabrics
Pinterest, YouTube & Instagram @Camelot_Fabrics
camelotfabrics.com • camelotfabricsblog.com
Toll-Free: 1-800-361-4120 • 514-382-2400
info@camelotfabrics.com • www.camelotfabrics.com

Finished Quilt Size: 64-1/2" x 64-1/2"

OTHER TOOLS & SUPPLIES

2 yards extra-wide quilt batting (at least 68" wide)

Rotary cutter, cutting mat, rulers, straight pins, sewing machine, fabric maker, and threads to match your fabrics

NOTES

- For best results read through all the instructions before starting.
- Please wash, dry & iron your fabric before beginning, and trim selvages.
- Unless otherwise directed, sew all seams with an accurate 1/4" allowance and the fabrics' Right Sides together, and press seams open as you go.
- WOF = Width of Fabric
- FQ = Fat Quarter
- HST = Half Square Triangle

CUTTING

From each FQ: Cut (3) 5" x 22" strips - sub-cut (12) 5" squares.

Fabric A Fabric B Fabric C Fabric D Fabric E Fabric F Fabric G Fabric H Fabric I Fabric J

Fabric K

Cut (5) 4-1/2" x WOF strips - join end-to-end.

Sub-cut:

- (2) 4-1/2" x 12-1/2" rectangles,
- (2) 4-1/2" x 16-1/2" rectangles,
- (2) 4-1/2" x 28-1/2" rectangles,
- (2) 4-1/2" x 32-1/2" rectangles.

Fabric L

Cut (2) 12-1/2" x WOF strips - join end-to-end.

Sub-cut:

- (1) 12-1/2" square,
- (2) 12-1/2" x 28-1/2" rectangles.

Cut (1) 28-1/2" square.

Fabric M (Binding)

Cut (7) 2-1/2" x WOF strips.

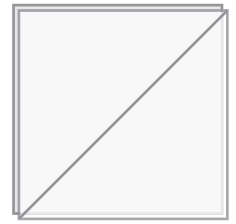
Backing

Cut (2) 2 yard x WOF rectangles.

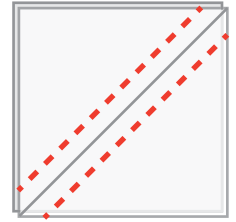


HST BLOCKS

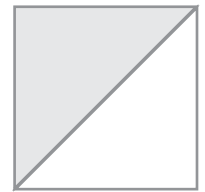
1. Pair up your 5" Fabrics A-J squares - you'll have (56) pairs. Draw a diagonal line from corner to corner on one square of each pair as shown, on the Wrong Side of the fabric.



2. Sew each pair of squares together with (2) lines of stitching, 1/4" from either side of the diagonal line.



3. Cut the unit into (2) HST units along the drawn line and open them up. Each pair of 5" squares will yield (2) slightly over-sized HST units. Trim the units down to 4-1/2" square.

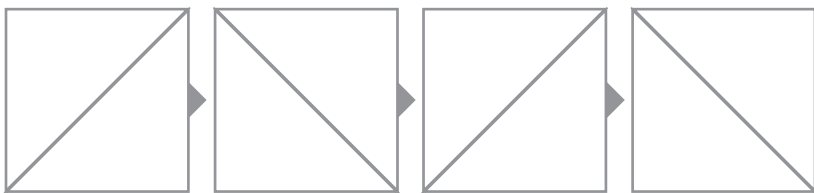


Make (112) in various combinations.

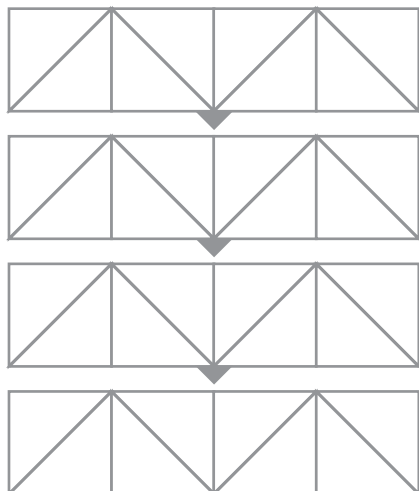
Tip: Before stitching your 5" squares together, play with their pairings to make sure you like the variety in your pairs.

ROW ASSEMBLY

1. Sew (16) of your HST units together in (4) rows of (4) units, alternating the direction of the central seams.

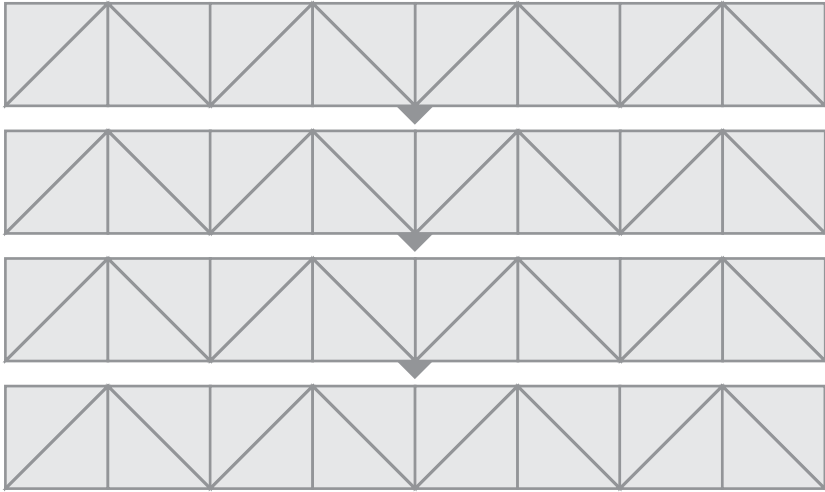


Make (4) in various combinations.

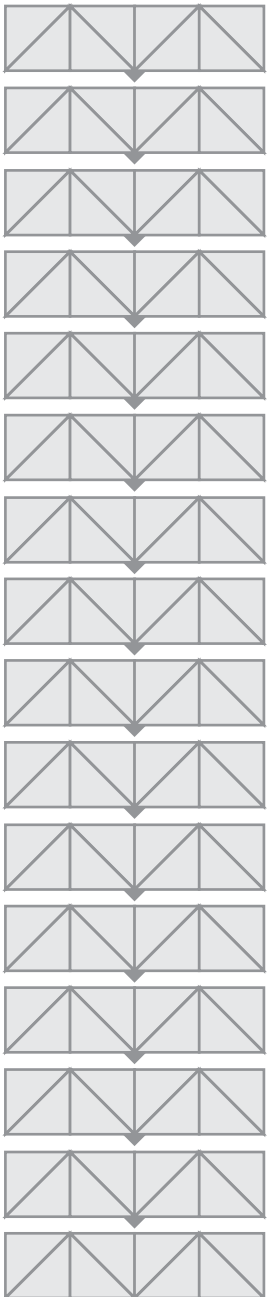


2. Sew the rows together in groups of (4) to make a 16-square panel as shown.

3. Sew (32) of your HST units together in (4) rows of (8) units, alternating the direction of the central seams. Sew these rows together into a 32-square panel.



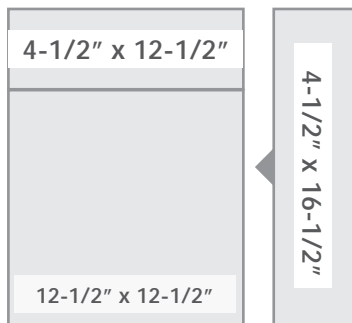
4. Sew (64) of your HST units together in (16) rows of (4) units. Sew these rows together into a 64-square panel.



MAKING THE BORDERS



1. Sew a $4\text{-}1/2'' \times 12\text{-}1/2''$ Fabric K rectangle to the top edge of a $12\text{-}1/2''$ Fabric L square.

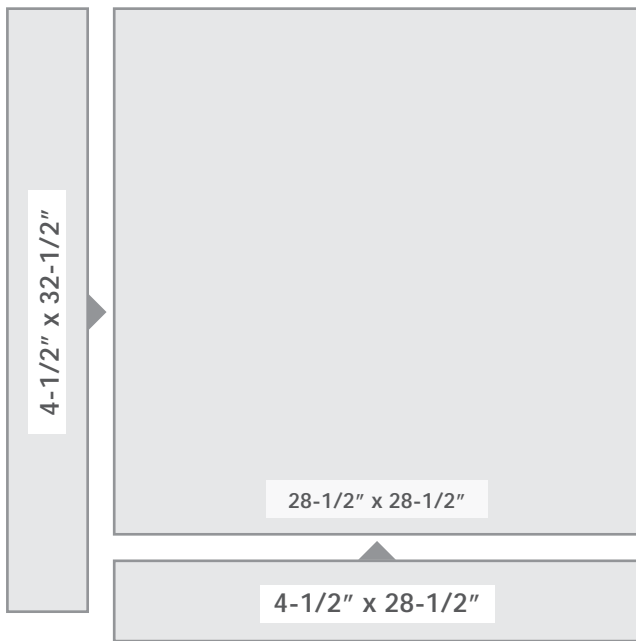


2. Sew a $4\text{-}1/2'' \times 16\text{-}1/2''$ Fabric K rectangle to the right-hand side of this K-L unit to complete the Bottom Left Border Block.



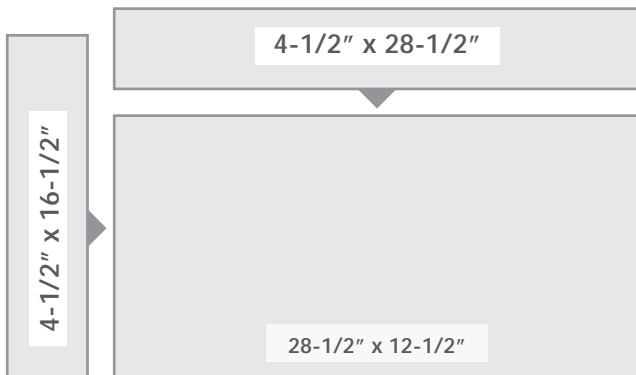
3. Sew a $4\text{-}1/2'' \times 12\text{-}1/2''$ Fabric K rectangle and a $4\text{-}1/2'' \times 32\text{-}1/2''$ Fabric K rectangle to the bottom & right-hand edges of a $12\text{-}1/2'' \times 28\text{-}1/2''$ Fabric L rectangle as shown.

This completes the Top-Left Border Block.



4. Sew a 4-1/2" x 28-1/2" Fabric K rectangle and a 4-1/2" x 32-1/2" Fabric K rectangle to the bottom & left-hand edges of a 28-1/2" Fabric L square as shown.

This completes the Top-Right Border Block.



5. Sew a 4-1/2" x 28-1/2" Fabric K rectangle and a 4-1/2" x 16-1/2" Fabric K rectangle to the top & left-hand edges of a 28-1/2" x 12-1/2" Fabric L rectangle as shown.

This completes the Bottom-Right Border Block.

FINISHING THE QUILT

Refer to the Assembly Layout on the following page for this section.

1. Sew the Top-Left and Bottom-Left Border Blocks to the top & bottom edges of your 16-square HST panel.
2. Sew the Top-Right and Bottom-Right Border Blocks to the top & bottom edges of your 32-square HST panel.
3. Sew the columns formed in Steps 1-2 to the left-hand & right-hand edges of your 64-square HST panel.
4. Join the (2) Backing rectangles along their 2-yard edges.
5. Layer the quilt top, batting & backing. Baste & quilt as desired.
6. Join the (7) Fabric M strips end-to-end and use them to bind your quilt.

ASSEMBLY LAYOUT

