

Box Trot Quilt (Q-003)



Exclusive Quilt Design by Chris Hoover of Whirligig Designs for Camelot Fabrics
Fabric collection: Mama & Me by Andrea Turk of Cinnamon Joe Studio for Camelot Fabrics
The direction of the fabrics in the digital imagery may not be accurate to the final product.



Blog, Facebook, Twitter @CamelotFabrics
Pinterest, YouTube & Instagram @Camelot_Fabrics
camelotfabrics.com • camelotfabricsblog.com
Toll-Free: 1-800-361-4120 • 514-382-2400
info@camelotfabrics.com • www.camelotfabrics.com

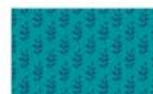
Fabric requirements



Fabric A:
214-0001 White
7/8 yard



Fabric B:
214-0085 Carbon
3/8 yard



Fabric C
9140605 #1
1/4 yard



Fabric D
9140603 #1
1/4 yard



Fabric E
9140601 #2
1/4 yard



Fabric F
9140601 #3
1/4 yard



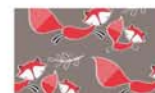
Fabric G
9140603 #2
1/4 yard



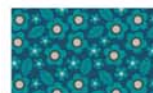
Fabric H
9140602 #1
1/4 yard



Fabric I
9140604 #3
1/4 yard



Fabric J
9140602 #2
1/4 yard



Fabric K
9140604 #1
1/4 yard



Fabric L
9140602 #3
1/4 yard



Fabric M (Binding)
9140601 #3
3/8 yard



Fabric N
9140604 #2
1/4 yard



Fabric O (Backing)
9140605 #3
2-7/8 yards

Finished Quilt Size: 44" x 51"

Other Tools & Supplies

- Rotary Cutter, Mat, Rulers, Straight Pins, Sewing machine, and threads to match your fabrics.
- 1-1/3 yards of quilt batting (58" wide)

General Instructions:

For best results, read all directions before beginning.
Use an accurate 1/4" seam allowance for all sewing.
WOF = width of fabric.

Cutting

Fabric A:

Cut 13 – 2" strips WOF for sashing.
From 10 strips, cut 10 – 2" x 41 1/2" rectangles.

Fabric B:

Cut 12 – 1" strips WOF.
From strips, cut 26 – 1" x 6 1/2" rectangles, 46 – 1" x 4 1/2" rectangles and 20 – 1" x 3 1/2" rectangles.

Fabric C, Fabric E, Fabric F, Fabric H and Fabric J:

From each fabric, cut 1 – 4 1/2" strip WOF.
From each strip, cut 2 – 4 1/2" x 13 1/2" rectangles and 1 – 4 1/2" x 7 1/2" rectangle. You will have extras.

Fabric D:

Cut 1 – 4 1/2" strip WOF.
From strip, cut 2 – 4 1/2" x 13 1/2" rectangles.

Fabric G and Fabric I:

From each fabric, cut 1 – 4 1/2" strip WOF.
From each strip, cut 1 – 4 1/2" x 13 1/2" rectangle and 2 – 4 1/2" x 7 1/2" rectangles. You will have extras.

Fabric K:

Cut 1 – 3 1/2" strip WOF.
From strip, cut 4 – 3 1/2" squares and 3 – 3 1/2" x 6 1/2" rectangles.

Fabric L:

Cut 1 – 3 1/2" strip WOF.
From strip, cut 6 – 3 1/2" squares and 2 – 3 1/2" x 6 1/2" rectangles.

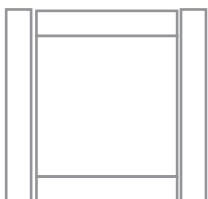
Fabric M:

Cut 5 – 2 1/4" strips WOF for binding.

Fabric N:

Cut 2 – 3 1/2" strips WOF.
From strips, cut 8 – 3 1/2" x 6 1/2" rectangles.

Piecing:



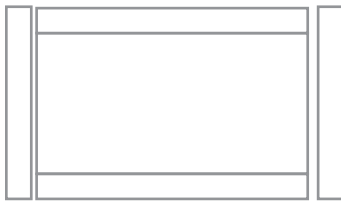
Fabric K - Make (4)
Fabric L - Make (6)

1. For 3 1/2" Fabric K and Fabric L squares:

Sew two 1" x 3 1/2" Fabric B rectangles to opposite sides of a Fabric K square. Sew two 1" x 4 1/2" Fabric B rectangles to the remaining two sides of the Fabric K square; Make 4. Repeat process for Fabric L squares; Make 6.

2. For 3 ½" x 6 ½" Fabric K, Fabric L and Fabric N rectangles:

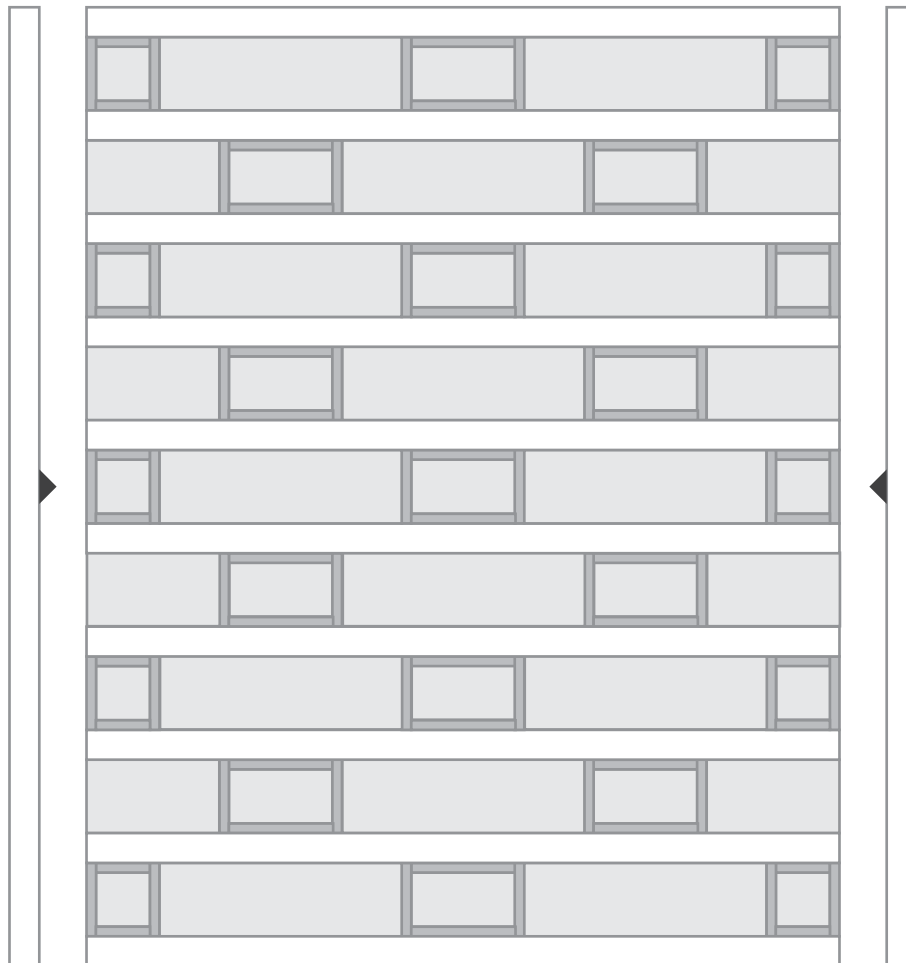
Sew two 1" x 6 ½" Fabric B rectangles to the top and bottom of the fabric K rectangle. Sew two 1" x 4 ½" Fabric C rectangles to the remaining two sides of the fabric K rectangle; Make 3. Repeat process for Fabric L rectangles; Make 2. Repeat process for Fabric N rectangles; Make 8.



Fabric K - Make (3)
Fabric L - Make (2)
Fabric N - Make (8)

Putting it all together:

1. Arrange squares and rectangles from last 2 steps, 4 ½" x 7 ½" and 4 ½" x 13 ½" assorted rectangles and 10 – 2" x 41 ½" Fabric A rectangles, referring to the quilt illustration on Page 1. Sew together in rows. Sew rows and Sashing strips together, top-to-bottom, as shown below.



2. Sew remaining 3 – 2" Fabric A strips together end to end. Cut 2 – 2" x 51 ½" rectangles and sew to sides of quilt center.

3. Cut Fabric O (backing) into two equal lengths (approximately 51 ¾") and seam together along the selvedge. Layer quilt top with batting and backing. Baste and quilt as desired, and bind with 2 ¼" Fabric M strips.