

Frightful & Delightful



Tote

Skill Level: Beginner

A Free Project Sheet From

 **Henry Glass & Co., Inc.**



facebook

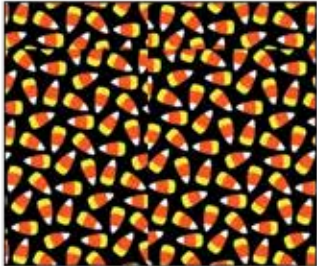
Finished Tote Size: 14" x 10" x 3"
49 West 37th Street, New York, NY 10018
tel: 212-686-5194 fax: 212-532-3525
Toll Free: 800-294-9495
www.henryglassfabrics.com

FRIGHTFUL & DELIGHTFUL

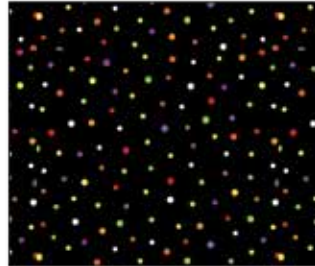
Finished Tote Size: 14" x 10" x 3"

Tote

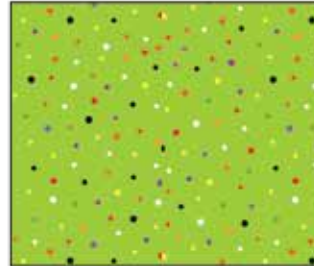
Fabrics in the Collection



Candy Corn - Black
9904G-99



Dots - Black
9903G-99



Dots - Green
9903G-66



Dots - Orange
9903G-33



Spiders - Black
9902G-99



Spiders - Orange
9902G-33



Pumpkins - Black
9901G-99



Halloween Squares - Black
9900G-99



Halloween Squares - Orange
9900G-33



Halloween Words - Black
9899G-99



Halloween Words - Purple
9899G-55



Skeletons - Black
9898G-99



Stripe - Black
9897G-99



Panel - Black
9896PG-99

Select Fabrics from Folio



Folio - Black
7755-99



Folio - Lime Green
7755-69



Folio - Orange
7755-36

Materials

½ yard	Stripe - Black (A)	9897G-99
⅛ yard	Pumpkins - Black (B)	9901G-99
⅛ yard	Candy Corn - Black (C)	9904G-99
⅛ yard	Dots - Orange (D)	9903G-33
⅛ yard	Halloween Words - Black (E)	9899G-99
½ yard	Dots - Green (F)	9903G-66
⅓ yard	Dots - Black (G)	9903G-99

Tote Cutting Instructions

Please note: all strips are cut across the width of fabric (WOF) from selvage to selvage unless otherwise noted.

From the Stripe - Black (A):

- Fussy cut (2) 6 ½" x 13 ½" house stripes, cutting the stripe ¼" from the top and 2" from the bottom of the houses.

From the Pumpkins - Black (B), cut:

- (1) 2" x WOF strip. Sub-cut (4) 2" x 10" strips.

From the Candy Corn - Black (C), cut:

- (1) 2 ½" x WOF strip. Sub-cut (4) 2 ½" x 10" strips.

From the Dots - Orange (D), cut:

- (1) 2 ½" x WOF strip. Sub-cut (4) 2 ½" x 10" strips.

From the Halloween Words - Black (E), cut:

- (1) 2 ½" x WOF strip. Sub-cut (2) 2 ½" x 10" strips.

From the Dots - Green (F), cut:

- (1) 13 ½" x WOF strip. Sub-cut (2) 13 ½" x 14 ½" strips.

From the Pumpkins - Black (G), cut:

- (2) 4" x WOF strips

Sewing Instructions

1. Follow Figure 1 to sew together (2) 2" x 10" Fabric B strips, (2) 2 ½" x 10" Fabric C strips, (2) 2 ½" x 10" Fabric D strips and (1) 2 ½" x 10" Fabric E strip together to make the bag front top. Sew one 6 ½" x 13 ½" Fabric A strip to the bottom of the bag front (Fig. 1). Repeat to make the bag back.

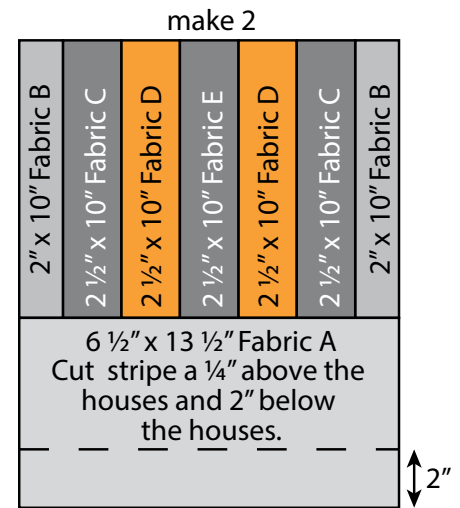


Fig. 1

2. Place the bag front and bag back right sides together. Stitch down the two short sides and across the bottom.
3. Measure in from the side edge 1 ½" and up from the bottom edge 1 ½" at each bottom corner. Cut out the square of fabric (Fig. 2). Open the cut bottom and align the bottom edge with the side edge and sew the two edges together (Fig. 3). Repeat with the other bottom corner to make the box bottom.

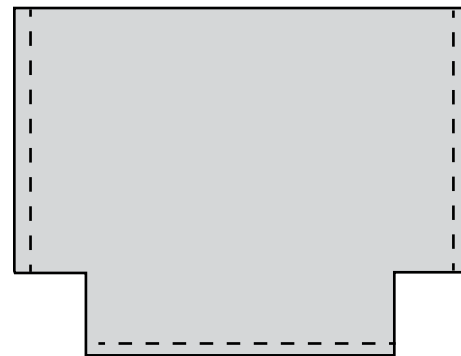


Fig. 2

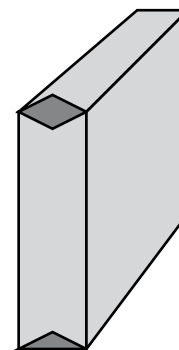


Fig. 3

4. Place the two Fabric F lining pieces right sides together. Stitch down the two short sides and across the bottom, leaving a 4" opening for turning.

5. Repeat Step 3 to the sewn lining to make the box bottom.

6. To make the handles, fold one 4" x WOF Fabric G strip in half lengthwise and press (Fig. 4). Open the folded fabric and fold each long edge to the creased centerline and press (Fig. 5). Fold the pressed fabric in half again and press to make one 1" x WOF strip (Fig. 6). Top stitch down both long sides $\frac{1}{8}$ " in from the edge to make the handle strip (Fig. 7). Repeat to make a second handle.

Note the strip will be $\frac{1}{4}$ of the width of strip you start with.

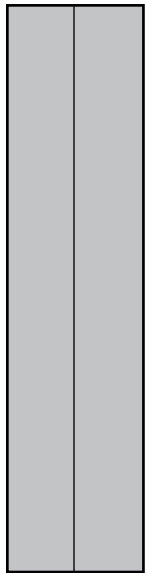


Fig. 4

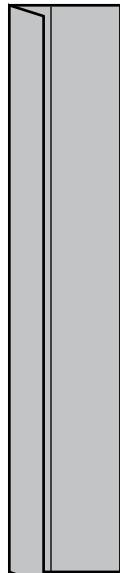


Fig. 5

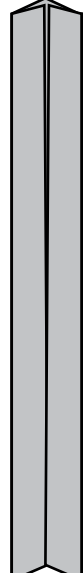


Fig. 6



Fig. 7

7. Cut the handle strips to desired length to make two bag handles.

8. Pin one handle to the front of the bag measuring 2" in from each side edge (Fig. 8). Repeat with the second handle and bag back. Make sure the handles are hanging down the right side of the bag while assembling.

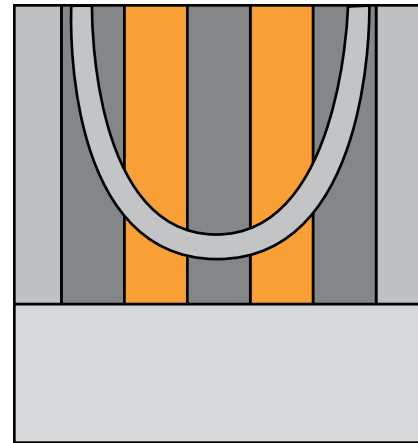


Fig. 8

9. Place the bag with handles, right sides together with the lining, aligning the top raw edges of the bag, handles and lining and pin together. Sew the lining and bag together, reinforcing the stitching at each handle end. Turn the bag and lining right side out through the opening in the lining. Press as needed and top stitch the opening closed. Put the lining into the bag, aligning the sides and bottom.