

# Hexagon Pinwheels

Quilt is 70" x 89".

## Supplies

### Blocks

12 assorted Fat Quarters\*

**Background:** 21/2 yards

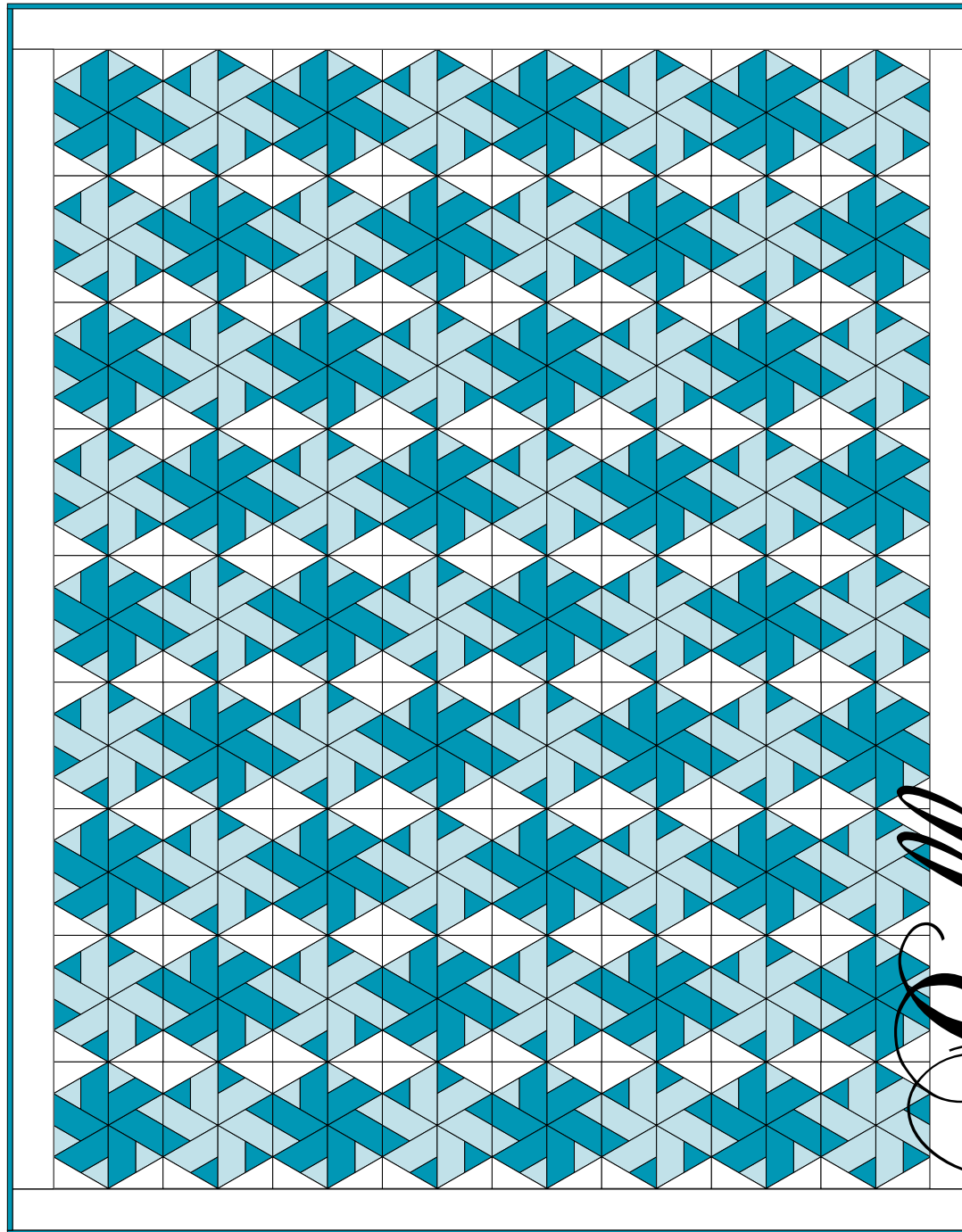
**Binding:** 3/4 yard

**Backing:** 5 1/2 yards

60° degree ruler

template plastic

\*Fat Quarter=18" x 22"



Hexagon  
Pinwheels  
Quilt is 70" x 89".

12 pack

*Which colors will you choose?*

*moda*  
**Bella**  
**Solids™**



*moda*

MODAFABRICS.COM

BSPK1500 — SUGGESTED RETAIL \$6.00

# Hexagon Pinwheels

## Cutting

Make a template for B using template plastic and the pattern at left.

## Blocks

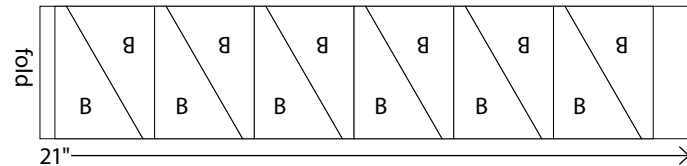
From EACH of the 12 Fat Quarters cut:  
6-2½" x 21" strips

## Background

12-4½" x width of fabric strips

Fold the strips in half, wrong sides together.

From each strip cut 24 B templates.



Cut 144.



Cut 144.

*moda*

## Binding

8-2½" x width of fabric strips.

Sew the strips end to end to make the binding.

## Construction

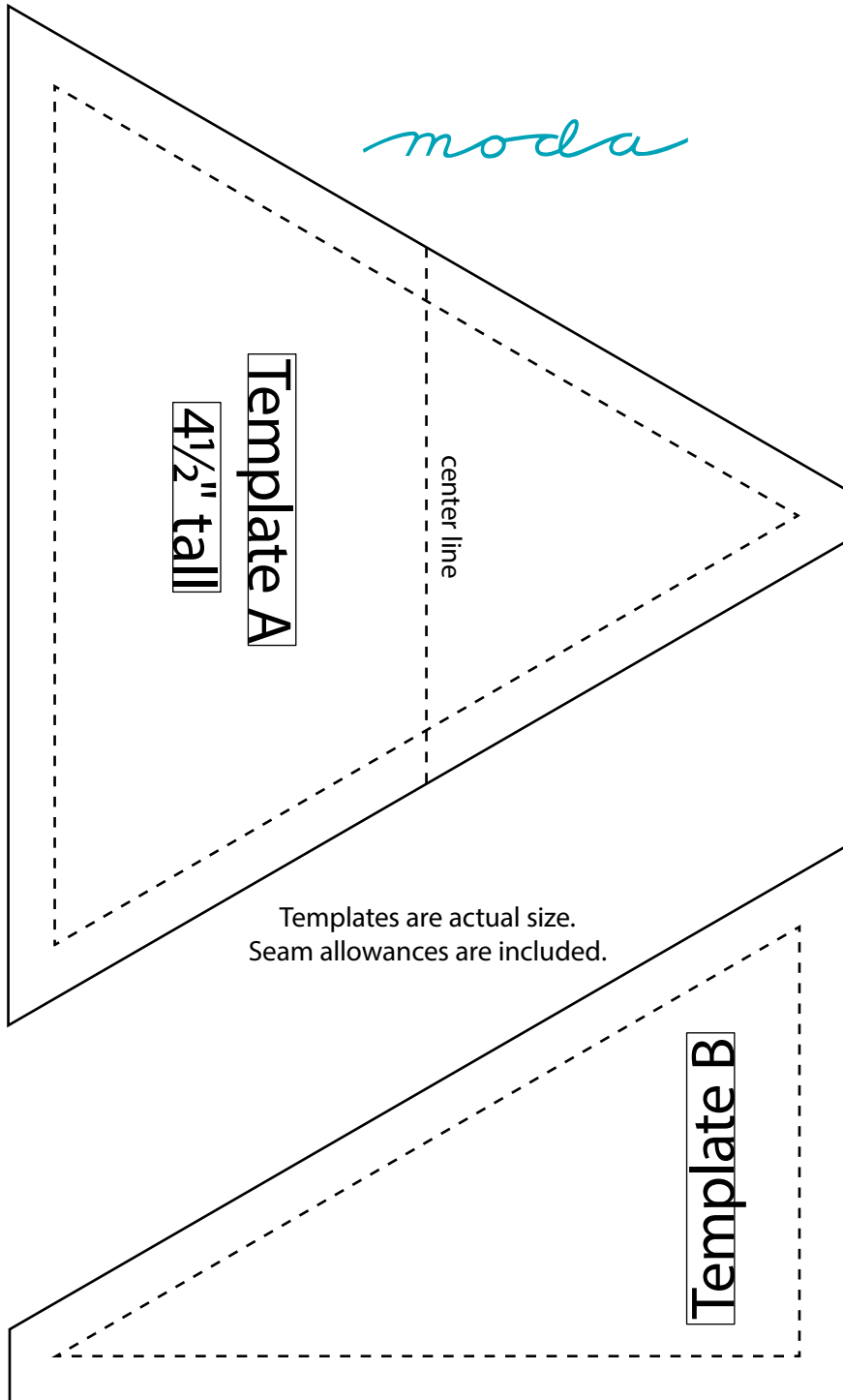
Use ¼" seams. Press in the direction of the arrows in the diagrams.

### 1 Make two 60 degree pinwheel blocks

(A) Sew 2 solid 2½" x 21" strips together. Make 2 matching strip sets.



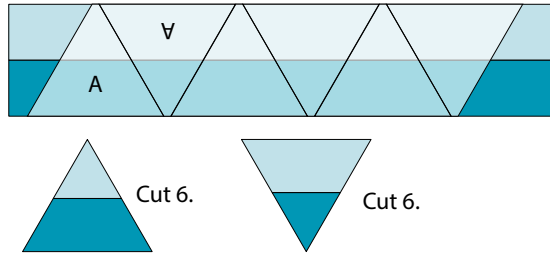
Make 2 matching strip sets.



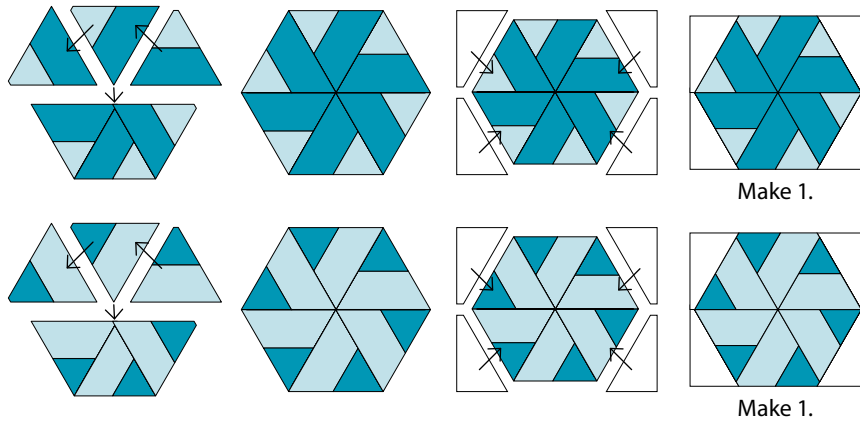
*moda*

Step 1 continued.

- (B) Align the  $4\frac{1}{2}$ " line on a  $60^\circ$  ruler or align template A with the bottom edge of the strip set. Cut. Rotate the ruler, cut. Continue rotating the ruler and cutting the triangles. Cut 6 triangles from each strip set. Cut 12 triangles from the 2 strip sets.

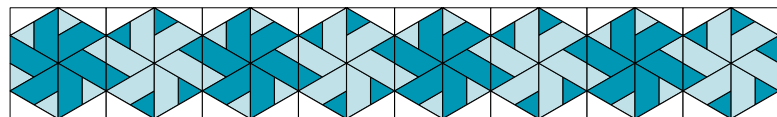


- (C) Select 6 matching triangles and sew 3 triangles together to make half of the pinwheel as shown. Make 2. Join the halves to make the pinwheel. Add background triangles to four sides to complete the block. Repeat with the second set of matching triangles.



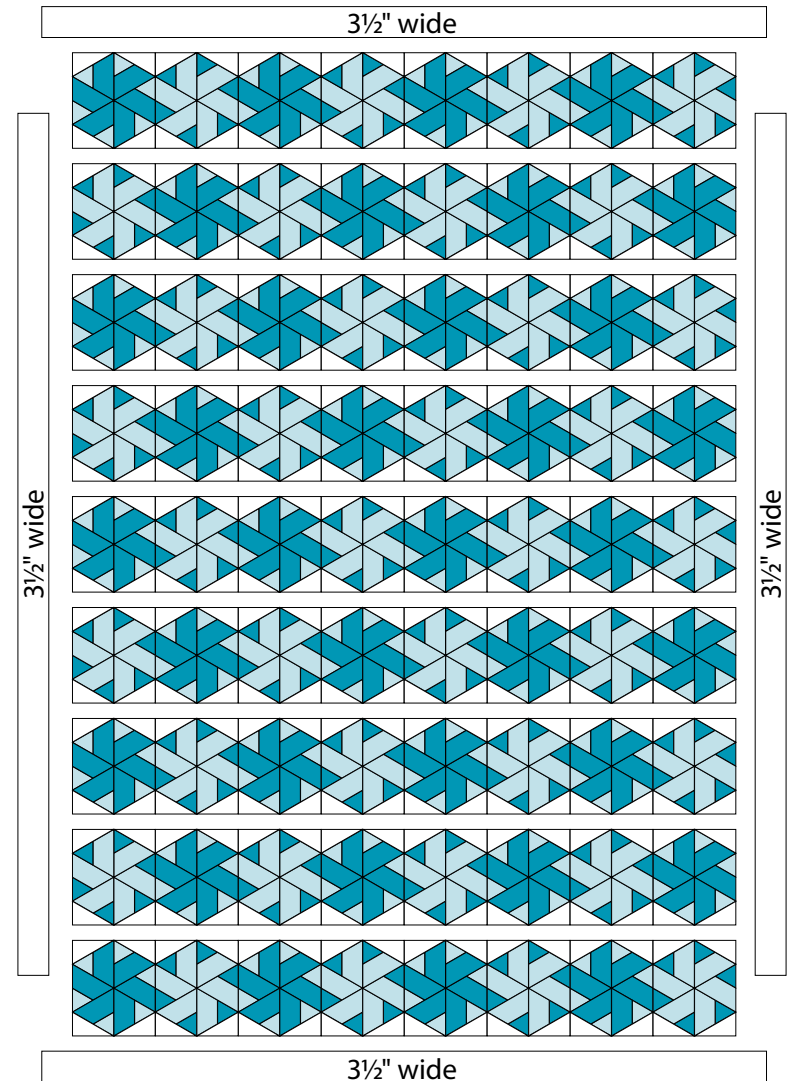
- (D) Repeat to make a total of 72 pinwheel blocks.

- 2 Join 8 blocks to make 1 row. Make 9 rows.  
Tip: Wait until you arrange the rows, then press in opposite directions from row to row.



Make 9 rows.

- 3 Join the 9 rows. Measure the length of the quilt top through the center to determine the length to cut the side borders. Add the borders to the sides of the quilt. Measure the width of the quilt top through the center to determine the length to cut the top and bottom borders. Add the borders to the top and bottom of the quilt. Layer, quilt and bind.



moda