

2 Sizes

moda

Lizzie's Legacy 1850-1880
Betsy Chutchian

Pattern includes directions for both a large and a mini quilt.



Finished Size: 89"x89"

Finished Size: 30"x30"



To plant a garden is to believe in tomorrow.

Lizzie's Legacy 1850-1880

Betsy Chutchian

Finished Size: 89"x89" Block Size: 9"x9"

Quilters Basics

Read instructions before beginning a project.

All instructions include a 1/4" seam allowance.

Press as you go. Press seams in one direction.

22" measurement is approximate.

LOF = Length of Fabric



Fabric Requirements:

1- Fat Quarter Bundle (31510AB)

Fabric 1 - (31510-16) Sashing & Borders - 4 1/4 yds.

Fabric 2 - (31518-19) Binding - 3/4 yd.

Backing - 8 yards

Cutting

For ease of piecing sort pieces by size and color as they are cut.

From the fat quarter bundle select 20 dark prints (Yes, pink is considered a dark. No solids or stripes.) and 11 light prints or solids (creams & golds only)

From each of 20 Dark fat quarters

Cut 3 - 3 1/2" x 22" strips

Subcut 11 - 3 1/2" x 3 1/2" squares for 9-patch blocks and half blocks

Cut 1 - 5 1/2" x 22" strip

Subcut 1 - 5 1/2" x 5 1/2" square cut twice diagonally for half blocks and corner blocks.

Note: you will cut 80 triangles, but use 52.

From each of 11 Light fat quarters

Cut 4 - 3 1/2" x 22" strips

Subcut 20 - 3 1/2" x 3 1/2" squares for 9-patch blocks and half blocks *Save the extra squares.*

Fabric 1 - Sashings and Borders.

Set aside for later.

Fabric 2 - Binding

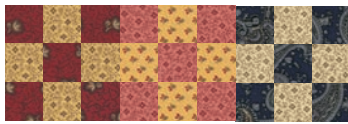
Cut 10 - 2 1/4" x WOF strips.

moda



To plant a garden is to believe in tomorrow.

Construction



How to Make a 9-Patch Block

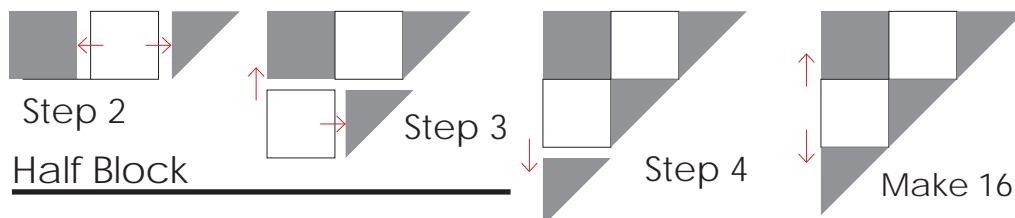
The following directions are for one 9-Patch block. Each block requires 5 matching dark squares and 4 matching light squares.

1. Select 5 matching 3½" dark squares and 4 matching 3½" light squares
2. Stitch a dark square on opposite sides of a light square. Press toward arrows. Make 2 rows.
3. Stitch a light square on opposite sides of a dark square. Press toward arrows. Make 1.
4. Join the rows. Press toward arrows. Block should measure 9½" x 9½" with seams.
5. Repeat Steps 1-4 to make 32 – 9-Patch blocks.

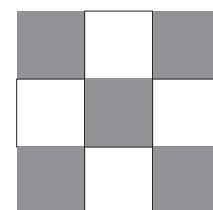
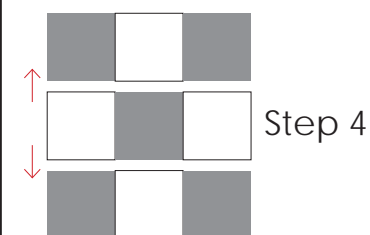
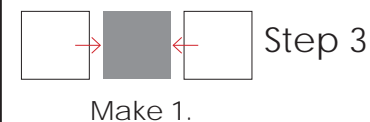
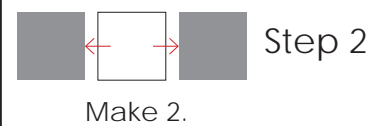
How to Make a Half Block

The following directions are for one half block. Each block requires 1 dark square, 2 matching light squares and 3 matching dark triangles.

1. Select 1–3½" dark square, 2 matching 3½" light squares and 3 matching dark triangles.
2. Stitch the dark square to the left side of a light square. Press toward arrows. Add a dark triangle to the opposite side of the light square.
3. Sew a dark triangle to the right side of the second light square. Press toward arrows.
4. Join the rows. Press toward arrows. Sew remaining dark triangle to bottom of stitched rows.
5. Repeat Steps 1-4 to make 16 – Half blocks.



9-Patch Block



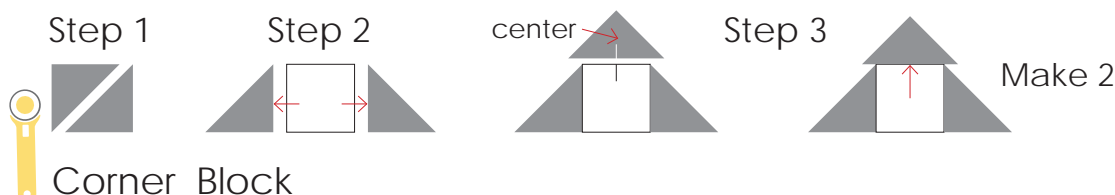
Make 32

Block should measure 9½" x 9½" with seams.

How to Make a Corner Block

Each Corner block requires 1 light square, 1 dark square and 2 matching dark triangles.

1. Cut the dark square once diagonally.
2. Stitch a dark triangle on opposite sides of the light square. Press toward arrows.
3. Center and stitch triangle from Step 1 to top stitched unit.
4. *Note: Step 1 triangle is oversized and will be trimmed before adding border.*
5. Repeat Steps 1-3 to make 2 – Corner blocks.



Corner Block

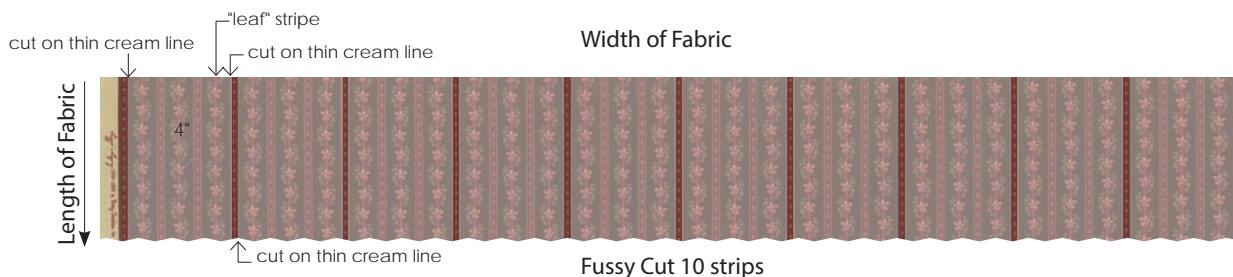
moda

Construction (cont.)

Preparing Outer Border and Sashings

Outer Border and Sashings for this quilt are fussy cut from the length of fabric.

1. Beginning with the red stripe next to the printed selvage edge of the fabric cut on the thin cream line to the right of the first red stripe. *See diagram.*
2. Move over three "leaf" stripes (approx. 4") and cut on the next thin cream line beyond the third "leaf" stripe.
3. Move across the red stripe and cut on the next thin cream line.
4. Repeat Steps 1, 2 & 3 to create ten (10) fussy cut border and sashing strips. Strips should measure approx. 4" x 153".



Cutting the Ten Strips into Borders and Sashings

*Refer to the information below to cut the various sashing and border lengths.
Sort pieces by size.*

Strips 1, 2, 3, and 4: From **each** strip cut 1– 4"x95" outer border strip and 5–4"x9½" short sashing strips.

Strip 5: Cut 1– 4"x116" center sashing strip.

Strips 6 and 7: From **each** strip cut 1– 4"x93" sashing strip and 5–4"x9½" short sashing strips.

Strip 8: Cut 2– 4"x68" sashing strips.

Strip 9: Cut 2– 4"x18" and 2– 4"x43" sashing strips.

Strip 10: Cut 15– 4"x9½" short sashing strips.



Assembly

This quilt is pieced on the diagonal. For best results we suggest that you arrange all of the 9-Patch and Half Blocks on a design wall or the floor before beginning to sew.

Pieces for each row.

Row 1: 1 Corner block

Row 2: 2 Half blocks, 2 short sashings strips and 1 – 9-Patch blocks

Row 3: 2 Half blocks, 4 short sashings strips and 3 – 9-Patch blocks

Row 4: 2 Half blocks, 6 short sashings strips and 5 – 9-Patch blocks

Row 5: 2 Half blocks, 8 short sashings strips and 7 – 9-Patch blocks

Row 6: 2 Half blocks, 8 short sashings strips and 7 – 9-Patch blocks

Row 7: 2 Half blocks, 6 short sashings strips and 5 – 9-Patch blocks

Row 8: 2 Half blocks, 4 short sashings strips and 3 – 9-Patch blocks

Row 9: 2 Half blocks, 2 short sashings strips and 1 – 9-Patch blocks

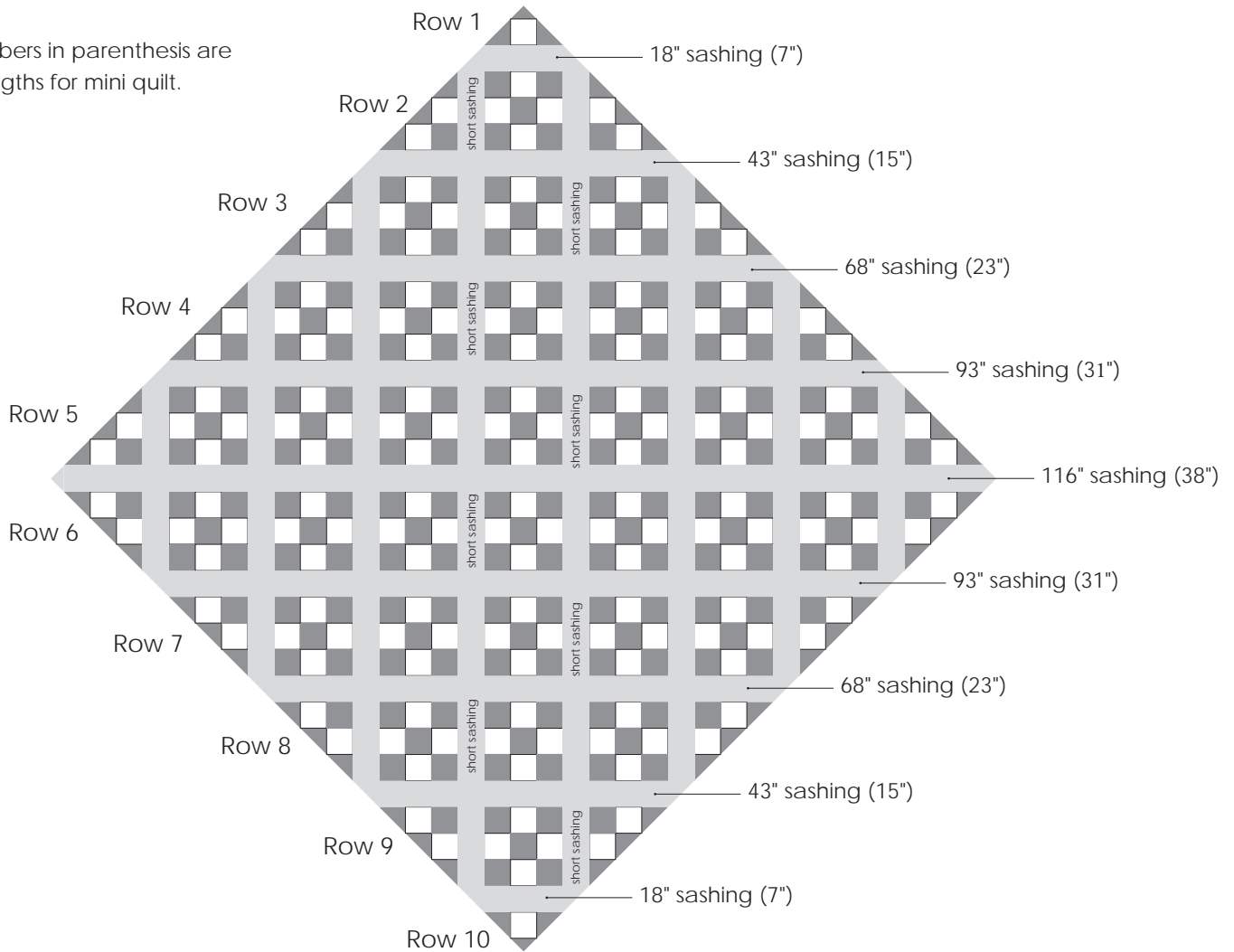
Row 10: 1 Corner block



Refer to the diagram on the next page to assemble each row. Press toward sashings.

Assembly (cont.)

Note: Numbers in parenthesis are sashing lengths for mini quilt.



Add Sashing between Pieced Rows

Note: All long sashings are slightly over sized and will be trimmed before adding outer borders.

1. Fold long sashing strip in half and pin or finger press to mark the center of the strip.
2. Find the center of pieced row. Match centers, align edges and stitch pieced row and sashing together. Press seam toward sashing.
3. Refer to the diagram above for the length of each sashing, follow Steps 1 & 2 to stitch remaining rows and sashings together. Press seams toward sashings.
4. Trim and square quilt top. Make sure to leave a $\frac{1}{4}$ " seam allowance.

Quilt top should measure $89\frac{1}{2}$ " x $89\frac{1}{2}$ " with seams.



Outer Border

Measure quilt top from top to bottom through the center. Cut 2 of the 95" border strips to that measurement.

Add prepared strips to opposite sides of quilt. Press seams toward border.

Measure quilt top from side to side through the center including the borders. Cut 2 remaining 95" borders to that measurement. Add prepared strips to top and bottom of quilt. Press seams toward border.

Quilt top should measure $89\frac{1}{2}$ "x $89\frac{1}{2}$ " with seams.

Finishing

1. Using a diagonal seam, join the $10-2\frac{1}{4}$ "xWOF strips end to end. Press seams open. Fold prepared strip in half wrong sides together and press to make the binding.
2. Layer, Quilt, and Bind

moda



Mini Quilt
Lizzie's Legacy 1850-1880
Betsy Chutchian

Finished Size: 30"x30" Block Size: 3"x3"

The fabric requirements and cutting directions for the Lizzie's Legacy mini are listed below. The piecing directions are the same for both the full size and mini quilt. Please follow the full size directions when stitching your mini.

Fabric Requirements for Mini:

1- LayerCake™ (31510LC)
Fabric 1 - (31510-16) Sashing & Borders - 1¼ yds.
Fabric 2 - (31518-19) Binding - ¼yd.
Backing - 1¼ yards



Cutting for Mini

For ease of piecing sort pieces by size and color as they are cut.

From the LayerCake™ select 20 dark prints (Yes, pink is considered a dark. No solids or stripes.) and 11 light prints or solids (creams & golds only)

From each of 20 Dark LayerCakes™

Cut 2 - 1½" x 10" strips

Subcut 11 - 1½" x 1½" squares for 9-patch blocks and half blocks. *Save the extra squares.*

Cut 1 - 2¾" x 2¾" square cut twice diagonally for half blocks and corner blocks. *Save the extra squares.*

From each of 11 Light LayerCakes™

Cut 4 - 1½" x 10" strips

Subcut 20 - 1½" x 1½" squares for 9-patch blocks and half blocks. *Save the extra squares.*

Fabric 1 - Sashings and Border

See cutting directions below.

Fabric 2 - Binding

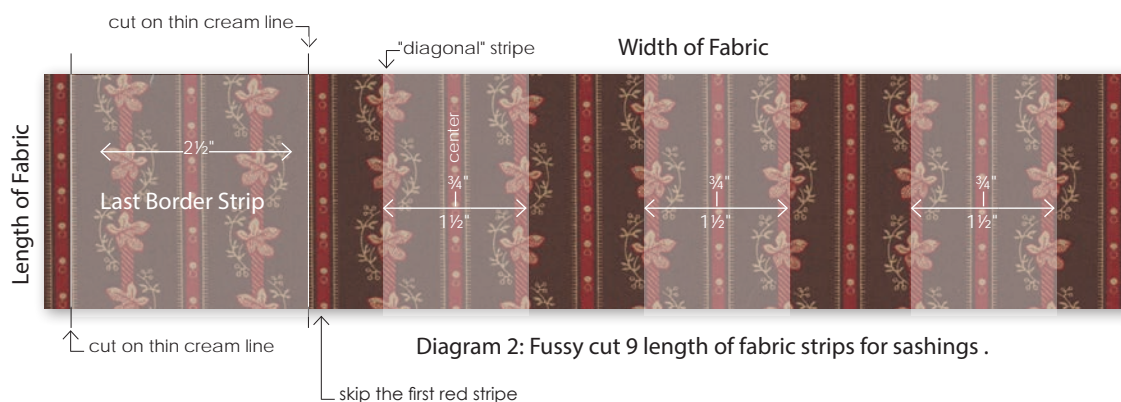
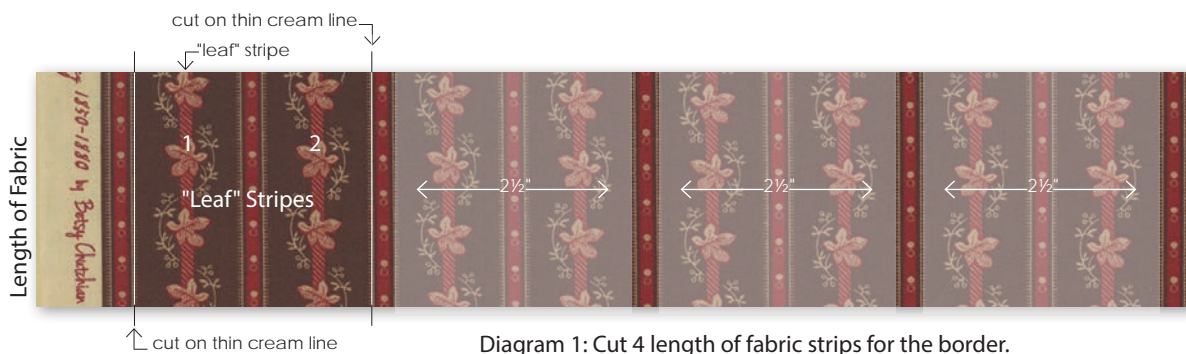
Cut 4 - 1⅝" x WOF strips for single fold binding

moda

Cutting Outer Border and Sashings for Mini

Outer Border and Sashings for this quilt are fussy cut from the length of fabric.

1. Cut Border strips first. Beginning with the red stripe next to the printed selvage edge of the fabric cut on the thin cream line to the right of the first red stripe. *See Diagram 1.*
 2. Move over two "leaf" stripes (approx. 2½") and cut on the next thin cream line beyond the second "leaf" stripe.
 3. Move across the red stripe and cut on the next thin cream line.
 4. Repeat Steps 1, 2 & 3 to create four (4) fussy cut border strips. Strips should measure approx. 2½" x 45".
1. Cut Sashings strips second. Use the remaining stripe fabric to cut length of fabric strips for the mini quilt sashings. Sashing strips are cut 1½" x length of fabric. *See Diagram 2.*
 2. Move to the second red stripe from the left edge of remaining fabric. Using a ruler place the ¾" mark in the center of the second red stripe. The edge of the ruler should be on the outer/left edge of the diagonal stripe which is in the center of the leaf stripe. Measure over 1½" and that mark should be on the outer/right edge of the stripe in the center of the next leaf stripe. Cut on the outer edges of the diagonal stripe in the center of the leaf stripe.
 3. Skip the next red stripe and center the ¾" mark in the center of the second red stripe. Repeat Step 2.
 4. Continue across the remaining fabric to cut a total of 9 – 2½" x 45" sashing strips.



Cut the 9 sashing strips as follows:

Strip 1: Cut 1 – 1½" x 38" sashing

Strips 2 and 3: From each, cut 1 – 1½" x 31" and 3 – 1½" x 3½" sashings

Strips 4 and 5: From each, cut 1 – 1½" x 23" and 5 – 1½" x 3½" sashings

Strips 6 and 7: From each, cut 1 – 1½" x 15" and 7 – 1½" x 3½" sashings

Strips 8 and 9: From each, cut 1 – 1½" x 7" and 5 – 1½" x 3½" sashings

moda