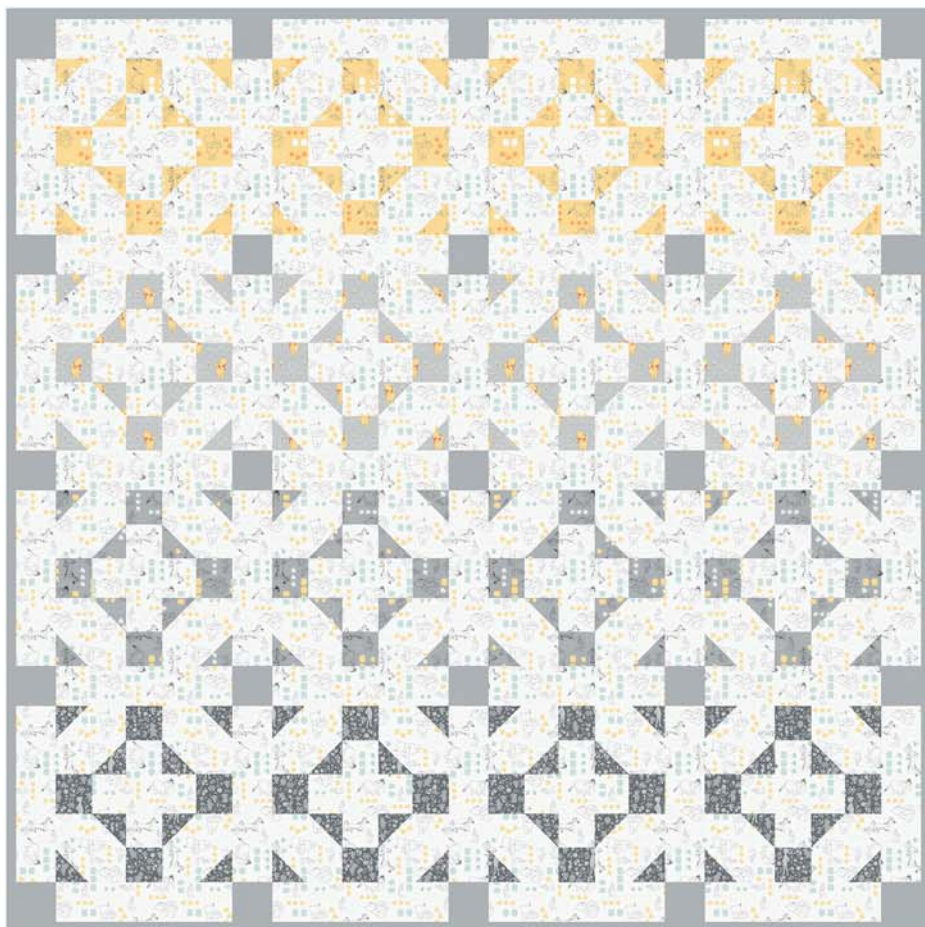




Disney
**Winnie
the Pooh**

Hang Time Quilt (Q-027B)



Fabric requirements



Fabric A
85430101 #2
4-1/2 yards



Fabric B (includes Binding)
214-0027 Stone
1 yard



Fabric C
85430101 #3
1/2 yard



Fabric D
85430105 #1
1/2 yard



Fabric E
85430101 #1
1/2 yard



Fabric F
85430104 #3
1/2 yard



Suggested Backing
85430102 #1
5 yards

Exclusive Quilt Design by Melissa Corry of Happy Quilting Designs for Camelot Fabrics
Fabric collection: Winnie the Pooh designs by Camelot Design Studio from Camelot Fabrics.
© Disney. Based on the "Winnie the Pooh" works by A.A. Milne and E.H. Shepard.
The direction of the fabrics in the digital imagery may not be accurate to the final product.



Blog, Facebook, Twitter @CamelotFabrics
Pinterest, YouTube & Instagram @Camelot_Fabrics
camelotfabrics.com • camelotfabricsblog.com
Toll-Free: 1-800-361-4120 • 514-382-2400
info@camelotfabrics.com • www.camelotfabrics.com

Finished Quilt Size: 75" x 75"

OTHER TOOLS & SUPPLIES

- 2-1/2 yards of extra wide quilt batting (at least 80" wide)
- sewing machine & coordinating thread
- rotary cutter & mat
- fabric shears
- straight edge ruler & measuring tape
- straight pins
- fabric marker or pencil

NOTES

- For best results, read through all instructions before beginning.
- WOF = width of fabric (42")
- RST = right sides together
- Unless otherwise directed, sew all seams with an accurate 1/4" seam allowance, and press seams open as you go.
- Please wash, dry & iron your fabric before beginning, and trim selvages.

CUTTING

Fabric A - Background

Cut (11) 6-1/2" x WOF strips - sub-cut (64) 6-1/2" squares.

Cut (7) 3-1/2" x WOF strips - sub-cut (32) 3-1/2" squares and (16) 3-1/2" x 9-1/2" rectangles.

Cut (4) 15-1/2" x WOF strips - sub-cut (40) 3-1/2" x 15-1/2" rectangles.

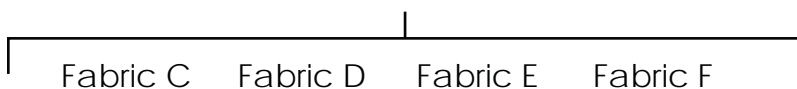
Fabric B - Sashing & Binding

Cut (3) 3-1/2" x WOF strips - sub-cut (25) 3-1/2" squares.

Cut (8) 2-1/2" x WOF strips for the Binding.

Fabrics C - F - Accent

Cut (4) 3-1/2" x WOF strips from each - sub-cut (48) 3-1/2" squares from each; (192) total.

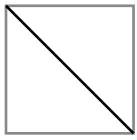


Backing

Cut (2) 90" x WOF rectangles.



MAKING THE BLOCKS

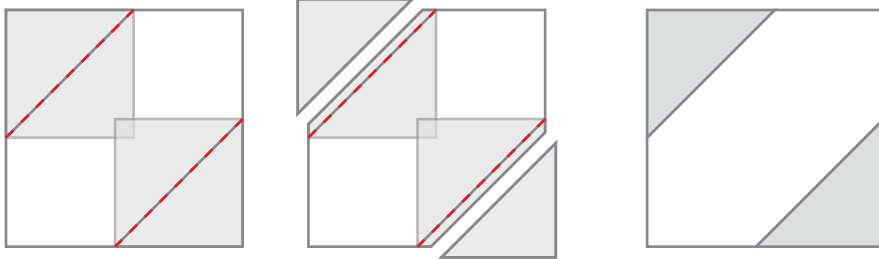


1. Draw a diagonal line through the center of (32) squares of each Accent fabric, on the Wrong Side as shown.

Make (32) from each Accent fabric.

2. Sew (2) matching squares to opposite corners of each 6-1/2" Background fabric square, RST, along their diagonal lines. Trim of the excess fabric, 1/4" from the seams as shown.

Make (16) with each Accent fabric - (64) units total.



3. Sew a 3-1/2" Accent fabric square to a 3-1/2" Background fabric square as shown, and press the seam toward the Accent fabric.

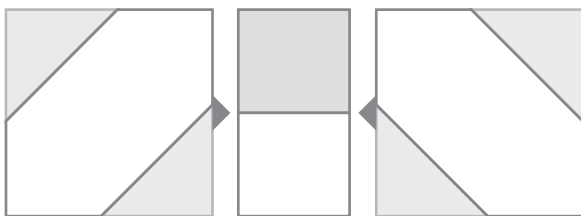


Make (8) with each Accent fabric - (32) units total.

4. Sew (2) matching Accent squares to the end of a 3-1/2" x 9-1/2" Background rectangle as shown, and press the seams toward the Accent fabric.

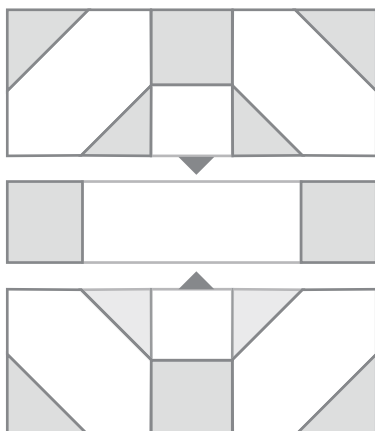


Make (4) with each Accent fabric - (16) units total.



5. Sew matching units from Steps 1 & 2 in rows as shown.

Make (8) with each Accent fabric - (32) units total.

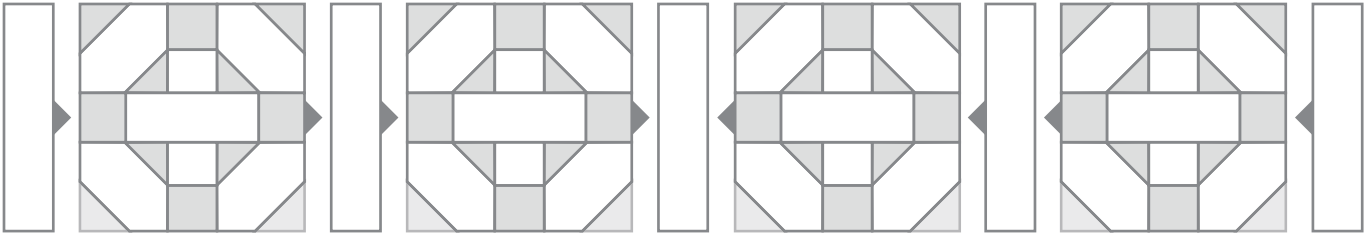


6. Sew matching rows from Step 5 together with a matching unit from Step 4, as shown, to complete the Blocks.

Make (4) with each Accent fabric - (16) Blocks total.

MAKING THE QUILT TOP

1. Sew the blocks together in matched rows of (4) as shown, with a 15-1/3" x 3-1/2" Background fabric rectangle on either side of each block.



Make (1) row featuring each Accent fabric - (4) rows total.

2. Sew (4) 15-1/2" x 3-1/2" Background fabric rectangles together in rows with (5) 3-1/2" Sashing fabric squares as shown.



Make (5) rows.

3. Sew the rows of blocks & sashing together top-to-bottom, referring to the quilt illustration on Page 1, to complete the quilt top.

FINISHING THE QUILT

1. Join the Binding fabric strips end-to-end and press to make the binding.
2. Join the Backing fabric rectangles along their 90" edges to make (1) 90" x 83" rectangle.
3. Layer the backing, batting & quilt top, with the fabrics' Right Sides facing outward. Baste & quilt as desired.
4. Trim excess batting & backing, and bind.