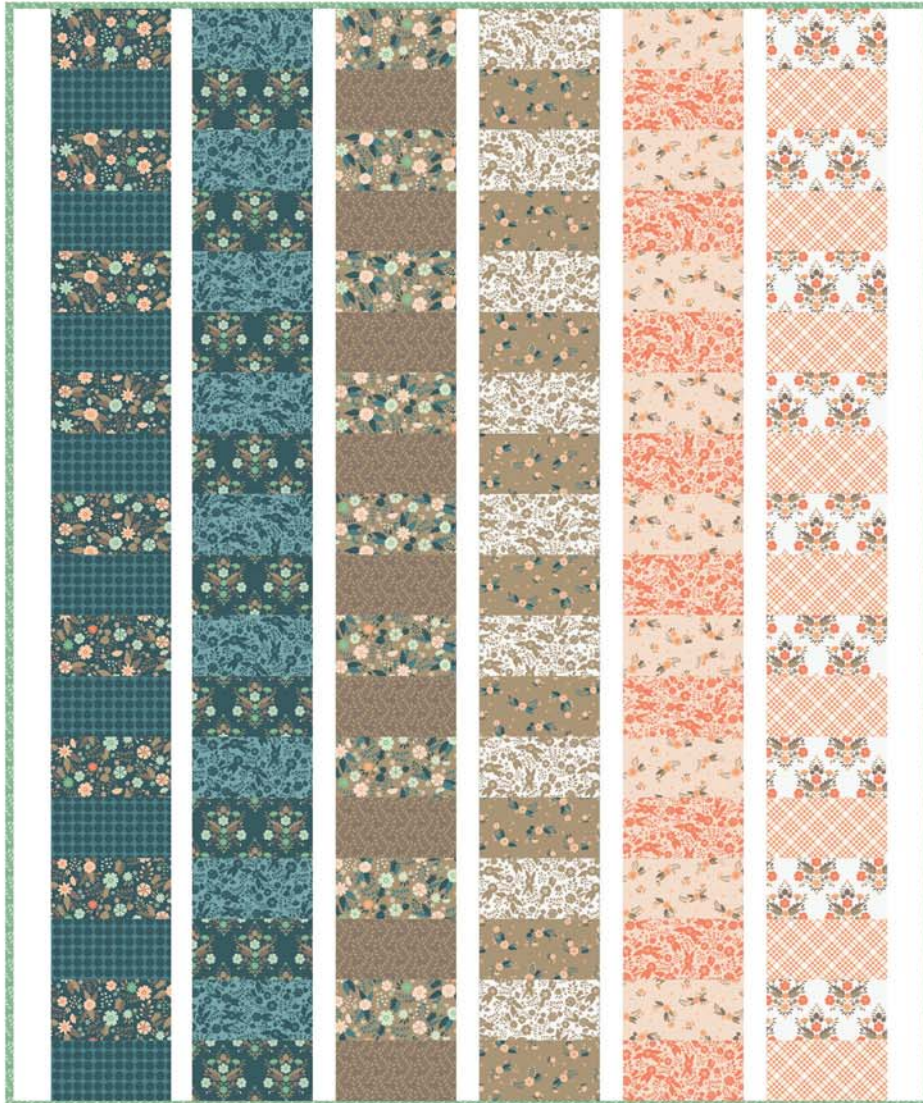




Farm Stand Quilt (Q-016B)



Fabric requirements



- 

Fabric A
214-0001 White
1-1/4 yards
- 

Fabric B
3240201 #2
1/2 yard
- 

Fabric C
3240206 #2
1/2 yard
- 

Fabric D
3240204 #2
1/2 yard
- 

Fabric E
3240202 #2
1/2 yard
- 

Fabric F
3240201 #3
1/2 yard
- 

Fabric G
3240207 #1
1/2 yard
- 

Fabric H
3240204 #3
1/2 yard
- 

Fabric I
3240205 #3
1/2 yard
- 

Fabric J
3240204 #1
1/2 yard
- 

Fabric K
3240204 #1
1/2 yard
- 

Fabric L
3240202 #1
1/2 yard
- 

Fabric M
3240203 #1
1/2 yard
- 

Fabric N (binding)
3240207 #3
1/2 yard
- 

Suggested Backing
3240203 #3
4 yards

Exclusive Quilt Design by Anne Sullivan of Play Crafts for Camelot Fabrics
 Fabric collection: Flourish by Ciana Bodini for Camelot Fabrics
 The direction of the fabrics in the digital imagery may not be accurate to the final product.



Blog, Facebook, Twitter @CamelotFabrics
 Pinterest, YouTube & Instagram @Camelot_Fabrics
 camelotfabrics.com • camelotfabricsblog.com
 Toll-Free: 1-800-361-4120 • 514-382-2400
 info@camelotfabrics.com • www.camelotfabrics.com

Finished Quilt Size: 60" x 72"

OTHER TOOLS & SUPPLIES

- Rotary cutter & mat
- Sewing machine & coordinating thread
- Iron & pressing surface
- Pencil
- 2 yds of extra-wide quilt batting (at least 76" wide)

NOTES

Please wash, dry & iron your fabric before beginning, and trim selvages.
For best results, read all directions before beginning.
Use a scant 1/4" seam allowance for all sewing.
WOF = width of fabric.

CUTTING

Fabric A

Cut (10) 2-1/2" x WOF strips for sashing.

Cut (4) 4-1/2" x WOF strips for borders.

Fabrics B through M

Cut (3) 4-1/2" x WOF strips.

Backing

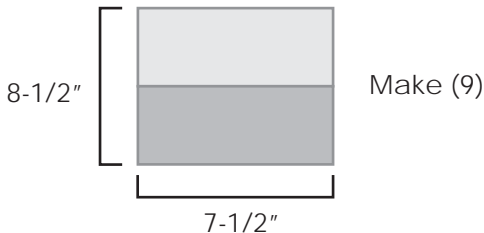
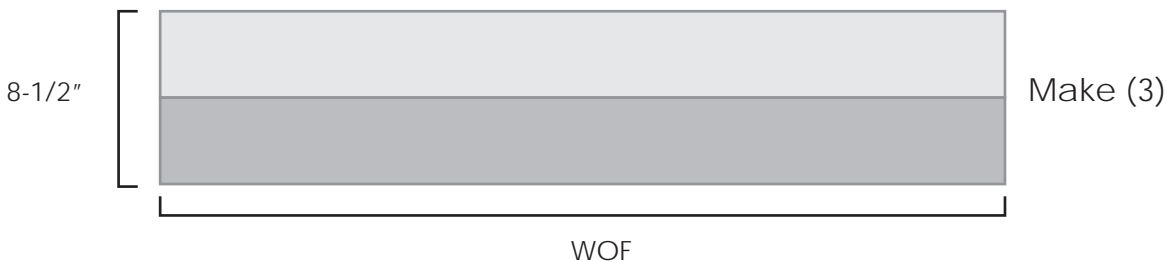
Cut (2) 2yd x WOF rectangles.

Binding

Cut (7) 2-1/2" x WOF strips.

STRIPES

1. Sew your Fabric B - C strips together as shown to make (3) WOF x 8-1/2" units.



2. Cut (3) 7-1/2" x 12-1/2" units from each set of (2) strips - (9) units total.

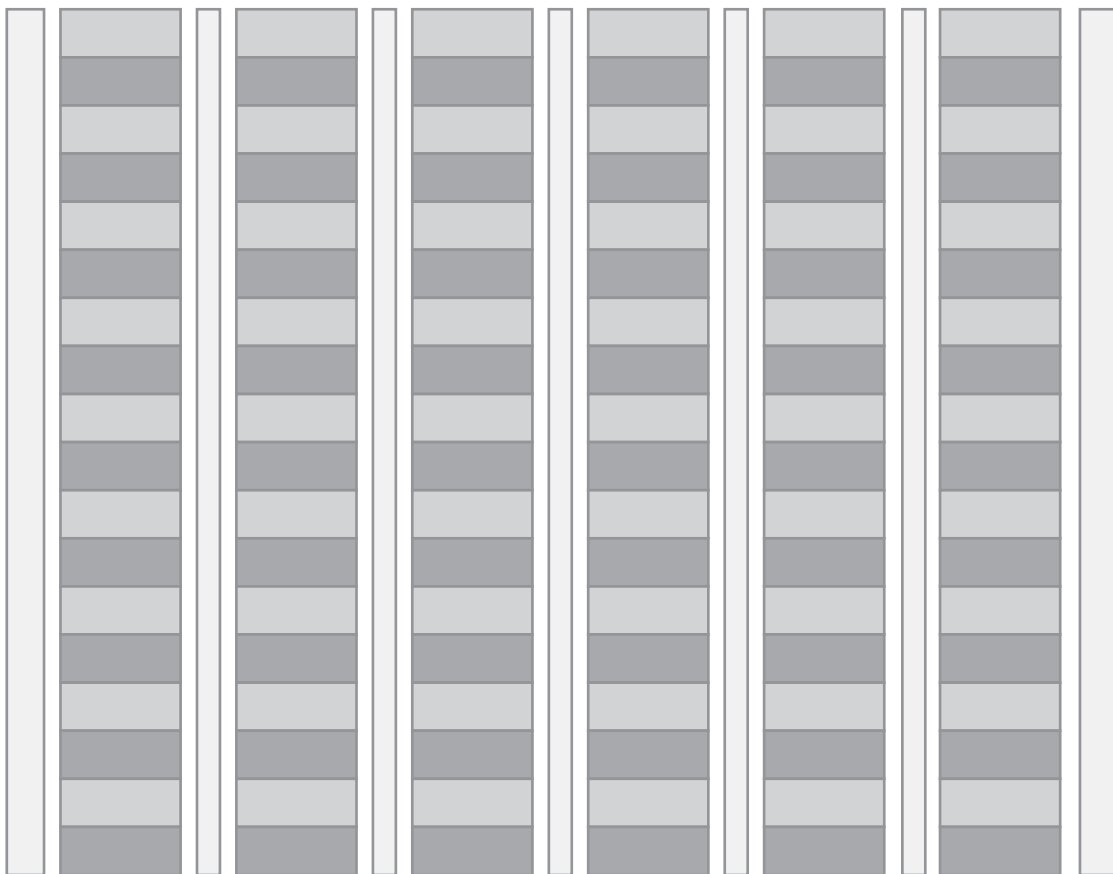
3. Sew the (9) units together top-to-bottom to make a 7-1/2" x 72-1/2" column - this completes Stripe #1.



4. Make the remaining stripes in the same way as Stripe #1, using the following combinations:
Stripe #2 - Fabrics D, E
Stripe #3 - Fabrics F, G
Stripe #4 - Fabrics H, I
Stripe #5 - Fabrics J, K
Stripe #6 - Fabrics L, M

SASHING & BORDERS

9. Sew your (10) Fabric A 2-1/2" x WOF strips together in pairs, end to end, to make (5) Sashing strips. Trim these strips to 2-1/2" x 72-1/2".
10. Sew your (4) Fabric A 4-1/2" x WOF strips together in pairs, end to end, to make (2) Border strips. Trim these strips to 4-1/2" x 72-1/2".
11. Sew the Stripes and Sashing together as shown, with a Border strip on either side.



FINISHING THE QUILT

1. Sew the Backing rectangles together along the 2yd edges to make (1) 86" x 72" Backing piece.
2. Join the Binding strips end-to-end and press into double-fold binding.
3. Layer the Backing, batting and quilt front, with the fabrics' Right Sides facing outward. Baste and quilt as desired, and bind the edges with the Binding strip.