

CORNER OAK STREET

Designed by Cherry Guidry



This quaint pattern uses sweet pinks, teals, blues and greens combined with an adorable house block to create a cute friendly neighborhood right in the quilt. A perfect gift for the new home owner.

CONT

Uses Contempo's
Sunday Ride collection by Cherry Guidry
Finished Size: 69" x 76"



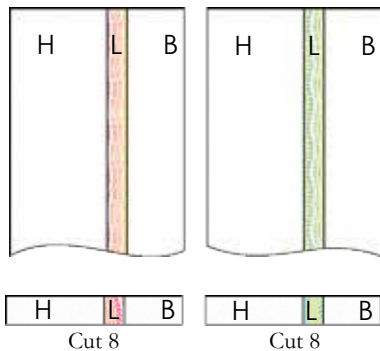
CORNER OAK STREET 69" x 76"

- Cutting instructions are based on fabric that is at least 40" wide.
- WOF = Width Of Fabric folded selvage to selvage.
- All seam allowances are 1/4".
- Press fabric before cutting.
- Cut and label all your pieces.

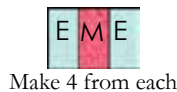
FABRIC	CUT
WHITE 10087-09	(20) 1 1/2" x WOF strips, sub-cut into: (16) 1 1/2" x 12 1/2" - A (40) 1 1/2" x 12 1/2" - Sashing strips (1) 7" x WOF strip, sub-cut into (2) 7" x 20" strips - H (1) 4 1/2" x WOF strips, sub-cut into (2) 4 1/2" x 20" strips - B (3) 3 1/2" x WOF, sub-cut into: (16) 3 1/2" x 3 1/2" - C (16) 3 1/2" x 3 1/2" - G
LT TEAL 10087-54	(2) 3 1/2" x WOF strips, sub-cut into: (8) 3 1/2" x 6 1/2" - K (4) 2 1/2" x WOF strips, sub-cut into: (8) 2 1/2" x 6 1/2" - F (16) 2 1/2" x 4 1/2" - E (6) 1 1/2" x WOF strips - Borders 1 & 2
LT GRAY 10087-08	(2) 3 1/2" x WOF strips, sub-cut into: (8) 3 1/2" x 6 1/2" - K (4) 2 1/2" x WOF strips, sub-cut into: (8) 2 1/2" x 6 1/2" - F (16) 2 1/2" x 4 1/2" - E
DK PINK 10087-26	(1) 3 1/2" x WOF strip, sub-cut into: (4) 3 1/2" x 6 1/2" - J (4) 3 1/2" x 3 1/2" - I (1) 2 1/2" x WOF strip, sub-cut into: (4) 2 1/2" x 4 1/2" - M (8) 2 1/4" x WOF - Binding
DK TEAL 10087-84	(1) 3 1/2" x WOF strip, sub-cut into: (4) 3 1/2" x 6 1/2" - J (4) 3 1/2" x 3 1/2" - I (1) 2 1/2" x WOF strip, sub-cut into: (4) 2 1/2" x 4 1/2" - M
DK GRAY 10087-11	(1) 3 1/2" x WOF strip, sub-cut into: (4) 3 1/2" x 6 1/2" - J (4) 3 1/2" x 3 1/2" - I (1) 2 1/2" x WOF strip, sub-cut into: (4) 2 1/2" x 4 1/2" - M
GREEN 10087-40	(1) 3 1/2" x WOF strip, sub-cut into: (4) 3 1/2" x 6 1/2" - J (4) 3 1/2" x 3 1/2" - I (1) 2 1/2" x WOF strip, sub-cut into: (4) 2 1/2" x 4 1/2" - M (2) 1 1/2" x WOF, sub-cut into: (25) 1 1/2" x 1 1/2" - Cornerstones (7) 2 1/2" x WOF - Borders 3 & 4
PINK STRIPE 10088-26	(1) 2" x 20" strip - L (1) 6 1/2" x 6 1/2" - D
TEAL STRIPE 10088-54	(1) 2" x 20" strip - L (1) 6 1/2" x 6 1/2" - D
FAT EIGHTHS 10081-09 10083-54 10081-40 10086-54 10082-40 10086-26 10084-09 10085-26 10084-54 10085-09 10083-09	<i>From 11 fat eighths cut:</i> (1) 6 1/2" x 6 1/2" - D Cut (1) more 6 1/2" x 6 1/2" from (2) of the fat eighths <i>From (10) fat eighths cut:</i> (2) 6" x 5 1/2" - Pieced border
SERENDIPITY 10082-09	(8) 5 1/2" x WOF Borders 5 & 6 strips (1) 6 1/2" x 6 1/2" - D

CORNER OAK STREET

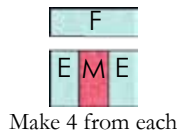
- Sew a white 7" x 20" H strip onto the left edge of a pink stripe 2" x 20" L strip; sew a white 4½" x 20" B strip to the right edge of the pink stripe. Repeat with the teal stripe 2" x 20" L strip.
- Cut each of these strip sets into (8) 2½" x 12½" units.



- Sew a lt teal 2½" x 4½" E strip to the right and left edges of a dk pink 2½" x 4½" M strip; sew a total of (4) lt teal/dk pink EME units.



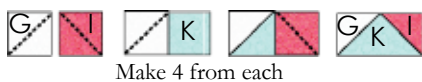
- Repeat Step 3 with the lt teal E and the green M strips; the lt gray E and the dk gray M; the lt gray E and the dk teal M. Make a total of (4) EME units from each color combination.
- Sew a lt teal 2½" x 6½" F strip onto the top edge of the EME Unit. Repeat with each EME unit and its corresponding F fabric.



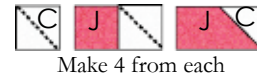
- Sew a 6½" x 6½" D square onto the right edge of the pieced EME/F unit. Repeat with the remaining (15) 6½" x 6½" D squares and the remaining (15) EME/F units.



- Draw a diagonal line onto the wrong side of all the white 3½" x 3½" C & G squares and the dk pink 3½" x 3½" I squares.
- Following the diagram below, place a white 3½" x 3½" G square onto the left side of a lt teal 3½" x 6½" K strip and sew on the traced line. Trim the excess fabric, leaving a ¼" seam allowance and press the fabric towards the left corner. Follow these steps to sew the dk pink 3½" x 3½" I square onto the right side of the lt teal 3½" x 6½" K strip.



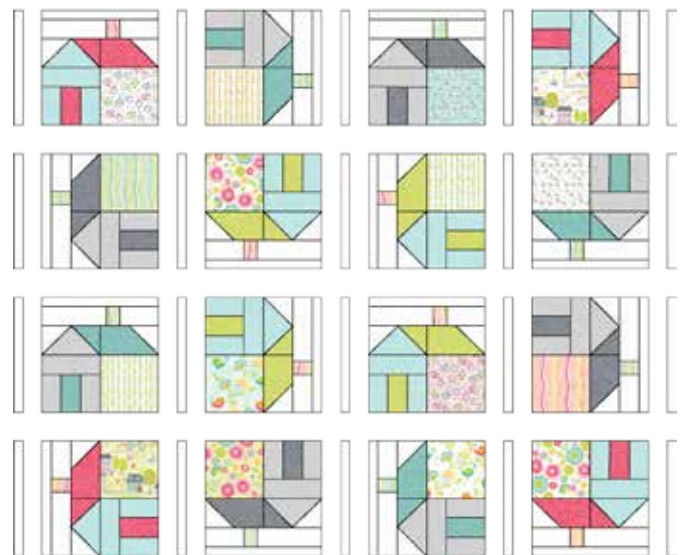
- Make a total of (4) GK I units from each of the following:
 - white/lt teal/dk pink
 - white/lt teal/green
 - white/lt gray/dk teal
 - white/lt gray/dk gray
- Repeat the previous steps to sew a white 3½" x 3½" C square onto the right side of a dk pink 3½" x 6½" J strip; make (4) each with the dk pink, green, dk teal, and dk gray J strips.



- Following the diagram below, construct (16) houses:



- Arrange the houses as indicated in the diagram below and sew the white 1½" x 12½" sashing strips onto the left edge of each house block; sew a sashing strip onto the right edge of the last house on each row.



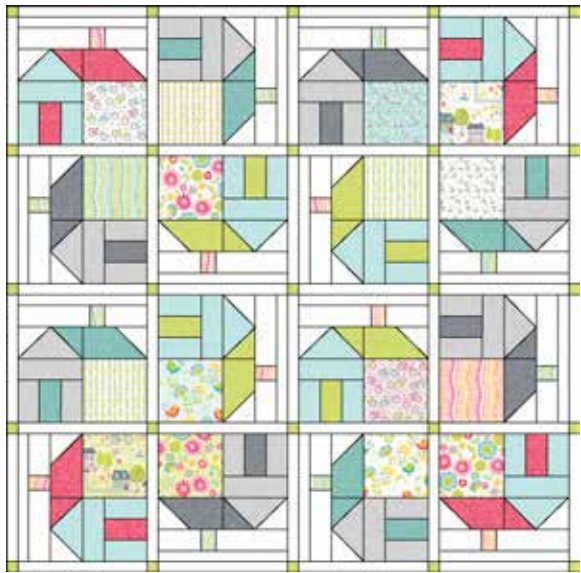
- Sew (5) green 1½" x 1½" cornerstones and (4) white 1½" x 12½" sashing strips as follows:



- Make a total of (5) sashing rows.

CORNER OAK STREET

15. Assemble the rows together to make the quilt center:



16. Sew (10) 6" x 5½" pieced border squares along the 5½" edge; repeat for a total of (2) pieced borders.



17. Sew (3) 1½" x WOF borders 1 & 2 strips, end to end, and cut into (2) 1½" x 53½" border 1 strips; sew onto the left and right edges of the quilt center.

18. Sew the remaining (3) 1½" x WOF borders 1 & 2 strips, end to end, and cut into (2) 1½" x 55½" border 2 strips; sew onto the top and bottom of the quilt center.

19. Sew the pieced border strips to the top and bottom edges of the quilt center.

20. Sew (4) green 2½" x WOF borders 3 & 4 strips, end to end, and cut into (2) 2½" x 66½" border 3 strips; sew onto the left and right edges.

21. Sew the remaining (3) green 2½" x WOF borders 3 & 4 strips, end to end, and cut into (2) 2½" x 59½" border 4 strips; sew onto the top and bottom edges of the quilt.

22. Sew (2) Serendipity 5½" x WOF Borders 5 & 6 strips, end to end; repeat with the remaining strips. From the sewn strips, cut (2) 5½" x 69½" border 5 strips and sew onto the left and right edges of the quilt center.

23. Cut the remaining sewn strips into (2) 5½" x 69½" border 6 strips and sew onto the top and bottom edges of the quilt center.

24. Quilt as desired and bind with the (8) 2¼" x WOF binding strips.



Corner Oak Street

a Free Pattern



Yardage



10081-09 Serendipity White/Multi - 1 Fat Eighth



10081-40 Serendipity Green/Multi - 1 Fat Eighth



10082-40 Serendipity Green/Multi - 1 Fat Eighth



10082-09 Serendipity White/Multi - 2 yds



10084-09 Country Birds Whit/Multi - 1 Fat Eighth



10084-54 Country Birds Lt Teal/Multi - 1 Fat Eighth



10083-09 Sunday Sail Whit/Multi - 1 Fat Eighth



10083-54 Sunday Sail Med Teal - 1 Fat Eighth



10087-84 Beaded Circles Dk Teal - 5/8 yd



10087-08 Beaded Circles Lt Gray - 5/8 yd



10087-09 Beaded Circles Cloud - 2 1/2 yds



10086-54 Rosey Posey Blue - 1 Fat Eighth



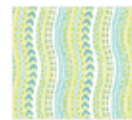
10086-26 Rosey Posey Pink - 1 Fat Eighth



10085-26 Sunday Ride Pink - 1 Fat Eighth



10085-09 Sunday Ride Whit/Multi - 1 Fat Eighth



10088-54 Sunday Stripe Teal - 1 Fat Quarter



10088-26 Sunday Stripe Pink - 1 Fat Quarter



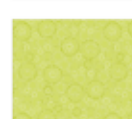
10087-54 Beaded Circles Lt Teal - 3/4 yd



10087-26 Beaded Circles Dk Pink - 1 1/4 yd



10087-11 Beaded Circles Dk Gray - 5/8 yd



10087-40 Beaded Circles Green - 7/8 yd



10084-09 Country Birds Whit/Multi - 5 yds
(Backing)