

Sunday Stars

by Kim Diehl



Finished Quilt Size: 36½" x 36½"
A Free Project Sheet from

 Henry Glass & Co., Inc.



49 West 37th Street, New York, NY 10018
tel: 212-686-5194 • fax: 212-532-3525
Toll-free: 800-294-9495
www.henryglassfabrics.com

 facebook

Sunday Stars

Finished quilt size: 36½" x 36½" • Finished block size: 4" x 4"

MATERIALS

1 fat eighth (9" x 22") *each* of 25 assorted prints (6508-30, 77, 88; 6509-30, 66; 6510-33, 88, 99; 6511-66, 88; 6512-33, 77, 88; 6513-33, 66, 99; 6514-11, 40, 55; 6515-55, 66, 77; 6516-11, 40, 88) for blocks and binding
1 fat eighth *each* of 4 assorted neutral prints (6509-44; 6511-44; 6514-44; 6515-44) for blocks
1¼ yards of fabric of your choice for backing (Kim suggests neutral paisley print 6511-44)
45" x 45" square of batting
Standard quilting supplies

CUTTING

Please cut all pieces across the width of the fabric in the order given unless otherwise noted. For added versatility when stitching the patchwork units in this scrappy quilt, consider cutting a handful of extra pieces for each of the items specified below.

From *each* of the 25 assorted prints, cut:

1 strip, 2½" x 22"; crosscut into:
1 square, 2½" x 2½" (combined total of 25)
8 squares, 1½" x 1½" (combined total of 200)

Keep the pieces organized by print. Reserve the remainder of the assorted prints.

From the reserved assorted prints, cut a *combined total* of:

56 squares, 5¼" x 5¼"; cut each square in half diagonally *once* to yield two triangles (combined total of 112)
Enough 2½"-wide random lengths to make a 156" length of binding when joined end to end.

From the 4 assorted neutral prints, cut a *combined total* of:

100 rectangles, 1½" x 2½"
100 squares, 1½" x 1½"

PIECING THE STAR BLOCKS

Sew all pieces with right sides together using a ¼" seam allowance unless otherwise noted.

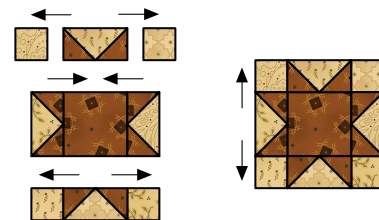
- 1 Use a pencil and an acrylic ruler to draw a diagonal sewing line from corner to corner on the wrong side of each assorted print 1½" square.
- 2 From the assorted neutral prints, randomly choose four 1½" x 2½" rectangles. Using one group of matching assorted print pieces (one 2½" square and four marked 1½" squares), layer a prepared assorted print 1½" square onto one end of a neutral rectangle. Stitch the

pair together on the drawn diagonal line. Fold the resulting inner triangle open, aligning the corner with the corner of the neutral print rectangle to keep it square; press. Trim away the excess layers beneath the top triangle, leaving a ¼" seam allowance. In the same manner, layer, stitch, press, and trim a second prepared square onto the remaining end of the neutral rectangle to form a mirror-image point. Repeat for a total of four pieced flying-geese star-point units measuring 1½" x 2½", including the seam allowance.



Make 4.

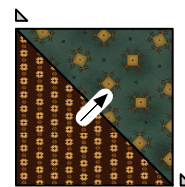
- 3 Referring to the illustration, lay out the four matching pieced flying-geese star-point units, the matching 2½" assorted print square, and four assorted neutral print 1½" squares in three horizontal rows to form a Star block. Join the pieces in each row. Press the seam allowances away from the star-point units. Join the rows. Press the seam allowances away from the middle row. The block should measure 4½" square, including the seam allowances.



- 4 Repeat steps 2 and 3 for a total of 25 pieced Star blocks.

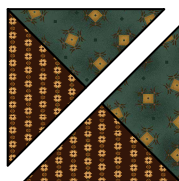
PIECING THE HOURGLASS BLOCKS

- 1 Choose two different assorted print triangles. Join the pair along the long diagonal edges. Press the seam allowances to one side. Trim away the dog-ear points. Repeat for a total of 56 pieced half-square-triangle units.



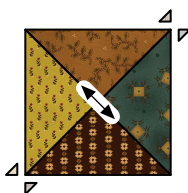
Make 56.

- Use a rotary cutter and an acrylic ruler to cut each pieced half-square-triangle unit in half diagonally through the center seam to make two pieced triangles, for a combined total of 112 pieced triangles.



Make 112.

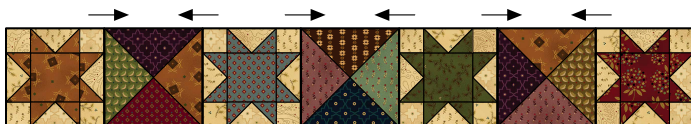
- Join two pieced triangles from step 2 as shown. Press the seam allowances open. Trim away the dog-ear points. Repeat for a total of 56 pieced Hourglass blocks measuring $4\frac{1}{2}$ " square, including the seam allowances.



Make 56.

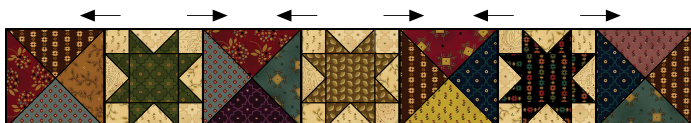
PIECING THE QUILT CENTER

- Lay out four pieced Star blocks and three pieced Hourglass blocks end to end in alternating positions. Join the blocks. Press the seam allowances toward the Hourglass blocks. Repeat for a total of four pieced A rows measuring $4\frac{1}{2}$ " x $28\frac{1}{2}$ ", including the seam allowances.



Row A.
Make 4.

- Lay out four pieced Hourglass blocks and three pieced Star blocks end to end in alternating positions. Join the blocks. Press the seam allowances toward the Hourglass blocks. Repeat for a total of three pieced B rows measuring $4\frac{1}{2}$ " x $28\frac{1}{2}$ ", including the seam allowances. Reserve the remaining Hourglass blocks.



Row B.
Make 3.

- Lay out the A and B rows in alternating positions. Join the rows. Press the seam allowances open. The pieced quilt center should now measure $28\frac{1}{2}$ " square, including the seam allowances.



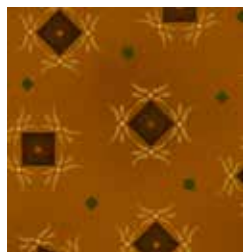
PIECING AND ADDING THE BORDER

- Join seven reserved pieced Hourglass blocks end to end. Press the seam allowances open. Repeat for a second pieced Hourglass strip. Join these strips to the right and left sides of the quilt center. Press the seam allowances open.
- Join nine Hourglass blocks end to end. Press the seam allowances open. Repeat for a second pieced Hourglass strip. Join these strips to the remaining sides of the quilt center. Press the seam allowances open. The pieced quilt top should now measure $36\frac{1}{2}$ " square, including the seam allowances.

COMPLETING THE QUILT

Layer the quilt top, batting, and backing. Quilt the layers. Join the $2\frac{1}{2}$ "-wide random lengths of assorted prints to make a 156" length of binding, and use it to bind the quilt.

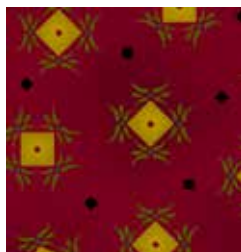
Sunday Best Fabrics in the Collection



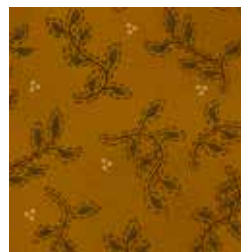
6508-30



6508-77



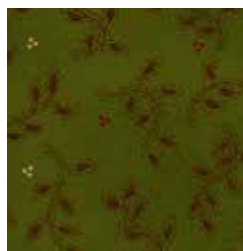
6508-88



6509-30



6509-44



6509-66



6510-33



6510-88



6510-99



6511-44



6511-66



6511-88



6512-33



6512-77



6512-88



6513-33



6513-66



6513-99



6514-11



6514-40



6514-44



6514-55



6515-44



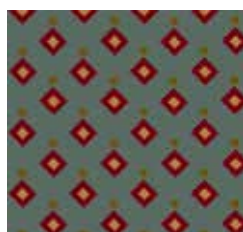
6515-55



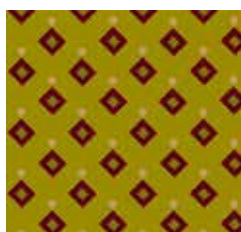
6515-66



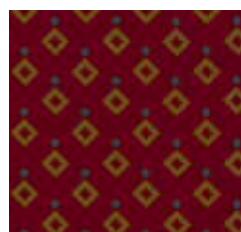
6515-77



6516-11



6516-40



6516-88