

Butterfly Botanical

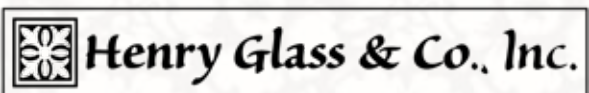


Blue Colorway

Pink Colorway

Quilt #1

A Free Project Sheet From



facebook

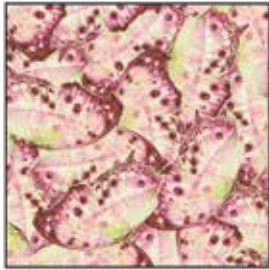
Finished Quilt Size: 54" x 70"
49 West 37th Street, New York, NY 10018
tel: 212-686-5194 fax: 212-532-3525
Toll Free: 800-294-9495
www.henryglassfabrics.com

BUTTERFLY BOTANICAL

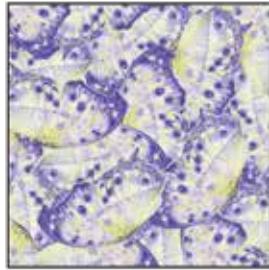
Finished Quilt Size: 54" x 70"

Quilt #1

Fabrics in the Collection



Butterfly Wing Texture - Pink
9854-22



Butterfly Wing Texture - Blue
9854-11



Wallpaper Stripe - Tan
9853-44



Wallpaper Stripe - Blue
9853-11



Tonal Butterflies - Tan
9852-44



Tonal Butterflies - Pink
9852-22



Tonal Butterflies - Blue
9852-11



Botanical Floral - Purple
9851-55



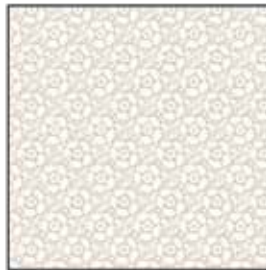
Botanical Floral - Brown
9851-33



Botanical Floral w/ Butterflies - Purple
9850-55



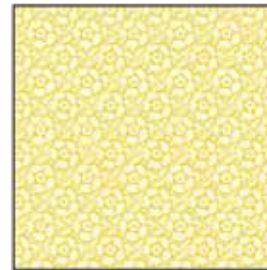
Botanical Floral w/ Butterflies - Pink
9850-22



Tonal Floral - Grey
9849-99



Tonal Floral - Green
9849-66



Tonal Floral - Yellow
9849-44



Butterfly Panel - Grey/Pink
9848P-92



Butterfly Panel - Grey/Purple
9847P-95

Select Fabrics from Folio



Folio - Dk. Olive
7755-65



Folio - Off White
7755-04

Materials

Blue Colorway

1 panel	Butterfly Panel - Grey/Purple (A)	9847P-95
1 panel	Butterfly Panel - Grey/Pink (B)	9848P-92
5/8 yard	Tonal Butterflies - Blue (C)	9852-11
5/8 yard	Tonal Butterflies - Pink (D)	9852-22
1/4 yard	Botanical Floral - Purple (E)	9851-55
1/4 yard	Tonal Butterflies - Tan (F)	9852-44
1/4 yard	Tonal Floral - Yellow (G)	9849-44
1/4 yard	Botanical Floral w/Butterflies - Pink (H)	9850-22
1/4 yard	Butterfly Wing Texture - Pink (I)	9854-22
1/2 yard	Tonal Floral - Grey (J)	9849-99
1/4 yard	Botanical Floral - Brown (K)	9851-33
1/4 yard	Tonal Floral - Green (L)	9849-66
1/4 yard	Butterfly Wing Texture - Blue (M)	9854-11
1/4 yard	Botanical Floral w/Butterflies - Purple (N)	9850-55
2 1/4 yards	Wallpaper Stripe - Blue (O)	9853-11
7/8 yard	Folio - Dk. Olive (P)	7755-65*
3 1/2 yards	Tonal Butterflies - Tan (Backing)	9852-44

Pink Colorway

1 panel	Butterfly Panel - Grey/Purple (A)	9847P-95
1 panel	Butterfly Panel - Grey/Pink (B)	9848P-92
5/8 yard	Tonal Butterflies - Blue (C)	9852-11
5/8 yard	Tonal Butterflies - Pink (D)	9852-22
1/4 yard	Botanical Floral - Purple (E)	9851-55
1/4 yard	Tonal Butterflies - Tan (F)	9852-44
1/4 yard	Tonal Floral - Yellow (G)	9849-44
1/4 yard	Botanical Floral w/Butterflies - Pink (H)	9850-22
1/4 yard	Butterfly Wing Texture - Pink (I)	9854-22
1/2 yard	Tonal Floral - Grey (J)	9849-99
1/4 yard	Botanical Floral - Brown (K)	9851-33
1/4 yard	Tonal Floral - Green (L)	9849-66
1/4 yard	Butterfly Wing Texture - Blue (M)	9854-11
1/4 yard	Botanical Floral w/Butterflies - Purple (N)	9850-55
2 1/4 yards	Wallpaper Stripe - Tan (O)	9853-44
7/8 yard	Folio - Dk. Olive (P)	7755-65*
3 1/2 yards	Tonal Butterflies - Tan (Backing)	9852-44

*Includes binding

Quilt Cutting Instructions

Please note: all strips are cut across the width of fabric (WOF) from selvage to selvage edge unless otherwise noted.

From the Butterfly Panel - Grey/Purple (A):

- Fussy cut (9) 6 3/4" panels.

From the Butterfly Panel - Grey/Pink (B):

- Fussy cut (8) 6 3/4" panels.

From the Tonal Butterflies - Blue (C), cut:

- (1) 6 3/4" x WOF strip. Sub-cut strip into (18) 2" x 6 3/4" strips.
- (1) 9 3/4" x WOF strip. Sub-cut strip into (18) 2" x 9 3/4" strips.

From the Tonal Butterflies - Pink (D), cut:

- (1) 6 3/4" x WOF strip. Sub-cut strip into (16) 2" x 6 3/4" strips.
- (1) 9 3/4" x WOF strip. Sub-cut strip into (16) 2" x 9 3/4" strips.

From the Botanical Floral - Purple (E), cut:

- (2) 2 1/2" x WOF strips. Sub-cut strips into (28) 2 1/2" squares.

From the Tonal Butterflies - Tan (F), cut:

- (2) 2 1/2" x WOF strips. Sub-cut strips into (20) 2 1/2" squares.

From the Tonal Floral - Yellow (G), cut:

- (2) 2 1/2" x WOF strips. Sub-cut strips into (20) 2 1/2" squares.

From the Botanical Floral w/Butterflies - Pink (H), cut:

- (2) 2 1/2" x WOF strips. Sub-cut strips into (22) 2 1/2" squares.

From the Butterfly Wing Texture - Pink (I), cut:

- (2) 2 1/2" x WOF strips. Sub-cut strips into (27) 2 1/2" squares.

From the Tonal Floral - Grey (J), cut:

- (5) 2 1/2" x WOF strips. Sub-cut strips into (70) 2 1/2" squares.

From the Botanical Floral - Brown (K), cut:

- (2) 2 1/2" x WOF strips. Sub-cut strips into (18) 2 1/2" squares.

From the Tonal Floral - Green (L), cut:

- (2) 2 1/2" x WOF strips. Sub-cut strips into (27) 2 1/2" squares.

From the Butterfly Wing Texture - Blue (M), cut:

- (2) 2 1/2" x WOF strips. Sub-cut strips into (24) 2 1/2" squares.

From the Botanical Floral w/ Butterflies - Purple (N), cut:

- (2) 2 1/2" x WOF strips. Sub-cut strips into (32) 2 1/2" squares.

From the Wallpaper Stripe - Blue (Wallpaper Stripe - Tan) (O), cut:

- (2) 6 1/2" x 74" strips from the length of fabric (LOF).
- (2) 6 1/2" x 58" LOF strips.

From the Folio - Dk. Olive (P), cut:

- (5) 1 1/2" x WOF strips. Sew the strips together, end to end with diagonal seams, and cut (2) 1 1/2" x 56 1/2" strips and (2) 1 1/2" x 42 1/2" strips.
- (7) 2 1/2" x WOF strips for the binding.

From the Tonal Butterflies - Tan (Backing), cut:

- (2) 62" x WOF strips for the backing. Sew the strips together and trim to make the 62" x 78" back.

BUTTERFLY BOTANICAL

Quilt #1

Sewing Instructions

1. Follow Figure 1 for fabric placement to sew (16) assorted $2\frac{1}{2}$ " squares together into a 4×4 matrix to make (1) Block One.

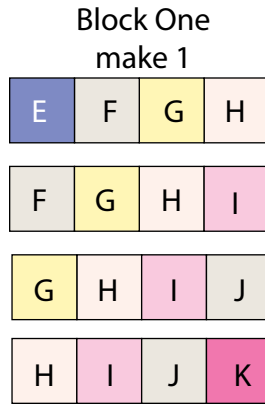


Fig. 1

2. Follow Figure 2 for fabric placement to sew (16) assorted $2\frac{1}{2}$ " squares together into a 4×4 matrix to make (1) Block Two. Repeat to make (9) Block Twos total.

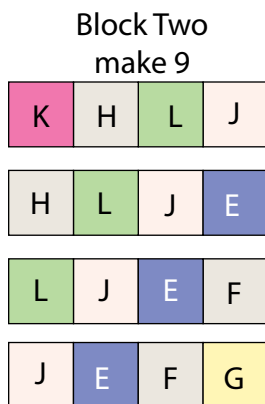


Fig. 2

4. Sew (1) $2'' \times 6\frac{3}{4}''$ Fabric D strip to each side of (1) $6\frac{3}{4}''$ Fabric B panel. Sew (1) $2'' \times 9\frac{3}{4}''$ Fabric D strip to the top and to the bottom of the Fabric B panel. Trim the block to measure $8\frac{1}{2}''$ square to make (1) Block Four (Fig. 4). Repeat to make (8) Block Fours total.

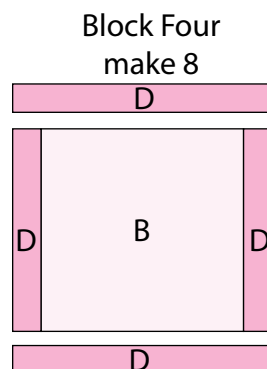


Fig. 4

5. Sew (1) $2'' \times 6\frac{3}{4}''$ Fabric C strip to each side of (1) $6\frac{3}{4}''$ Fabric A panel. Sew (1) $2'' \times 9\frac{3}{4}''$ Fabric C strip to the top and to the bottom of the Fabric A panel (Fig. 5). Trim the block to measure $8\frac{1}{2}''$ square to make (1) Block Five. Repeat to make (9) Block Fives total.

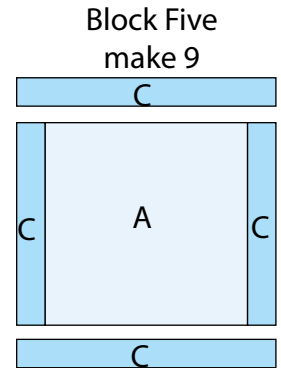


Fig. 5

Quilt Top Assembly

(Refer to the *Quilt Layout while assembling.*)

6. Sew (1) Block One, (2) Block Fours, (1) Block Two and (1) Block Three together to make Row One.

7. Sew (3) Block Fives, (1) Block Two and (1) Block Three together to make Row Two. Repeat to make Rows Four and Six. *Note the position of the blocks as they change.*

8. Sew (2) Block Twos, (2) Block Fours and (1) Block Three together to make Row Three and Row Seven. *Note the position of the blocks as they change.*

9. Sew (2) Block Threes, (2) Block Fours and (1) Block Two to make Row Five.

10. Sew the seven rows together, in numerical order, to make the quilt top.

11. Sew (1) $1\frac{1}{2}'' \times 56\frac{1}{2}''$ Fabric P strip to each side of the quilt top. Sew (1) $1\frac{1}{2}'' \times 42\frac{1}{2}''$ Fabric P strip to the top and to the bottom of the quilt top.

12. Center (1) $6\frac{1}{2}'' \times 74''$ Fabric O strip on one side of the quilt top and pin in place. Start sewing the strip a $\frac{1}{4}''$ from the top edge of the quilt top and stop a $\frac{1}{4}''$ from the bottom edge. **DO NOT TRIM THE EXCESS.** Repeat with the opposite side.

13. Repeat Step 11 to sew (1) $6\frac{1}{2}'' \times 58''$ Fabric O strip to the top and to the bottom of the quilt top, making sure to stop and start $\frac{1}{4}''$ away from each end of the quilt top. To miter each corner, fold the quilt top on a diagonal, wrong side together. This should line up the strips from adjacent sides (Fig. 6).

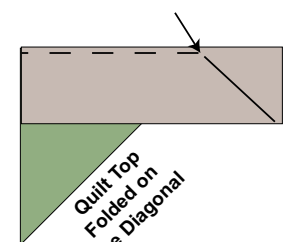


Fig. 6

BUTTERFLY BOTANICAL

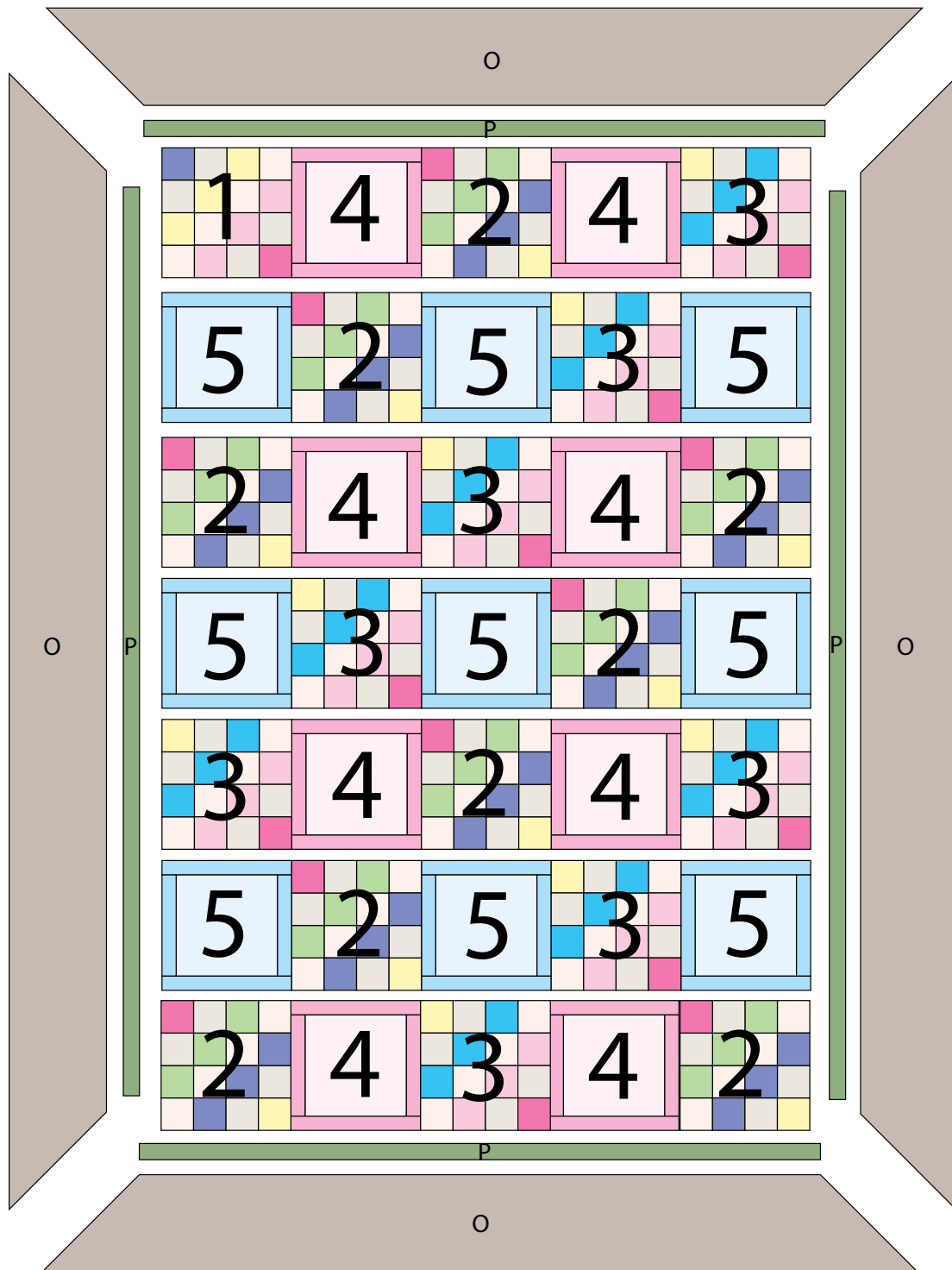
Quilt #1

14. Starting at the sewn seam (represented by the arrow in Figure 6), draw a 45-degree line to the edge of the fabric. Sew on the drawn line. Trim the excess fabric leaving a 1/4" seam. Repeat this step with the remaining corners.

15. Layer and quilt as desired.

16. Sew the (7) 2 1/2" x WOF Fabric P strips together, end to end with 45-degree seams, to make the binding. Fold this long strip in half lengthwise with wrong sides together and press.

17. Bind as desired.



Quilt Layout