

Butterfly Botanical



Pink Colorway

Blue Colorway

Quilt #2

A Free Project Sheet From

 **Henry Glass & Co., Inc.**



facebook

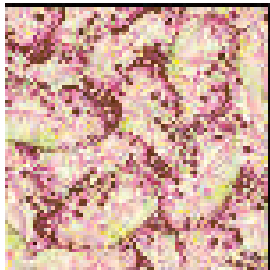
Finished Quilt Size: 69" x 87"
49 West 37th Street, New York, NY 10018
tel: 212-686-5194 fax: 212-532-3525
Toll Free: 800-294-9495
www.henryglassfabrics.com

BUTTERFLY BOTANICAL

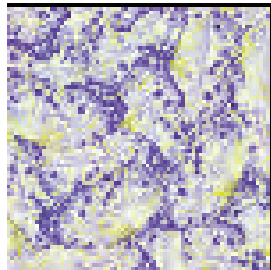
Finished Quilt Size: 69" x 87"

Quilt #2

Fabrics in the Collection



Butterfly Wing Texture - Pink
9854-22



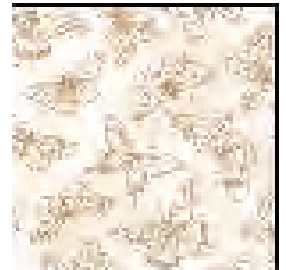
Butterfly Wing Texture - Blue
9854-11



Wallpaper Stripe - Tan
9853-44



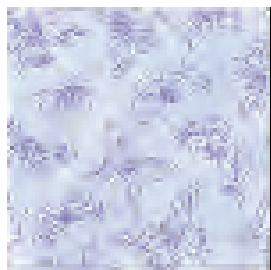
Wallpaper Stripe - Blue
9853-11



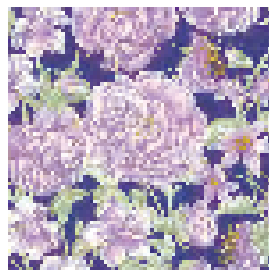
Tonal Butterflies - Tan
9852-44



Tonal Butterflies - Pink
9852-22



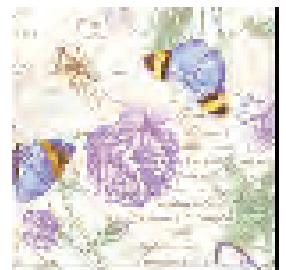
Tonal Butterflies - Blue
9852-11



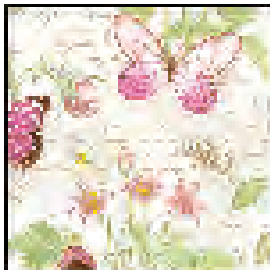
Botanical Floral - Purple
9851-55



Botanical Floral - Brown
9851-33



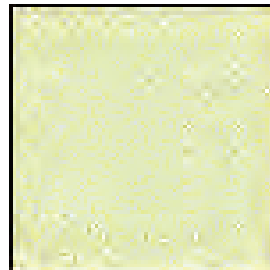
Botanical Floral w/ Butterflies - Purple
9850-55



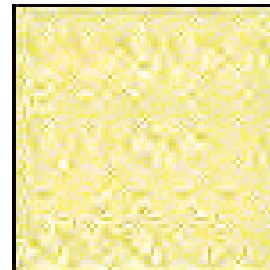
Botanical Floral w/ Butterflies - Pink
9850-22



Tonal Floral - Grey
9849-99



Tonal Floral - Green
9849-66



Tonal Floral - Yellow
9849-44



Butterfly Panel - Grey/Pink
9848P-92



Butterfly Panel - Grey/Purple
9847P-95

Select Fabrics from Folio



Folio - Dk. Olive
7755-65



Folio - Off White
7755-04

BUTTERFLY BOTANICAL

Quilt #2

Page 1

Materials

Pink Colorway

1/3 yard	Botanical Floral - Brown (A)	9851-33
1 yard	Tonal Butterflies - Pink (B)	9852-22*
2/3 yard	Butterfly Wing Texture - Pink (C)	9854-22
7/8 yard	Botanical Floral w/Butterflies - Pink (D)	9850-22
1/3 yard	Tonal Floral - Grey (E)	9849-99
1/4 yard	Tonal Butterflies - Tan (F)	9852-44
1/4 yard	Tonal Floral - Yellow (G)	9849-44
2 yards	Wallpaper Stripe - Tan (H)	9853-44
2 7/8 yards	Folio - Off White (I)	7755-04
5 1/2 yards	Tonal Floral - Grey (Backing)	9849-99

Blue Colorway

1/3 yard	Botanical Floral - Purple (A)	9851-55
1 yard	Tonal Butterflies - Blue (B)	9852-11*
2/3 yard	Butterfly Wing Texture - Blue (C)	9854-11
7/8 yard	Botanical Floral w/Butterflies - Purple (D)	9850-55
1/3 yard	Tonal Floral - Grey (E)	9849-99
1/4 yard	Tonal Butterflies - Tan (F)	9852-44
1/4 yard	Tonal Floral - Green (G)	9849-66
2 yards	Wallpaper Stripe - Blue (H)	9853-11
2 7/8 yards	Folio - Off White (I)	7755-04
5 1/2 yards	Tonal Floral - Grey (Backing)	9849-99

*Includes binding

Quilt Cutting Instructions

Please note: all strips are cut across the width of fabric (WOF) from selvage to selvage edge unless otherwise noted.

From the Botanical Floral (A), cut:

- (2) 4 1/2" x WOF strips.

From the Tonal Butterflies (B), cut:

- (2) 4 1/2" x WOF strips.
- (8) 2 1/2" x WOF strips for the binding.

From the Butterfly Wing Texture (C), cut:

- (2) 4 1/2" x WOF strips.
- (3) 2 1/2" x WOF strips. Sew the strips together, end to end with diagonal seams, and cut (2) 2 1/2" x 54 1/2" strips.
- (1) 2 1/2" x WOF strip. Sub-cut strip into (4) 2 1/2" squares.

From the Botanical Floral w/ Butterflies (D), cut:

- (3) 4 1/2" x WOF strips.
- (4) 2 1/2" x WOF strips. Sew the strips together, end to end with diagonal seams, and cut (2) 2 1/2" x 64 1/2" strips.
- (1) 2 1/2" x WOF strip. Sub-cut strip into (4) 2 1/2" x 8" strips.

From the Tonal Floral - Grey (E) cut:

- (2) 4 1/2" x WOF strips.

From the Tonal Butterflies - Tan (F), cut:

- (1) 4 1/2" x WOF strip.

From the Tonal Floral (G), cut:

- (1) 4 1/2" x WOF strip.

From the Wallpaper Stripe (H), cut:

- (2) 6" x 68 1/2" strips from the length of fabric (LOF), each centered on the wide stripe.
- (2) 6" x 46 1/2" LOF strips, each centered on the wide stripe.
- (4) 6 3/8" squares, each centered on the wide stripe.

From the Folio - Off White (I), cut:

- (2) 2 1/2" x 69 1/2" LOF strips.
- (4) 2 1/2" x 64 1/2" LOF strips.
- (6) 2 1/2" x 60 1/2" LOF strips.
- (4) 2 1/2" x 46 1/2" LOF strips.
- (1) 8 1/2" x WOF strip. Sub-cut the strip into (5) 4 1/2" x 8 1/2" strips and (4) 4 1/2" squares.
- (4) 3 1/2" x WOF strips. Sew the strips together, end to end with diagonal seams, and cut (2) 3 1/2" x 60 1/2" strips.
- (1) 8" x WOF strip. Sub-cut the strip into (8) 2 1/2" x 8" strips and (4) 2 1/2" x 6" strips.

From the Tonal Floral - Grey (Backing), cut:

- (2) 95" x WOF strips for the backing. Sew the strips together and trim to make the 77" x 95" back.

Sewing Instructions

1. Follow Figure 1 for fabric placement and sew (13) assorted 4 1/2" x WOF strips together, lengthwise, to make (1) strip set. Sub-cut the strip set into (7) 4 1/2" x 52 1/2" AE strips.

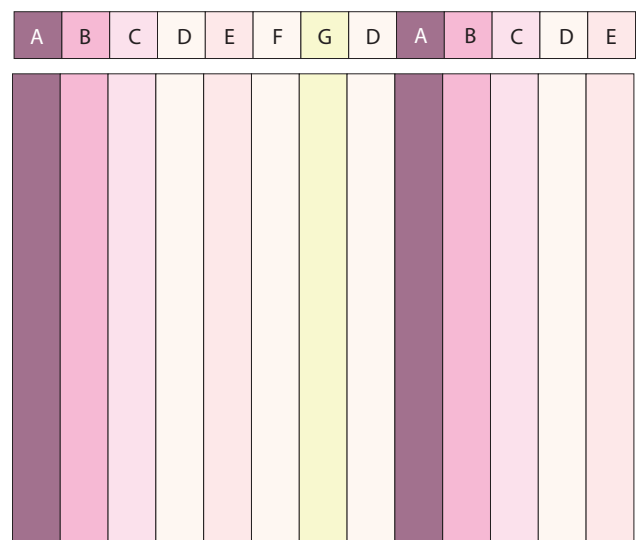


Fig. 1

2. Making sure that the stripe is running in the same direction on both squares as shown with the arrows in Figure 2, place (1) $6\frac{3}{8}$ " Fabric H square on top of another $6\frac{3}{8}$ " Fabric H square, right sides together. Draw a line across the diagonal of the top square (Fig. 2). Sew $\frac{1}{4}$ " away from each side of the drawn diagonal line (Fig. 2). Cut the two squares apart on the drawn diagonal line (Fig. 3) to make two Fabric H half-square triangles (HST) (Fig. 4). Trim the HST units to 6" square. Repeat to make (4) Fabric H HST units total

Note: Make sure the stripe is running in the same direction on both pieces as shown with the arrows.

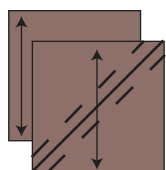


Fig. 2

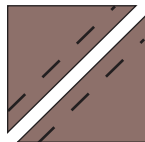


Fig. 3

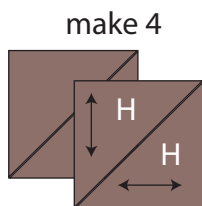


Fig. 4

3. Sew (1) $2\frac{1}{2}$ " x 6" Fabric I strip to the left side of (1) Fabric H HST unit. Sew (1) $2\frac{1}{2}$ " x 8" Fabric I strip to the top and to the right side of the Fabric H HST unit (Fig. 5) to make (1) left top corner block. Repeat to make (1) right bottom corner block.

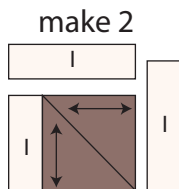


Fig. 5

4. Repeat Step 3 using the other two Fabric H HST units, (2) $2\frac{1}{2}$ " x 6" Fabric I strips and (4) $2\frac{1}{2}$ " x 8" Fabric I strips to make (1) right top corner block and (1) left bottom corner block (Fig. 6).

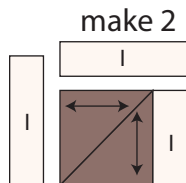


Fig. 6

5. Sew (1) $4\frac{1}{2}$ " x $8\frac{1}{2}$ " Fabric I strip to the Fabric E end of (1) AE strip to make (1) AI strip. Repeat to make (3) AI strips total.

6. Sew (1) $4\frac{1}{2}$ " Fabric I square to each end of (1) AE strip to make (1) II strip. Repeat to make a second II strip.

7. Sew (1) $4\frac{1}{2}$ " x $8\frac{1}{2}$ " Fabric I strip to the Fabric A end of (1) AE strip to make (1) IE strip. Repeat to make a second IE strip.

8. Sew the (3) AI strips, (6) $2\frac{1}{2}$ " x $60\frac{1}{2}$ " Fabric I strips, (2) II strips and (2) IE strips together, lengthwise, to make the center block (Fig. 7).

9. Sew (1) $3\frac{1}{2}$ " x $60\frac{1}{2}$ " Fabric I strip to each side of the center block. Sew (1) $2\frac{1}{2}$ " x $46\frac{1}{2}$ " Fabric I strip to the top and to the bottom of the center block (Fig. 7).

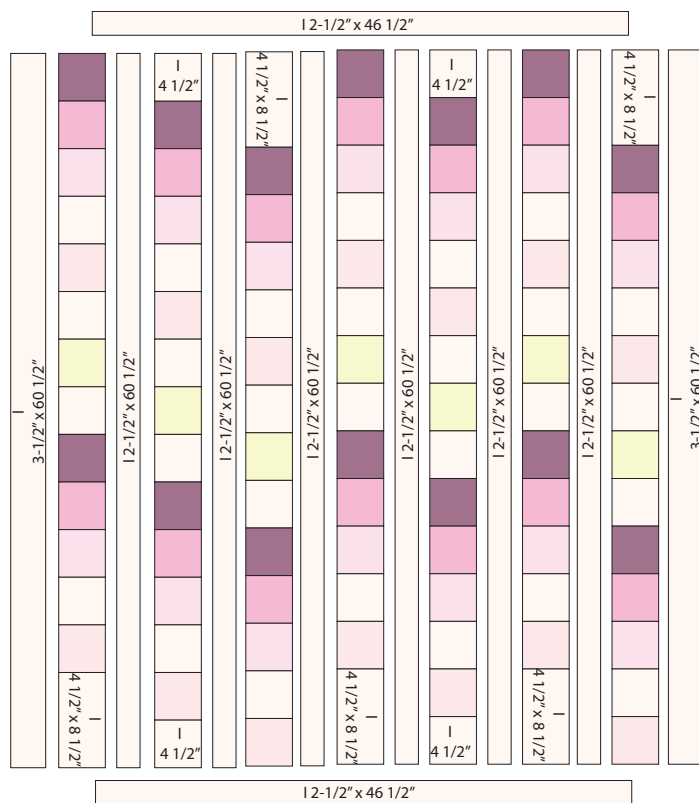


Fig. 7

10. Sew (1) $2\frac{1}{2}$ " x $64\frac{1}{2}$ " Fabric I strip and (1) $2\frac{1}{2}$ " x $64\frac{1}{2}$ " Fabric D strip together, lengthwise, to make (1) ID strip. Repeat to make a second ID strip.

11. Sew (1) $2\frac{1}{2}$ " Fabric C square to each end of (1) $2\frac{1}{2}$ " x $64\frac{1}{2}$ " Fabric I strip to make (1) CIC strip. Repeat to make a second CIC strip.

12. Sew (1) $2\frac{1}{2}$ " x $46\frac{1}{2}$ " Fabric I strip to the top of (1) 6 " x $46\frac{1}{2}$ " Fabric H strip, lengthwise, to make (1) IH strip. Repeat to make a second IH strip with the Fabric I strip on the bottom of the Fabric H strip.

Quilt Top Assembly

(Refer to the Quilt Layout while assembling.)

13. Sew (1) ID strip to each side of the center block.

14. Sew (1) $2\frac{1}{2}$ " x $54\frac{1}{2}$ " Fabric C strip to the top and to the bottom of the center block to make the quilt top.

15. Sew (1) CIC strip to the left side of (1) 6 " x $68\frac{1}{2}$ " Fabric H strip. Sew this strip to the left side of the quilt top. Sew (1) CIC strip to the right side of (1) 6 " x $68\frac{1}{2}$ " Fabric H strip. Sew this strip to the right side of the quilt top.

16. Sew (1) $2\frac{1}{2}$ " x $69\frac{1}{2}$ " Fabric I strip to the top and to the bottom of the quilt top.

BUTTERFLY BOTANICAL

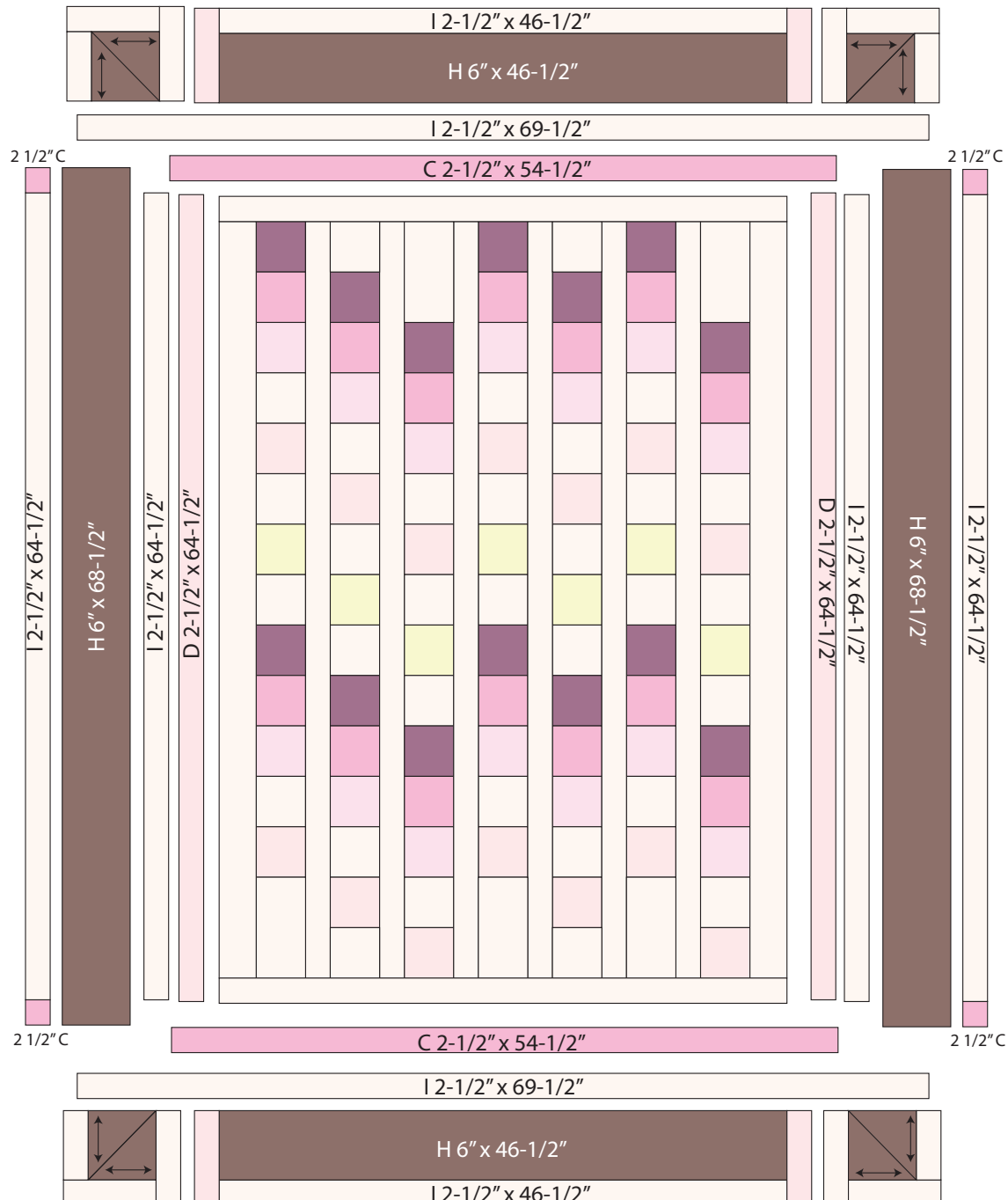
Quilt #2

17. Sew (1) 2 1/2" x 8" Fabric D strip to each end of both IH strips. Using the quilt layout as a guide, sew the appropriate corner blocks to each end of the IH strips. Sew the strips to the top and to the bottom of the quilt top.

18. Layer and quilt as desired.

19. Sew the (8) 2 1/2" x WOF Fabric B strips together, end to end with 45-degree seams, to make the binding. Fold this long strip in half lengthwise with wrong sides together and press.

20. Bind as desired.



Quilt Layout