

# Little House on the Prairie Prairie Flowers

BY KATHY HALL



Prairie Crossing Quilt  
designed by: **Lucy A. Fazely**  
Quilt Size: **48" x 64"**  
[andoverfabrics.com](http://andoverfabrics.com)



LITTLE HOUSE ON THE PRAIRIE® and associated character names and trademarks are owned and licensed by Friendly Family Productions, LLC. All rights reserved. ©2015 Friendly Family Productions, LLC

andover



makower uk  
*The Henley Studio*

Free Pattern Download Available

1384 Broadway New York, NY 10018  
Tel. (800) 223-5678 • [andoverfabrics.com](http://andoverfabrics.com)

# Prairie Crossing Quilt



Introducing Andover Fabrics new collection:

Little House on the Prairie® – PRAIRIE FLOWERS by Kathy Hall

Quilt designed by Lucy A. Fazely

Quilt finishes 48" x 64"

24 Block Y: 8" x 8"

24 Block Z: 8" x 8"

*Light and dark prints play against one another to form subtle diagonal lines that shift and move across the quilt. The fun is deciding which light and dark prints to combine in each block. Simple rotary cutting and trimming the blocks to size after piecing ensure a winning quilt that is the perfect size for a peaceful naptime.*

## Fabric Requirements

		Yardage	Fabric
<b>12 Fabric A</b>	blocks	fat ¼ yard ea.	
7925-L	7926-L	7947-K	7948-R
7948-Y	7949-B	7949-N	7949-T
7950-E	7951-B	7951-G	7952-K
<b>12 Fabric B</b>	blocks	fat ¼ yard ea.	
7924-B	7924-L	7947-B	7947-N
7948-B	7949-E	7949-K	7949-Y
*7950-C	7950-Y	7951-R	7952-B
<b>Fabric C</b>	binding	½ yard	7952-T
<b>*Backing</b>		3½ yards	7950-C
Also needed: 8½" or larger square acrylic ruler			

## Cutting Directions

**Note:** Read assembly directions before cutting patches. All measurements are cut sizes and include ¼" seam allowances. A fat ¼ is an 18" x 20"-22" cut. WOF designates the width of fabric from selvedge to selvedge (approximately 42" wide).

### 12 Fabric A From each:

Cut (4) squares 7¾" x 7¾", cut in half diagonally twice to make 16 quarter-square triangles

Cut (4) squares 2" x 2"

### 12 Fabric B From each:

Cut (16) strips 2" x 7"

### Fabric C

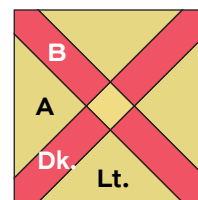
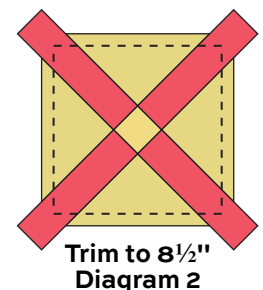
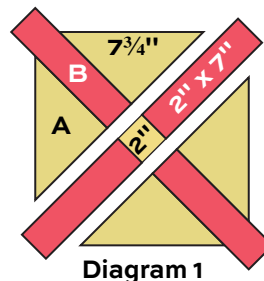
Cut (6) strips 2½" x WOF for binding

### Backing

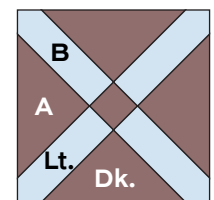
Cut (2) panels 36" x 56", pieced to fit quilt top with overlap on all sides

## Making the Quilt

1. For each Block Y, choose a dark Fabric B print for the "X" strips and a light Fabric A print for the triangle and center patches. For each Block Z, choose a light Fabric B print and a dark Fabric A print. Referring to Diagram 1, sew 2 triangles to the sides of a strip, noting alignment of patches. Press seam allowances away from the strip. Repeat to make a second unit. Sew 2 strips to opposite sides of a 2" square. Press seam allowances toward the center square. Join the 3 units to make a block. Align the square ruler on the block, and trim the block to 8½". Be careful to trim the same amount on all sides so the seams of the X's match at the corners where the blocks join. Make 24 Block Y and 24 Block Z.
2. Referring to the Quilt Diagram, arrange Block Y's and Block Z's in 8 rows of 6 blocks each, alternating the Y and Z blocks as shown. Note that odd numbered rows begin with a Y block; even numbered rows begin with a Z block. Once you are satisfied with the arrangement, join the blocks into 8 rows. Press seam allowances between the rows in opposite directions. Join the rows.



Block Y – Make 24



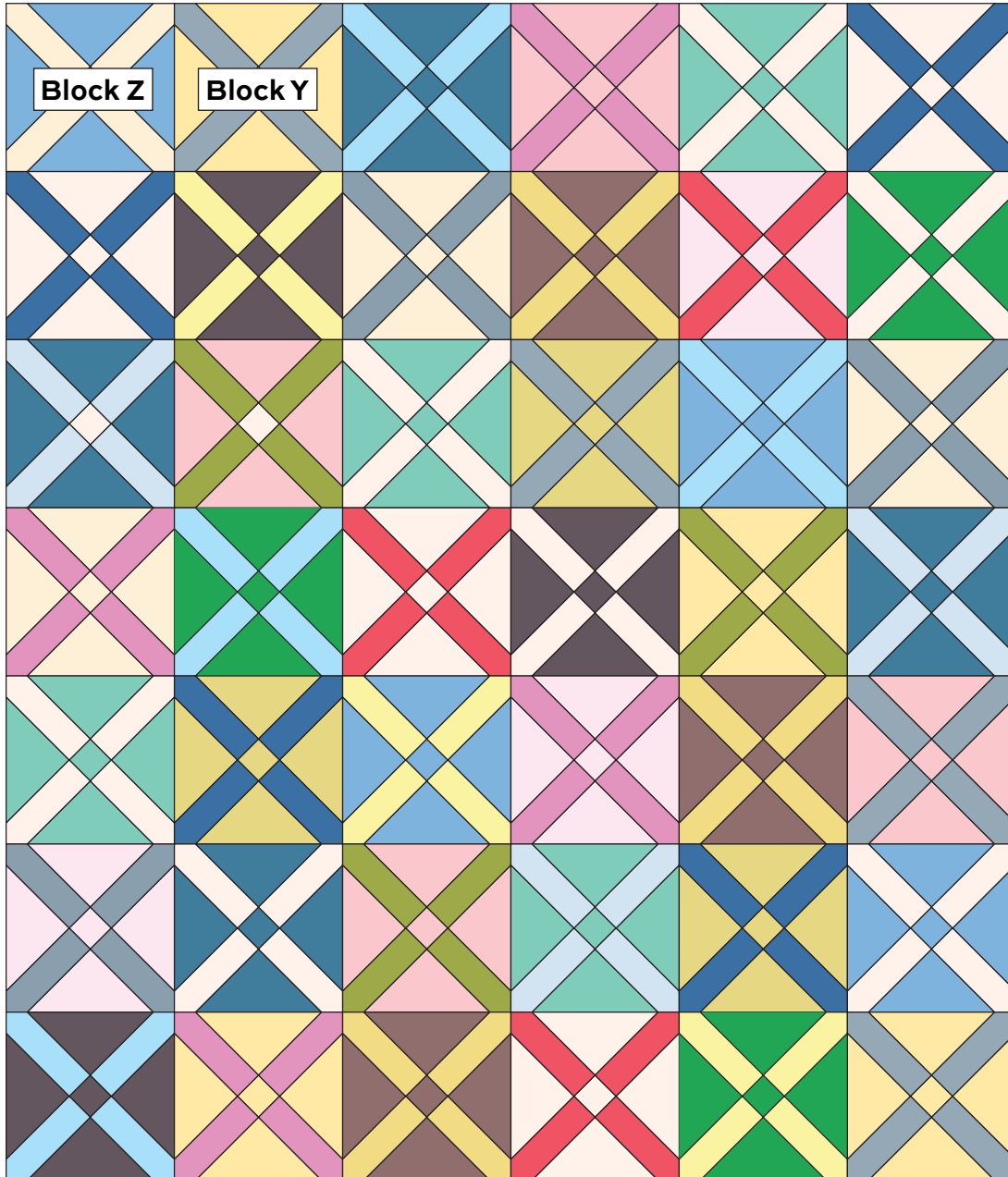
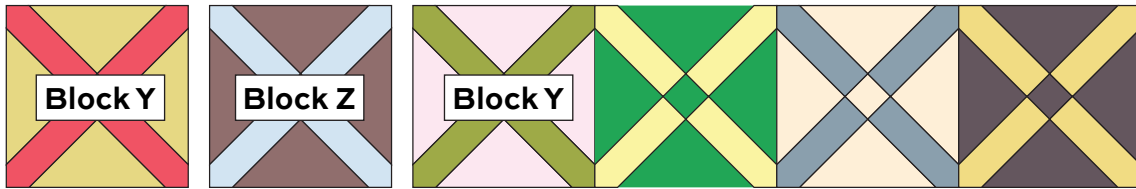
Block Z – Make 24



# Prairie Crossing Quilt

## Finishing the Quilt

3. Layer the quilt with batting and backing and baste. Quilt in the ditch around borders and block patches. Quilt around the printed motifs in the blocks and outer border. Bind to finish the quilt.



Quilt Diagram

# Little House on the Prairie Prairie Flowers



BY KATHY HALL



7950-C\*



7950-E\*



7950-Y\*



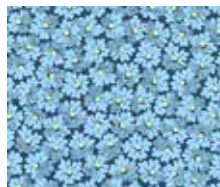
7947-B\*



7947-K\*



7947-N\*



7949-B\*



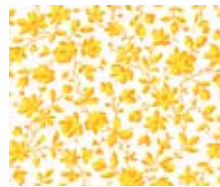
7949-N\*



7948-B\*



7948-R\*



7948-Y\*



7949-E\*



7949-P\*



7951-B\*



7951-G\*



7951-R\*



7949-G\*



7949-T\*



7952-B\*



7952-K\*



7952-T\*



7949-K\*



7949-Y\*

Blend with fabrics from **Little House on the Prairie Icons** by Kathy Hall



7924-B\*



7924-L\*



7925-L\*



7926-L\*

\*Indicates fabrics used in quilt pattern. Fabrics shown are 50% of actual size.

andover



makower uk  
*The Henley Studio*

Free Pattern Download Available

1384 Broadway New York, NY 10018  
Tel. (800) 223-5678 • andoverfabrics.com