

# Little House on the Prairie® Prairie Flowers

BY KATHY HALL



Chimney Bricks Quilt  
designed by: Jean Ann Wright  
Quilt Size: 48" x 60"  
[andoverfabrics.com](http://andoverfabrics.com)



LITTLE HOUSE ON THE PRAIRIE® and associated character names and trademarks are owned and licensed by Friendly Family Productions, LLC. All rights reserved. ©2015 Friendly Family Productions, LLC

andover



makower uk  
*The Henley Studio*

Free Pattern Download Available

1384 Broadway New York, NY 10018  
Tel. (800) 223-5678 • [andoverfabrics.com](http://andoverfabrics.com)

# Chimney Bricks Quilt



Introducing Andover Fabrics new collection:

Little House on the Prairie® – PRAIRIE FLOWERS by Kathy Hall

Quilt designed by Jean Ann Wright

Quilt finishes 48" x 60"

*Are you looking for a fun and easy quilt to make? Since the strips are precut the correct width, all you have to do is cut them into squares and rectangles that are joined into this scrappy throw. The light squares form an interesting secondary pattern of vertical columns.*

## Fabric Requirements

		Yardage	Fabric
<b>2½" Squares Packet</b>	setting	1 packet	
<b>Fabric A</b>	binding	½ yard	7947-K
<b>*Backing</b>		¾ yards	7925-R

## Cutting Directions

**Note:** Read assembly directions before cutting patches.

All measurements are cut sizes and include ¼" seam allowances. WOF designates the width of fabric from selvedge to selvedge (approximately 42" wide).

### 2½" Strips Packet

Read Step 1

### Fabric A

Cut (6) strips 2½" x WOF for binding

### Backing

Cut (2) panels 34" x 56", pieced to fit quilt top with overlap on all sides

## Making the Quilt

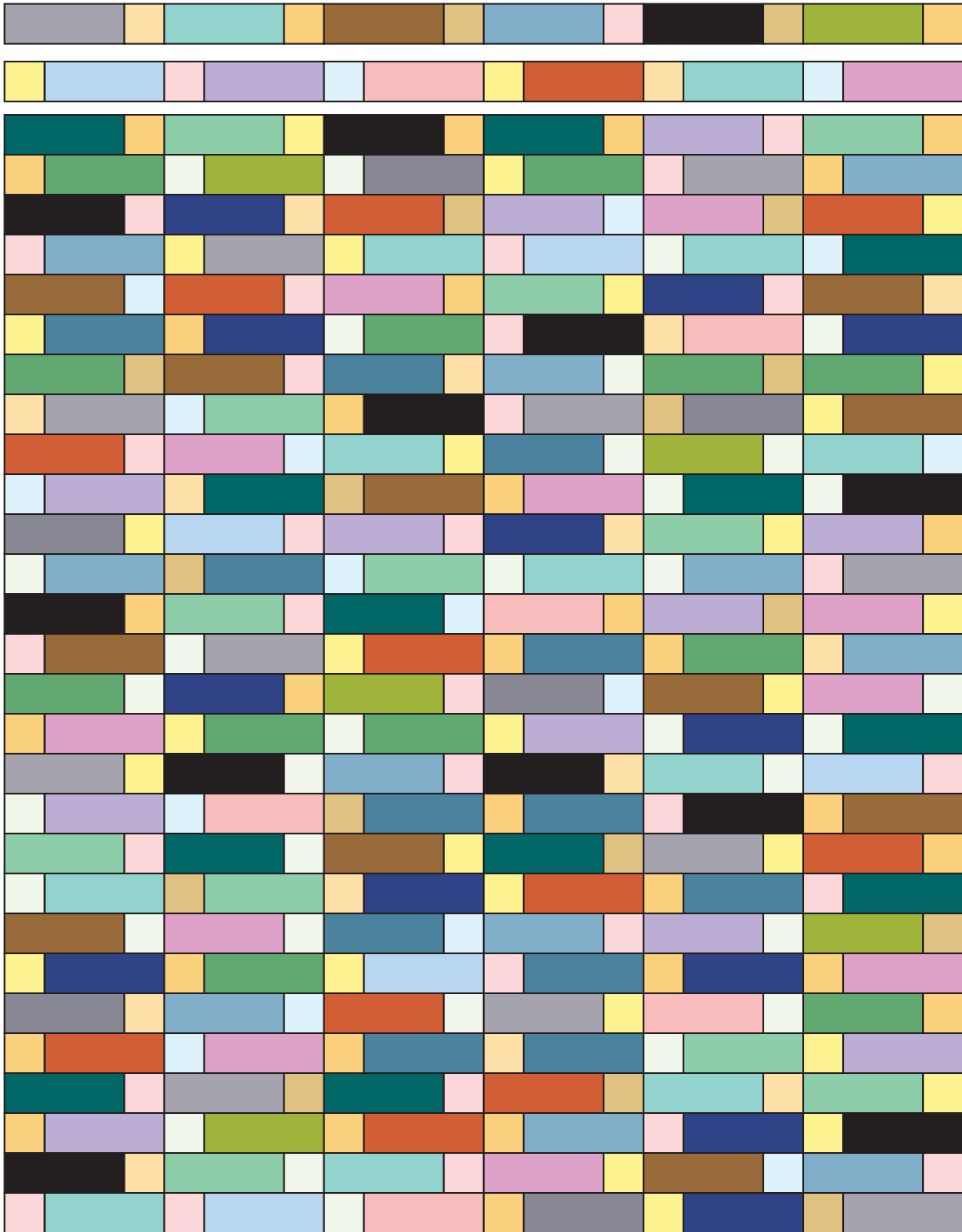
1. Cut yellow and white strips into squares 2½" x 2½" (180 total). Cut remaining strips into rectangles 2½" x 6½" (180 total).
2. Referring to the Quilt Diagram, arrange 6 rectangles alternately with 6 squares to make a horizontal row. Note that odd-numbered rows begin with a rectangle and even-numbered rows begin with a square. Be sure that the various prints are scattered across the quilt and that no fabric touches itself. Once you are happy with the arrangement, join the squares and rectangles into 30 rows. Press the seam allowances toward the rectangles.
3. Join the rows. Press seam allowances open or in one direction.

## Finishing the Quilt

4. Layer the quilt with batting and backing and baste. Quilt in the ditch around patches.
5. Bind to finish the quilt.

# Chimney Bricks Quilt

---



Quilt Diagram

# Little House on the Prairie Prairie Flowers



BY KATHY HALL



7950-C



7947-B



7948-B



7951-B



7952-B



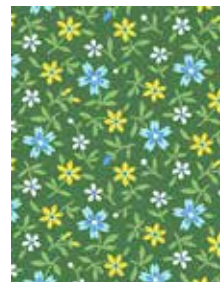
7950-E



7947-K



7948-R



7951-G



7952-K



7950-Y



7947-N



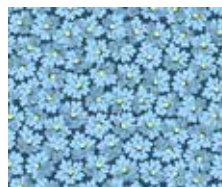
7948-Y



7951-R



7952-T



7949-B



7949-E



7949-G



7949-K



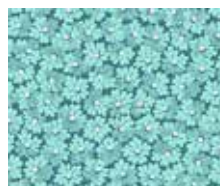
7925-R



7949-N



7949-P



7949-T



7949-Y



7982-B

All fabrics used in quilt pattern. Fabrics shown are 50% of actual size.

andover

•  
• makower uk  
• *The Henley Studio*

Free Pattern Download Available  
1384 Broadway New York, NY 10018  
Tel. (800) 223-5678 • andoverfabrics.com