

# Little House on the Prairie® Walnut Grove

BY KATHY HALL



Broken Dishes Quilt  
designed by: **Jean Ann Wright**

Quilt Size: 36¼" x 44½"

[andoverfabrics.com](http://andoverfabrics.com)



LITTLE HOUSE ON THE PRAIRIE® and associated character names and trademarks are owned and licensed by Friendly Family Productions, LLC. All rights reserved. ©2015 Friendly Family Productions, LLC

andover



makower uk  
*The Henley Studio*

Free Pattern Download Available

1384 Broadway New York, NY 10018  
Tel. (800) 223-5678 • [andoverfabrics.com](http://andoverfabrics.com)

# Broken Dishes Quilt



Introducing Andover Fabrics new collection:

Little House on the Prairie® – WALNUT GROVE by Kathy Hall

Quilt design by Jean Ann Wright

Quilt finishes 36¼" x 44½"

Blocks: 3¾" x 3¾"

*A traditional block from the past is fitting for use with this collection of prints inspired by the American frontier. For those of us who remember the television series, it's fun to think that Laura's ma might have made a quilt using this same block.*

## Cutting Directions

**Note:** Read assembly directions before cutting patches. All measurements are cut sizes and include ¼" seam allowances. Borders are cut the exact lengths required plus ¼" seam allowances. WOF designates the width of fabric from selvedge to selvedge (approximately 42" wide).

### 5" Squares Packet

Read Step 1

### Fabric A

Fussy-cut (2) sashes 6½" x 26¾", cut crosswise

### Fabric B

Fussy-cut (2) side borders 4½" x 37", cut crosswise

Fussy-cut (2) top/bottom borders 4½" x 36¾", cut crosswise

### Fabric C

Cut 5 strips binding 2½" x WOF

### Fabric D

Cut (2) side borders 1½" x 35", cut crosswise

Cut (2) t/b borders 1½" x 28¾"

### Backing

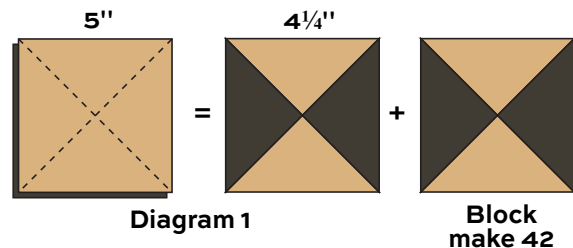
Cut (2) panels 26" x 42", pieced to fit quilt top with overlap on all sides

## Fabric Requirements

		Yardage	Fabric
<b>5" Squares Packet</b>	blocks	1 packet	
<b>Fabric A</b>	sashes	¾ yard	7923-L
<b>Fabric B</b>	border	¾ yard	7924-L
<b>Fabric C</b>	binding	½ yard	7957-NR
<b>Fabric D</b>	border	½ yard	7957-TK
<b>Backing</b>		1½ yards	7982-L

## Making the Quilt

1. Choose 1 light square and 1 dark square. Cut each in half diagonally twice (Diagram 1). You may prefer to stack them and cut both together. Switch the patches and join 2 light and 2 dark triangles to make a block. Hint: Press the seam allowances toward the darker patches. This will make it easier to join the halves. Make a second block like the first. Trim the blocks to 4¼" square. Repeat these steps to make a total of 42 blocks.



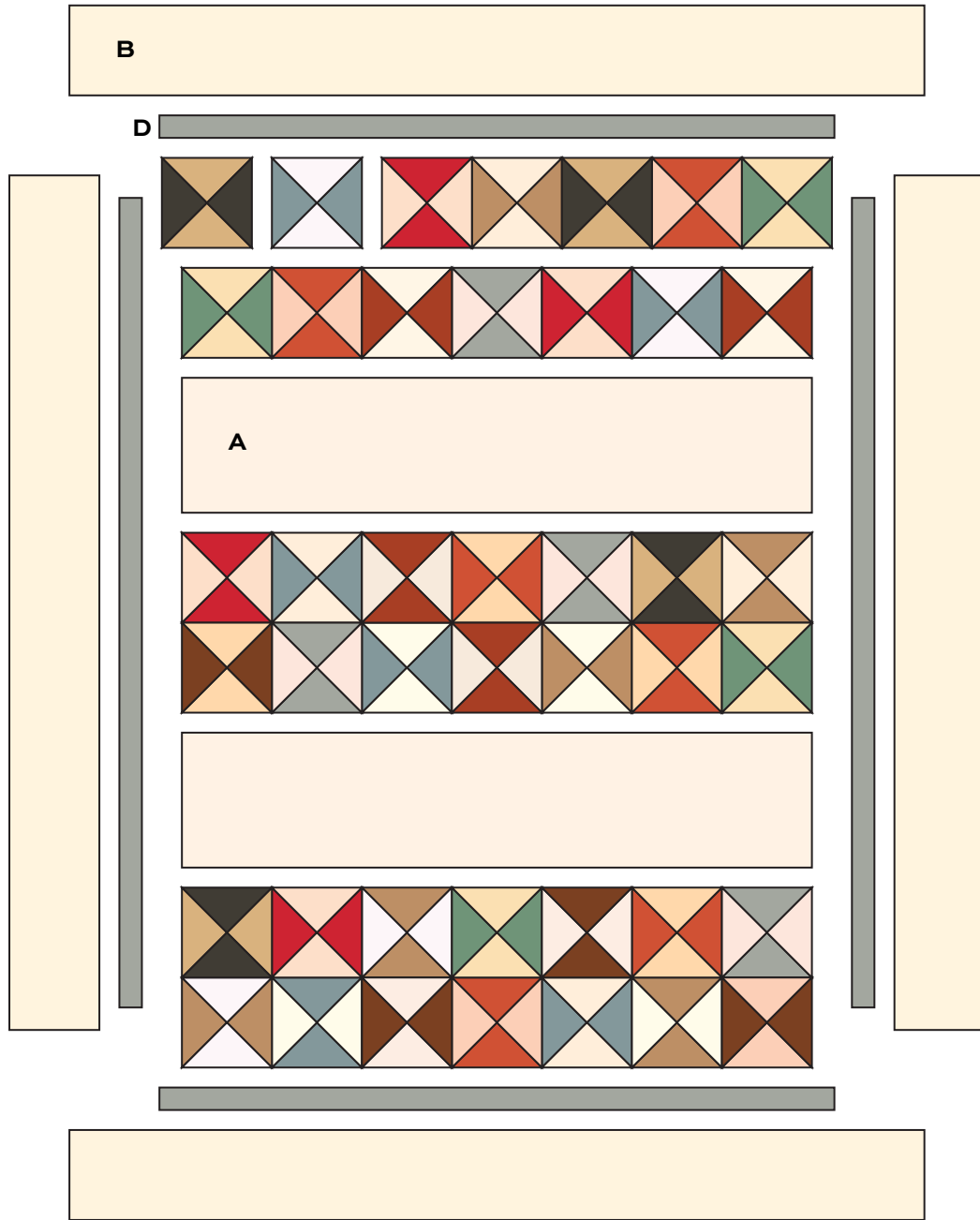
2. Arrange 7 blocks into a row, turning them as you wish. Join the blocks to make a row. Make a total of 6 rows.
3. Join 2 rows. Repeat to make 3 row units like this. Sew the Fabric A sashes between the row units as shown in the Quilt Diagram. Press the seam allowances toward the sashes.
4. Sew long Fabric D borders to the sides and short borders to the top and bottom. Repeat to add Fabric B borders.

## Finishing the Quilt

5. Layer the quilt with batting and backing and baste. Quilt in the ditch around borders and block patches. Quilt the sashes and borders as desired. Bind to finish the quilt.

# Broken Dishes Quilt

---



Quilt Diagram



# Little House on the Prairie Walnut Grove



BY KATHY HALL



7953-N



7953-R



7953-T



7954-N



7954-RN



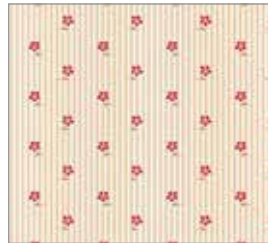
7954-TK



7923-L



7955-N



7956-N



7957-NR



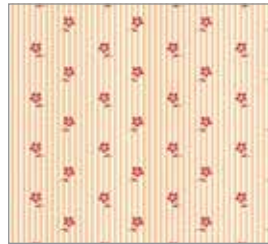
7958-NL



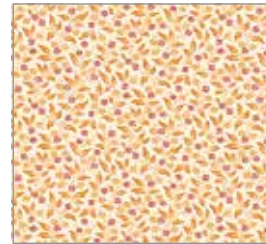
7924-L



7955-R



7956-RL



7957-RO



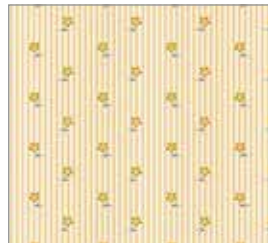
7958-RL



7925-L



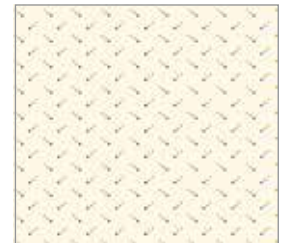
7955-T



7956-TL



7957-TK



7958-TL



7982-L



7982-R

All fabrics are used in quilt pattern. Fabrics shown are 25% of actual size.

andover

•  
• makower uk  
• *The Henley Studio*  
•

Free Pattern Download Available

1384 Broadway New York, NY 10018  
Tel. (800) 223-5678 • andoverfabrics.com