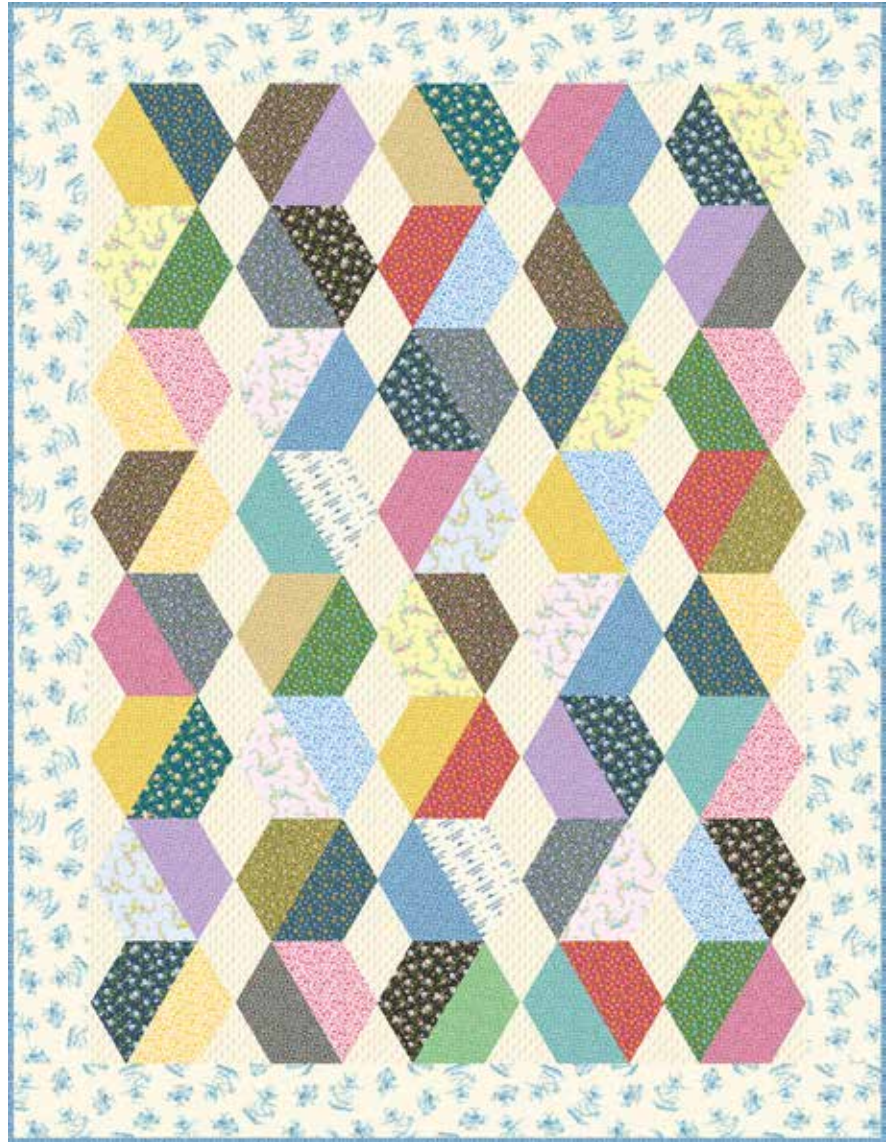


# Little House on the Prairie® Prairie Flowers

BY KATHY HALL



Basket of Eggs Quilt  
designed by: **Jean Ann Wright**  
Quilt Size: **56¼" x 74"**  
[andoverfabrics.com](http://andoverfabrics.com)



LITTLE HOUSE ON THE PRAIRIE® and associated character names and trademarks are owned and licensed by Friendly Family Productions, LLC. All rights reserved. ©2015 Friendly Family Productions, LLC

andover



makower uk  
*The Henley Studio*

Free Pattern Download Available

1384 Broadway New York, NY 10018  
Tel. (800) 223-5678 • [andoverfabrics.com](http://andoverfabrics.com)

# Basket of Eggs Quilt



Introducing Andover Fabrics new collection:

Little House on the Prairie® – PRAIRIE FLOWERS by Kathy Hall

Quilt designed by Jean Ann Wright

Quilt finishes 54¼" x 74"

*Chains of hexagons are separated by diamonds in this easier-than-it-looks scrap quilt. There are no difficult seams to sew, and because of the oversized hexagons, this throw-size quilt goes together quickly.*

## Fabric Requirements

		Yardage	Fabric
<b>10" Squares Packet</b>	hexagons	1 packet	
<b>Fabric A</b>	border	2 yards	7924-B
<b>Fabric B</b>	background	1½ yards	7926-L
<b>Fabric C</b>	binding	⅝ yard	7949-B
<b>*Backing</b>		3¾ yards	7982-B

## Cutting Directions

**Note:** Read assembly directions before cutting patches. All measurements are cut sizes and include ¼" seam allowances. Borders are cut the exact lengths required plus ¼" seam allowances. WOF designates the width of fabric from selvedge to selvedge (approximately 42" wide).

### 10" Squares Packet

See Step 1

### Fabric A

Cut (2) side borders 5½" x 64½", cut lengthwise

Cut (2) top/bottom borders 5½" x 56¾" cut lengthwise

### Fabric B

Cut (64) triangles

Cut (16) half triangles

Cut (16) half triangles reversed

### Fabric C

Cut (7) strips binding 2½" x WOF

### Backing

Cut (2) panels 41" x 65", pieced to fit quilt top with overlap on all sides

## Making the Quilt

1. Cut each of the 10" squares in half. Join 2 different halves together to make a pieced unit that is 9½" x 10". Repeat with all the patches, making combinations of your choosing, or refer to the Quilt Diagram and photograph for color ideas. Make 40 pieced units.
2. Make templates of the 3 full-size patterns. Position the complete hexagon template on top of a pieced unit, aligning the points of the hexagon with the seam (Diagram 1). Mark around the hexagon and cut along the lines. Repeat to make 40 pieced hexagons.

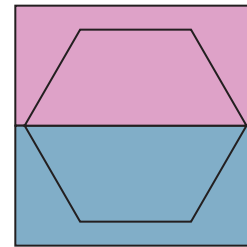


Diagram 1

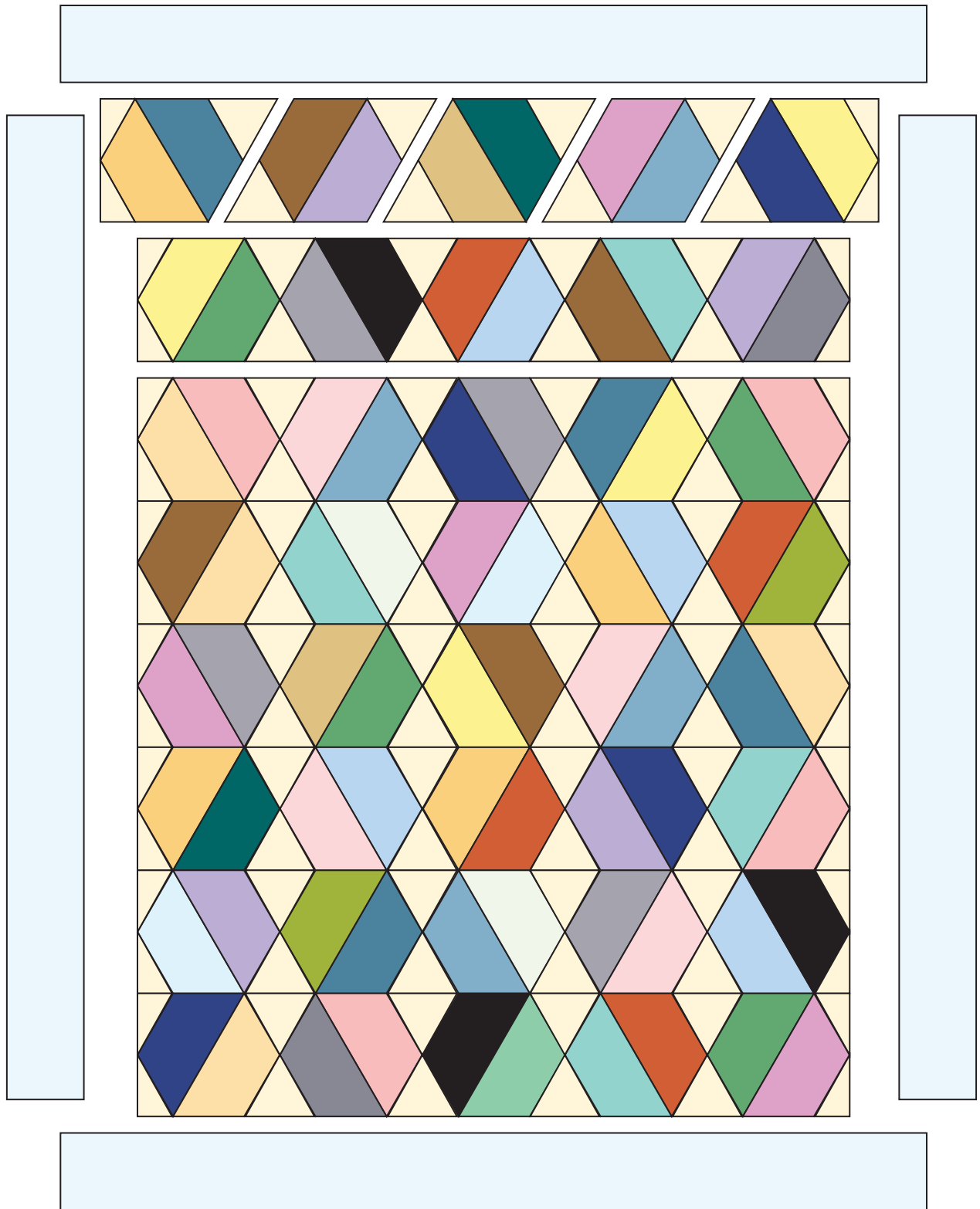
3. Referring to the Quilt Diagram, arrange 5 hexagons and 8 triangles into a horizontal row. Be sure to rotate the hexagons as shown to ensure the zigzag effect. Sew a triangle to 2 opposite sides of each hexagon. Press the seam allowances toward the hexagons. Join the hexagons into a row, being careful to match seams. Sew a half triangle and a reversed half triangle on each end to complete the row.
4. Make 8 rows, rotating the hexagons as shown. Press seam allowances between the rows open. Join the rows.
5. Sew long borders to the sides. Sew short borders to the top and bottom.

## Finishing the Quilt

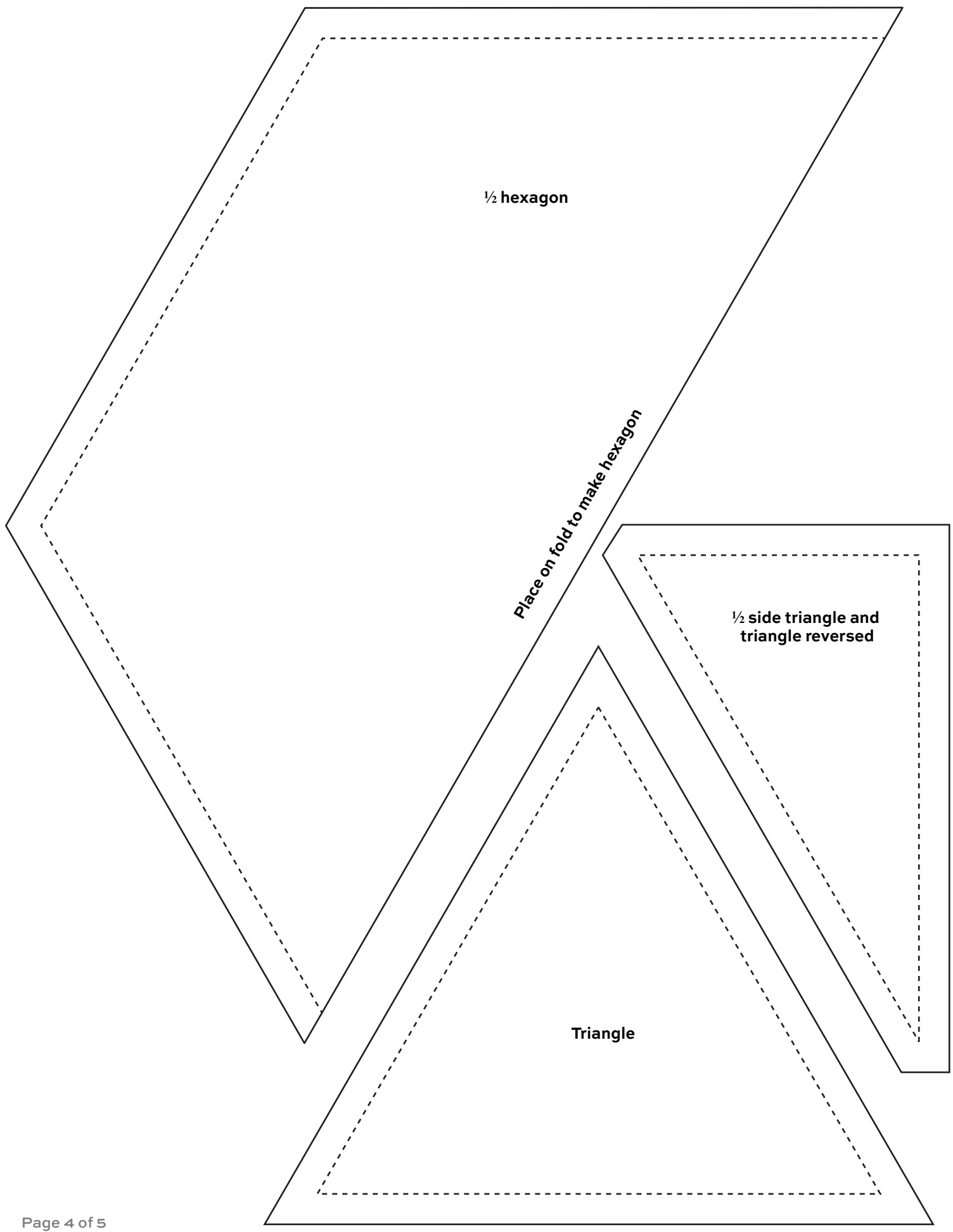
6. Layer the quilt with batting and backing and baste. Quilt an overall design or quilt as you wish. Bind to finish the quilt.

# Basket of Eggs Quilt

---



**Quilt Diagram**



**1/2 hexagon**

*Place on fold to make hexagon*

**1/2 side triangle and  
triangle reversed**

**Triangle**

# Little House on the Prairie Prairie Flowers



BY KATHY HALL



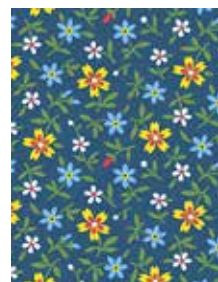
7950-C



7947-B



7948-B



7951-B



7952-B



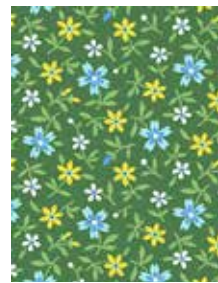
7950-E



7947-K



7948-R



7951-G



7952-K



7950-Y



7947-N



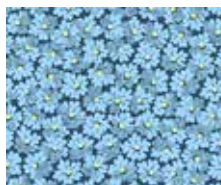
7948-Y



7951-R



7952-T



7949-B



7949-E



7949-G



7949-K



7926-L



7924-B



7949-N



7949-P



7949-T



7949-Y



7982-B



7924-B

All fabrics used in quilt pattern. Fabrics shown are 50% of actual size.