

Heritage Hollow

Evening Star Quilt

by Kim Diehl



Finished Quilt Size: 64½" x 64½"
A Free Project Sheet from



Henry Glass & Co., Inc.



49 West 37th Street, New York, NY 10018
tel: 212-686-5194 • fax: 212-532-3525
Toll-free: 800-294-9495
www.henryglassfabrics.com

facebook

Evening Star Quilt

(See page 3 for alternate color option)

Finished quilt size: 64½" x 64½" ✧ Finished block size: 12" x 12"

Materials

2½ yards of black paisley print for blocks and border (6319-99)
¾ yard of green stripe for blocks and appliqués (6315-66)
⅝ yard of black geometric print for binding (6316-99)
½ yard of gold sunburst print for blocks and appliqués (6320-40)
½ yard of gold vine print for blocks and appliqués (6318-40)
1 fat quarter (18" x 22") each of 19 assorted prints for blocks and appliqués (6313-33, 66, 77; 6314-11, 55; 6315-88; 6316-30; 6317-55, 66, 77; 6318-11, 88; 6319-22, 30, 33, 66; 6320-88; 6321-30, 88)
4 yards of backing print of your choice (Kim suggests red vine print 6318-88) or 2 yards of 108"-wide backing print of your choice (Kim suggests tan Prairie Vine print 6235-44)
71" x 71" square of batting
Bias bar to make a ⅜" stem
Liquid glue for fabric, water-soluble and acid-free
Supplies for your favorite appliqué method
Standard quilting supplies

Cutting

Please cut all pieces across the width of the fabric in the order given unless otherwise noted.

From the lengthwise grain of the black paisley print, cut:

4 strips, 8½" x 46½"

From the remainder of the black paisley print, cut:

96 squares, 2½" x 2½"

4 squares, 8½" x 8½"

8 rectangles, 1½" x 7½"

4 squares, 1⅞" x 1⅞"; cut each square in half diagonally once to yield 8 triangles

Vine base

From the assorted print fat quarters, the green stripe, the gold sunburst print, and the gold vine print, cut:

16 sets of 3 matching squares, 4⅞" x 4⅞", for the block corners (combined total of 48); cut each square in half diagonally once to make two triangles (6 triangles per block; combined total of 96). Keep the squares organized by print and reserve the remainder of the prints.

From the original prints referenced in the cutting step above and the remainder of the reserved prints, cut:

16 sets of 3 matching squares, 4⅞" x 4⅞", for the center diagonal portion of each block (combined total of 48); cut each square in half diagonally once to make two triangles (6 per block; combined total of 96) and 6 squares, 2½" x 2½". Keep the pieces organized by print and reserve the remainder of the prints.

From the reserved green stripe, cut:

Enough 1¼"-wide bias strips to make four 70" lengths when joined end to end.

16 bias strips, 1¼" x 3½"

From the reserved gold sunburst print, cut:

16 star appliqués

From the reserved gold vine print, cut:

4 squares, 5½" x 5½"

4 squares, 1⅞" x 1⅞"; cut each square in half diagonally once to yield 8 triangles

Reserve the scraps for the appliqués.

From the remainder of the assorted print fat quarters, the scraps of the green stripe, and the scraps of the gold vine print, cut a combined total of:

88 leaf appliqués

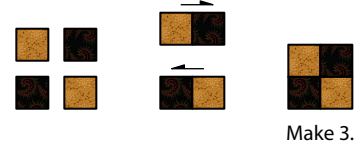
16 star center appliqués

Piecing the Blocks

Sew all pieces with right sides together and a ¼" seam allowance unless otherwise noted.

1. Select one set of six matching triangles for the block corners, one set of matching pieces from a different print for the diagonal center portion of the block (six triangles and eight 2½" squares), and six black paisley 2½" squares.

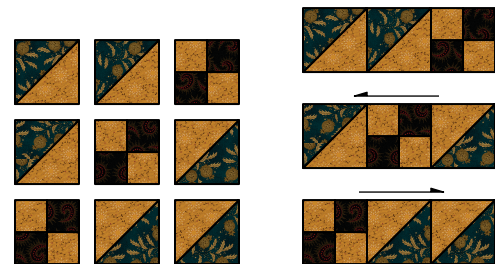
2. Lay out two black 2½" squares and two #2 center diagonal portion squares in two horizontal rows to make a four-patch unit. Join the squares in each row. Press the seam allowances toward the black print. Join the rows. Press the seam allowances to one side. Repeat for a total of three pieced four-patch units measuring 4½" square, including the seam allowances.



3. Join a triangle from each print along the long diagonal edges. Press the seam allowances toward the block corner print. Trim away the dog-ear points. Repeat for a total of six pieced half-square-triangle units measuring 4½" square, including the seam allowances.



4. Lay out the pieced four-patch units and the half-square-triangle units in three horizontal rows as shown. Join the units in each row. Press the seam allowances of each row in alternating directions. Join the rows. Press the seam allowances in one direction. The pieced block should measure 12½" square, including the seam allowances.



5. Repeat steps 1–4 to make a total of 16 pieced blocks.

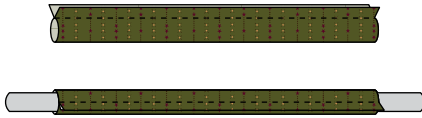
Piecing the Quilt Center

Using the pictured quilt as a guide, lay out the blocks in four horizontal rows to form the quilt center, rotating the blocks so the seam allowances nest. Join the blocks in each row. Press the seam allowances open. Join the rows. Press the seam allowances open. The pieced quilt center should now measure 48½" square, including the seam allowances.

Preparing the Vines

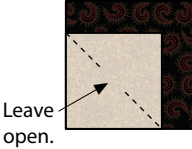
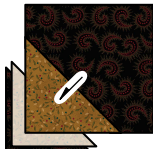
1. Reserving the green stripe 1¼" x 3½" bias strips, join the remaining lengths of green stripe 1¼"-wide strips end to end to make four strips measuring 70" long. Press the seam allowances to one side, all in the same direction.

2. With *wrong* sides together, use a *scant* $\frac{1}{4}$ " seam allowance to stitch along the long raw edges of each pieced 70" strip and the remaining $3\frac{1}{2}$ " strips.
3. Insert the bias bar into each resulting tube to press it flat, with the seam allowances centered and positioned to one side (not open) so they will be hidden from the front. Apply small dots of liquid fabric glue at approximately $\frac{1}{2}$ " intervals underneath the pressed seam allowances of each vine and stem. Use a hot, dry iron on the wrong side of the vines and stems to heat set the glue dots and anchor the seam allowances in place.





Piecing the Basket Units



1. Use a pencil and an acrylic ruler to draw a diagonal sewing line from corner to corner on the wrong side of each gold vine print $5\frac{1}{2}$ " square.
2. Layer a prepared gold square onto one corner of a black paisley print $8\frac{1}{2}$ " square as shown. Stitch the pair together along the drawn line, leaving an un-sewn portion at the block center, about 2" to 3" long to enable the vines to be added during the appliqué steps. Fold the inner gold triangle open, aligning the corner with the black print square; press. Trim away the excess layers beneath the top triangle, leaving a $\frac{1}{4}$ " seam allowance. Repeat to make a total of four pieced basket units measuring $8\frac{1}{2}$ " square, including seam allowances.

Make 4.
3. Join a black paisley print and a gold vine print $1\frac{1}{8}$ " triangle along the long diagonal edges. Press the seam allowances toward the black print. Trim away the dog-ear points. Repeat for a total of eight pieced half-square-triangle units measuring $1\frac{1}{2}$ " square, including seam allowances.

Make 8.
4. Join a pieced step 3 half-square-triangle unit to one end of a black $1\frac{1}{2}$ " x $7\frac{1}{2}$ " rectangle as shown. Press the seam allowances toward the rectangle. Repeat for a total of four pieced basket base units and four mirror-image basket base units. (These units will be joined to complete the basket block when the borders are assembled.)

Make 4 each.

Piecing and Appliquing the Border

1. Referring to the pictured quilt, join a pieced basket base and a pieced mirror-image basket base to each end of a black paisley $8\frac{1}{2}$ " x $46\frac{1}{2}$ " border strip. Press the seam allowances away from the basket bases. Repeat for a total of four pieced border strips.
2. Using the pictured quilt as a guide, lay out a prepared 70" vine and three prepared $3\frac{1}{2}$ " stems onto a pieced border strip from step 1, ensuring the raw stem ends are tucked well under the vine; baste or pin in place, stopping approximately 3" to 4" from each end to enable the border to be pieced when the quilt top is assembled.
3. Select and lay out 20 leaf appliqué and three star appliqué, overlapping them onto the vines and stems by at least $\frac{1}{4}$ " and trimming away any excess length. When you're pleased with the arrangement, pin or baste the pieces in place and use your favorite

method to stitch the appliqué to the border strip. Position, baste and stitch a center appliqué onto each star.

4. Repeat steps 2 and 3 to appliqué four border strips.

Joining the Border and Completing the Appliqué

1. Join an appliqué border strip to the right and left sides of the quilt center. Press the seam allowances toward the border. Using the pictured quilt as a guide, join a basket unit to each end of the remaining appliqué border strips, keeping the vine ends out of the seam. Press the seam allowances toward the borders. Join these pieced border strips to the remaining sides of the quilt center. Press the seam allowances away from the quilt center.
2. Referring to the pictured quilt, work from the bottom layer to the top to lay out, baste, and stitch the remaining appliqué to the border, tucking the vine ends into the opening of each basket unit. Stitch the open seams of the basket units. The completed quilt top should now measure $64\frac{1}{2}$ " square, including the seam allowances.

Completing the Quilt

Layer the quilt top, batting, and backing. Quilt the layers. Join the black geometric print $2\frac{1}{2}$ "-wide strips into one length and use it to bind the quilt.

Morning Star Quilt

For a little added sparkle, try this alternate color option, making the following changes:



- ✧ Add 4 assorted tan print fat quarters (6315-44; 6316-44; 6318-44; 6321-44) to the required materials. From *each* of the 4 tan print fat quarters, cut 8 squares, $4\frac{7}{8}$ " x $4\frac{7}{8}$ " (combined total of 32); cut each square in half diagonally to yield 2 triangles (combined total of 64), for the center diagonal portion of the blocks.
- ✧ From the assorted prints, the green stripe, the gold sunburst print, and the gold vine print, cut 16 sets of matching pieces for the block corners and four-patch units, with each set cut from the same print and consisting of 1 square, $4\frac{7}{8}$ " x $4\frac{7}{8}$ " (cut in half diagonally to make two triangles) and 6 squares, $2\frac{1}{2}$ " x $2\frac{1}{2}$ ". From the remainder of the prints, cut 16 sets of three matching squares, $4\frac{7}{8}$ " x $4\frac{7}{8}$ " (cut in half diagonally to make six triangles), for the block corners..
- ✧ For *each* block, substitute four matching tan print triangles for four of the center diagonal portion triangles called for in step 3 of "Piecing the Blocks" as shown above.

Heritage Hollow

Fabrics in the Collection



6313-11



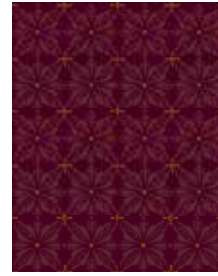
6313-66



6313-77



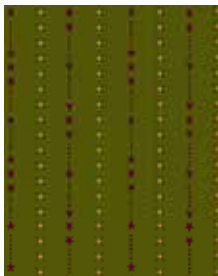
6314-11



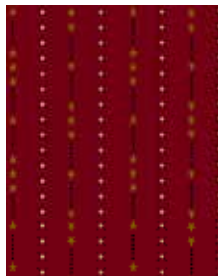
6314-55



6315-44



6315-66



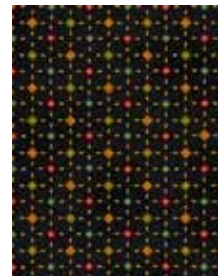
6315-88



6316-30



6316-44



6316-99



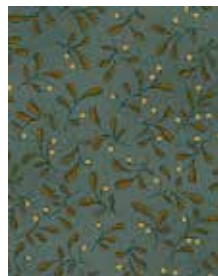
6317-55



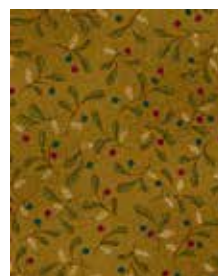
6317-66



6317-77



6318-11



6318-40



6318-44



6318-88



6319-22



6319-30



6319-33



6319-66



6319-99



6320-40



6320-88



6321-30



6321-44



6321-88