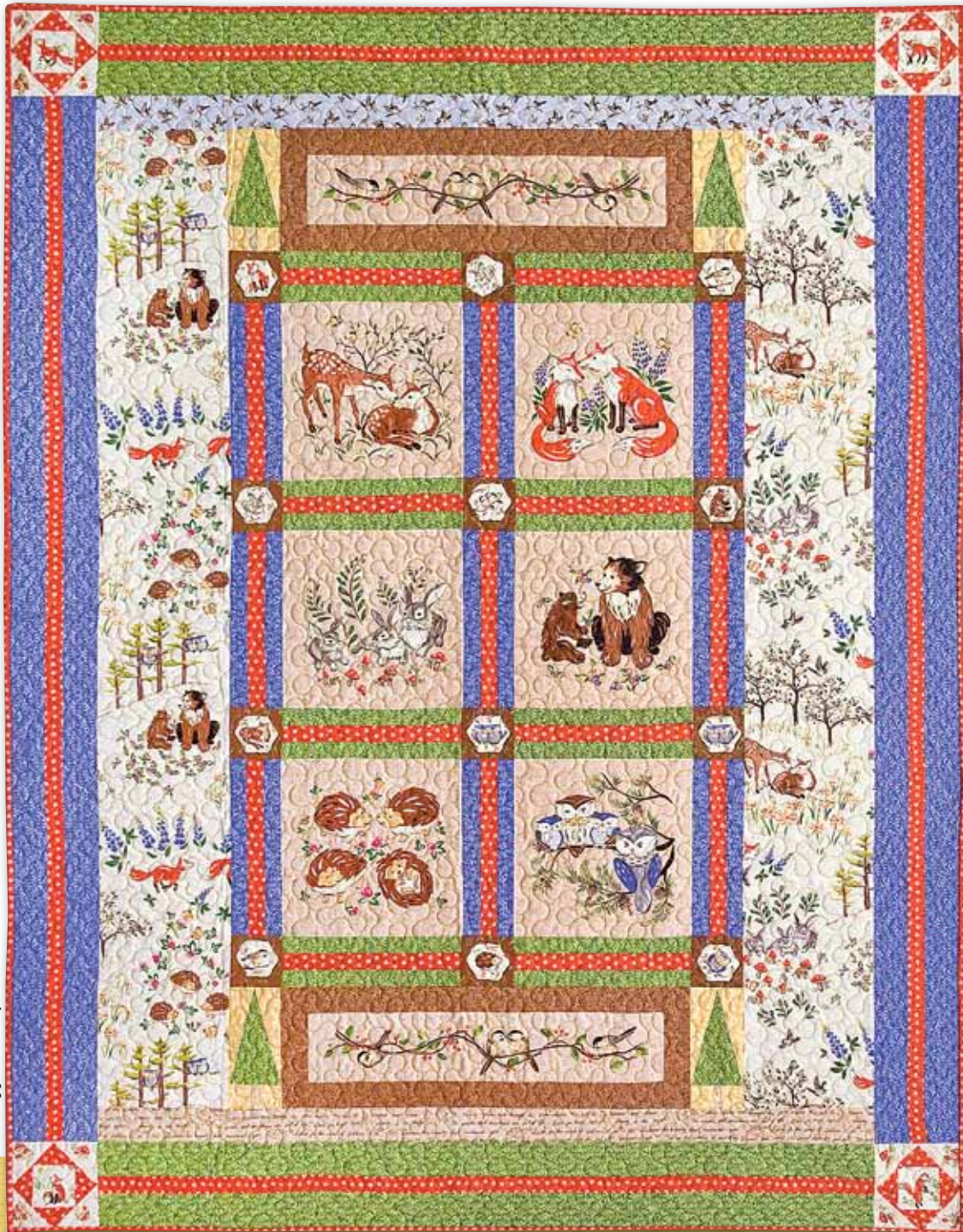


Forest Frolics

by Heidi Boyd

Quilt designed & pieced by June Pease • Machine quilted by Tracy Szanto



Quilt: approximately 52" x 64"

FABRIC REQUIREMENTS:

Yardages are based on 40" wide, unwashed fabric.

A. Pattern #25716 – MUL1	1 panel
B. Pattern #25717 – MUL1	1½ yards
C. Pattern #25718 – DKBRO1	½ yard
D. Pattern #25719 – LTBE11	¼ yard
E. Pattern #25720 – LTBLU1	¼ yard
F. Pattern #25721 – BE11	⅛ yard
G. Pattern #25722 – BE11	¼ yard
H. Pattern #25723 – CRE1	⅓ yard
I. Pattern #25724 – ORA1	1¼ yards
J. Pattern #25724 – YEL1	¼ yard
K. Pattern #25725 – GRE1	¾ yard
L. Pattern #25725 – BRO1	¼ yard
M. Pattern #25725 – BLU1	⅞ yard
Backing	4⅛ yards
Batting	60" x 72"

Additional supplies: see-through template plastic.

CUTTING INSTRUCTIONS:

Please read all instructions carefully before beginning. ¼" seam allowance is included in measurements and all strips are cut across the width of the fabric unless noted otherwise. Label pieces and keep together until ready to sew. WOF=width of fabric from selvage to selvage. LOF=length of fabric parallel to selvage.

A. Pattern #25716 – MUL1 (panel):

Note: Light beige background of panel will not be showing when sewn.

1. Fussy cut six large panels 9½" x 9½".
2. Fussy cut two chickadee panels 4½" x 20½".

B. Pattern #25717 – MUL1 (all over):

1. Cut two 8" x LOF strips.

C. Pattern #25718 – DKBRO1 (hex frames):

1. Using see through template material, make a 3½" square. Fussy cut twelve 3½" squares, centering an animal hexagon in each square.

D. Pattern #25719 – LTBE11 (foxes):

1. Using the 3½" square template, fussy cut four squares with a fox centered in each.

E. Pattern #25720 – LTBLU1 (chickadees):

1. Cut two 3" strips.

F. Pattern #25721 – BE11 (wood grain):

1. Cut one 1" strip. Sub-cut four 1" x 2" rectangles.

G. Pattern #25722 – BE11 (script):

1. Cut two 3" strips.

H. Pattern #25723 – CRE1 (mushrooms):

1. Cut the 3½" square template in half on one diagonal to make a 3½" triangle template. Fussy cut sixteen triangles with a mushroom centered in each.

I. Pattern #25724 – ORA1 (dots):

1. Cut one 3" strip. Sub-cut eight 3" squares. Cut the squares once on the diagonal (yields sixteen triangles).
2. Cut eleven 1½" strips.
3. Cut seven 2½" strips for binding.

J. Pattern #25724 – YEL1 (dots):

1. Cut one 6" strip. Sub-cut four 3" x 6" rectangles and eight 2" squares.

K. Pattern #25725 – GRE1 (leaves):

1. Cut four 1½" strips.
2. Cut five 2½" strips.
3. Cut one 4" strip. Sub-cut four 4" x 5" rectangles.

L. Pattern #25725 – BRO1 (leaves):

1. Cut four 1" strips. Sub-cut four 1" x 20½" strips and four 1" x 5½" strips.

M. Pattern #25725 – BLU1 (leaves):

1. Cut six 1½" strips.
2. Cut six 2½" strips.

PIECING INSTRUCTIONS:

A. Pine Tree Blocks:

Note: The Pine Tree blocks are paper pieced. Copy the pattern four times. Paper piece the blocks using your favorite method.

1. Each Pine Tree block is made with one F rectangle for the tree trunk, two 2" J squares and one 3" x 6" J rectangle for the background, and one 4" x 5" K rectangle for the tree.
2. The four 3" x 6" J rectangles must be cut into triangles. Stack two rectangles with wrong sides up and two rectangles with right sides up. Cut on diagonal from the bottom left corner to the top right corner of the rectangles to make four triangles for the left background and four triangles for the right background.
3. After paper piecing is completed, trim the blocks even with the outside line of the pattern. Blocks should measure 3½" x 5½".
4. Remove the paper only after sewing the Pine Tree blocks to the Chickadee blocks.

B. Square-in-a-Square Blocks:

Note: The Square-in-a-Square blocks are paper pieced. Copy the pattern four times. Paper piece the blocks using your favorite method.

1. Each Square-in-a-Square block is made with one 3½" D square, four 3½" H triangles, and four 3" I triangles.
2. After paper piecing is completed, trim the blocks even with the outside line of the pattern. Blocks should measure 5½" square.
3. Remove the paper only after sewing the blocks to the outer borders.

C. Sashing:

1. Make the green sashing strip sets as follows: Stitch together one 1½" K strip, one 1½" I strip and one 1½" K strip. Press seams toward the green fabric. Make a total of two strip sets. Sub-cut eight 3½" x 9½" rectangles for horizontal sashing.
2. Make the blue sashing strip sets as follows: Stitch together one 1½" M strip, one 1½" I strip, and one 1½" M strip. Press seams toward the blue fabric. Make a total of three strip sets. Sub-cut nine 3½" x 9½" rectangles for vertical sashing.

D. Chickadee Blocks: (Note: To accommodate changes to the panel pieces in manufacturing, the brown frames on the Chickadee blocks are now narrower than shown in the quilt photo.)

1. Sew two 1" x 20½" L strips to the top and bottom of the chickadee panel. Press seams toward the brown fabric.
2. Sew two 1" x 5½" L strips to the sides of the chickadee panel. Press seams toward the brown fabric. Block should measure 5½" x 21½".
3. Repeat to make a total of two blocks.

E. Side Borders:

1. Sew together six 2½" M strips. Press to one side. Sub-cut four 2½" x 56" strips.
2. Sew together three 1½" I strips. Press to one side. Sub-cut two 1½" x 56" strips.
3. Sew together Fabric M, Fabric I, and Fabric M. Press seams toward the blue fabric. Make a total of two border strips.

F. Top and Bottom Borders:

1. Sew together five 2½" K strips. Press to one side. Sub-cut four 2½" x 45" strips.
2. Sew together three 1½" I strips. Press to one side. Sub-cut two 1½" x 45" strips.
3. Sew together Fabric K, Fabric I, and Fabric K. Press seams toward the green fabric. Make a total of two border strips.

QUILT ASSEMBLY: Refer to the quilt diagram and photo.

A. Center Unit:

1. Assemble the rows:
 - a. Row 1: Pine Tree block, Chickadee block, Pine Tree block. Press seams toward Chickadee block. Repeat for Row 9.
 - b. Row 2: 3½" C square, 3½" x 9½" green sashing, C square, green sashing and C square. Press seams toward C. Repeat for Rows 4, 6, and 8.

c. Row 3: 3½" x 9½" blue sashing, 9½" A square, blue sashing, A square, and blue sashing. Press seams toward A squares. Repeat for Rows 5 and 7.

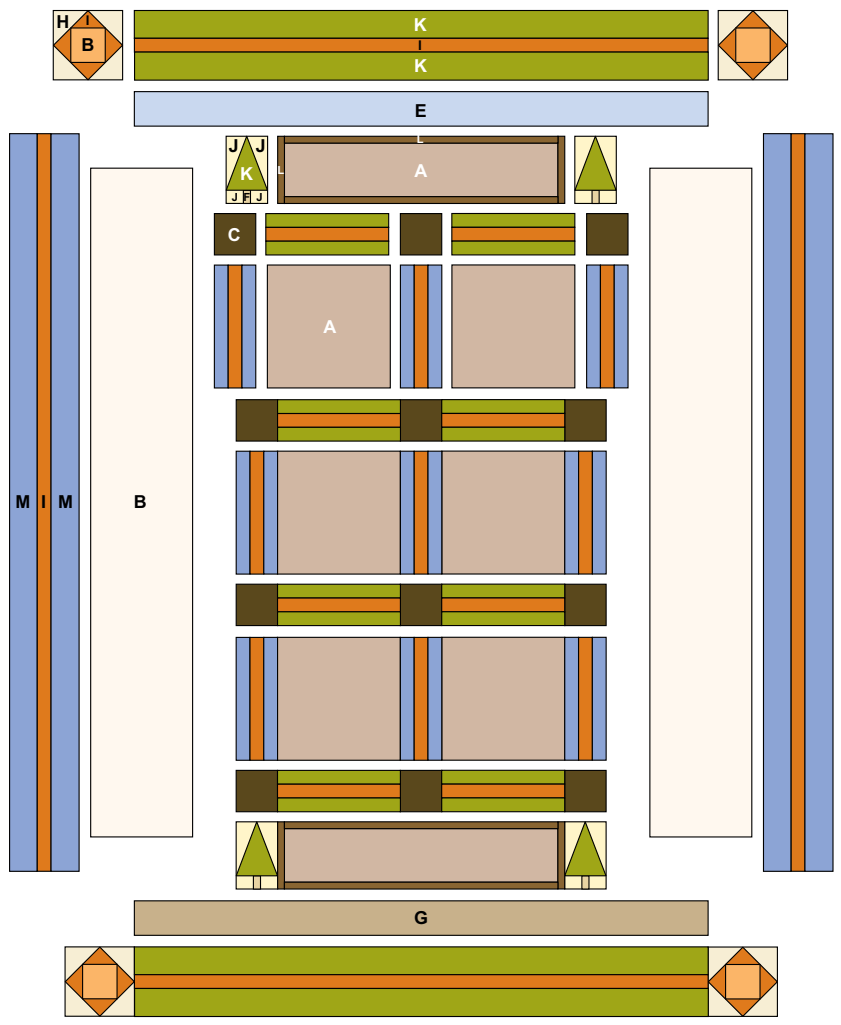
2. Sew the rows together. Press seams toward the sashing.
3. Trim 8" B strips equal to the length of the quilt center and sew to sides of the quilt center. Press seams toward B.
4. Sew two 3" E strips together. Trim E strip equal to the width of the quilt center and sew to the top. Press seam toward E.
5. Repeat step 4 with 3" G strips and sew to bottom of the quilt center. Press seam toward G.

B. Outer Border:

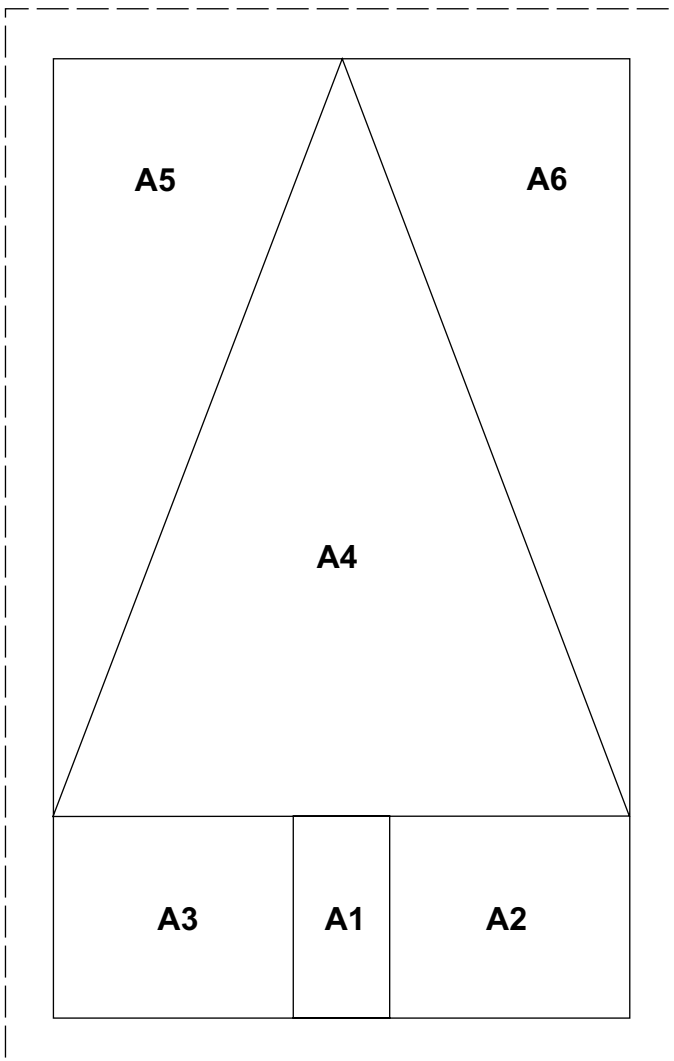
1. Trim the M/I/M borders equal to the length of the quilt. Trim the K/I/K borders equal to the width of the quilt.
2. Sew the M/I/M borders to the sides of the quilt. Press seams toward the borders.
3. Sew a Square-in-a-Square block to the ends of the trimmed K/I/K borders. Press seams toward the borders. Sew to the top and bottom of the quilt. Press seams toward the borders.

FINISHING:

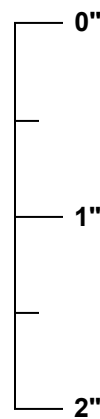
1. Prepare backing with a vertical seam to measure 60" x 72".
2. Layer backing, batting, and quilt top. Baste layers together.
3. Quilt as desired.
4. Trim layers even with top.
5. Join 2½" I binding strips with diagonal seams. Attach to quilt using your favorite method.
6. Make a label and sew to back of quilt.

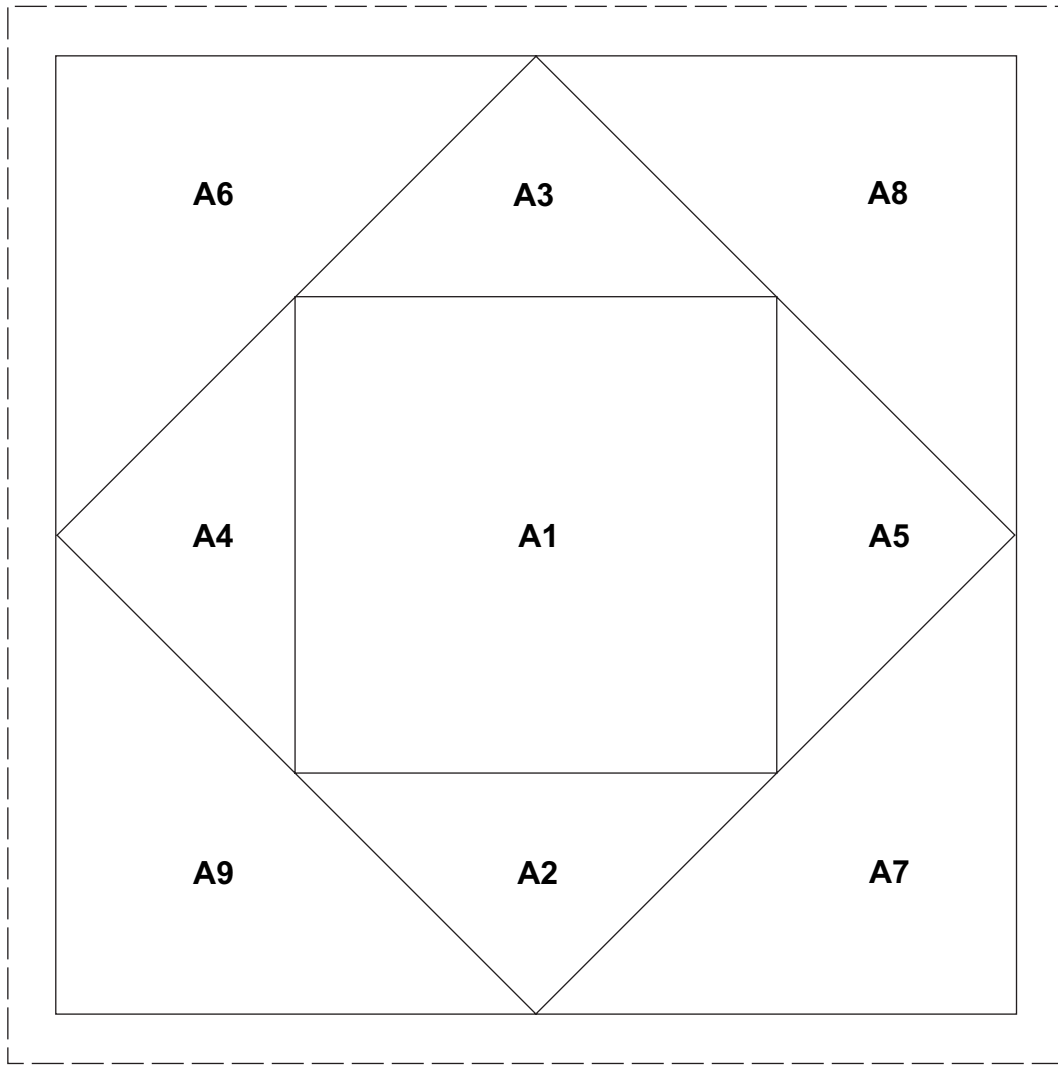


Quilt Diagram



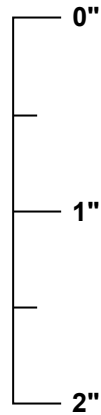
Scale Check for pdf files. When you print this template, this ruler should measure 2 inches long. If it does not, change, "page scaling" to "none" in the print dialog box.





Square-in-a-Square Paper-Piecing Pattern

Scale Check for pdf files. When you print this template, this ruler should measure 2 inches long. If it does not, change, "page scaling" to "none" in the print dialog box.



©2015 Red Rooster Fabrics. All rights reserved. Not intended for individual resale. The design for this Red Rooster Fabrics' pattern is protected by U.S. copyright law. Quilt stores: for additional copies of this pattern please call or write Red Rooster Fabrics at the address listed: 253 West 35th Street, 11th Floor, New York, NY 10001 800.742.2459 • www.redroosterfabrics.com

We take great care to ensure that the information included in our free pattern is accurate and presented in good faith. No warranty is provided nor results guaranteed. For your convenience, we post an up-to-date listing of corrections on our website: www.redroosterfabrics.com/Pattern Gallery/Oops! If a correction is not noted, please contact our customer service department at customerservice@redroosterfabrics.com. You may also call or write us at the address above.