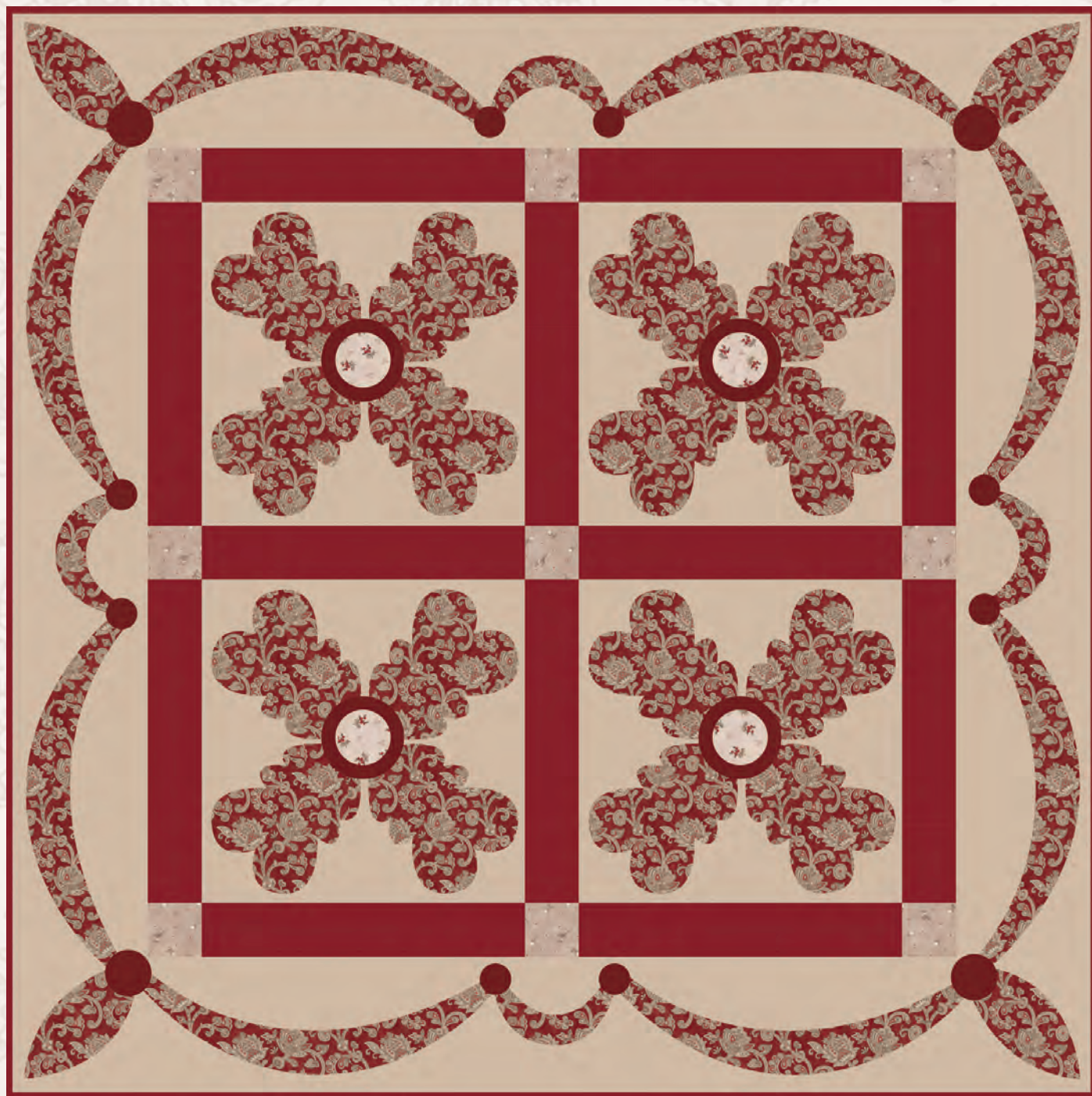


STROLL ALONG THE SEINE

By Mary Jane Carey



A Free Project Sheet From



Henry Glass & Co., Inc.



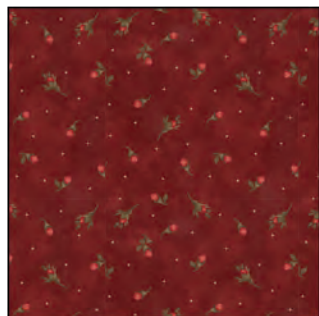
facebook

Finished Quilt Size: 40" x 40"
49 West 37th Street, New York, NY 10018
tel: 212-686-5194 fax: 212-532-3525
Toll Free: 800-294-9495
www.henryglassfabrics.com

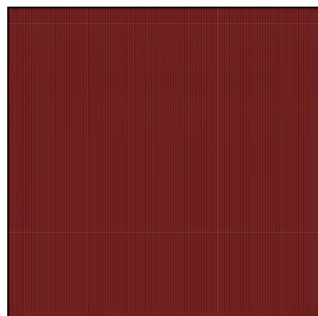
STROLL ALONG THE SEINE

Finished Quilt Size: 40" x 40"

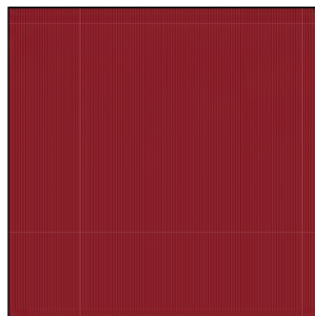
Fabrics in the Collection



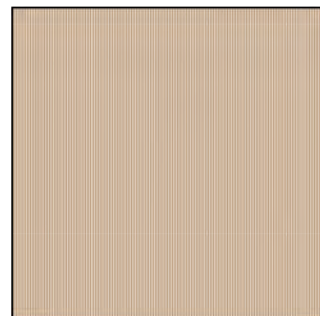
Tiny Paisley - Red
8284-88



Pin Stripe - Dk. Red
8276-89



Pin Stripe - Lt. Red
8276-88



Pin Stripe - Cream
8276-44



Petite Nosegay - Red
8275-88



Petite Nosegay - Cream/Red
8275-48



Petite Nosegay - Cream
8275-44



Tossed Buds - Cream
8274-44



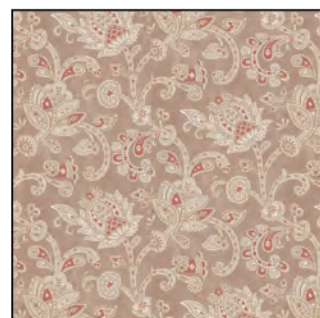
Tossed Buds - Taupe
8274-34



Jacobean Vine - Red
8273-88



Jacobean Vine - Cream
8273-44



Jacobean Vine - Taupe
8273-34



Floral Vine - Red
8272-88



Floral Vine - Cream
8272-44



Floral Vine - Taupe
8272-34

STROLL ALONG THE SEINE

Page 1

Materials

1 ¾ yards	Pin Stripe – Cream (A)	8276-44
1 ¾ yards	Jacobean Vine – Red (B)	8273-88
½ yard	Pin Stripe – Dk. Red (C)	8276-89*
⅛ yard	Tossed Buds – Taupe (D)	8274-34
⅛ yard	Petite Nosegay – Cream/Red (E)	8275-48
⅜ yard	Pin Stripe – Lt. Red (F)	8276-88
1 ⅔ yards	Jacobean Vine – Red (Backing)	8273-88

*Includes binding.

Cutting Instructions

Please note: all strips are cut across the width of fabric (WOF) from selvage to selvage edge unless otherwise noted.

From the Pin Stripe - Cream (A), cut:

- (2) 13 ½" x WOF strips. Sub-cut strips into (4) 13 ½" squares and (4) 6 ½" squares.
- (2) 6 ½" x 32" WOF strips.
- (2) 6 ½" x 32" strips from the length of fabric (LOF).

From the Jacobean Vine - Red (B), cut:

- See instructions to cut (4) flowers.
- See instructions to cut (8) large swags.
- See instructions to cut (4) small swags.
- See instructions to cut (4) corners.

From the Pin Stripe - Dk. Red (C), cut:

- See instructions to cut (4) large circles.
- See instructions to cut (4) medium circles.
- See instructions to cut (8) small circles.
- (5) 2 ½" x WOF strips for the binding.

From the Tossed Buds - Taupe (D), cut:

- (1) 2 ½" x WOF strip. Sub-cut the strip into (9) 2 ½" squares.

From the Petite Nosegay - Cream/Red (E), cut:

- See instructions to cut (4) center circles.

Pin Stripe - Lt. Red (F), cut:

- (4) 2 ½" x WOF strips. Sub-cut strips into (12) 2 ½" x 12 ½" strips.

From the Jacobean Vine - Red (Backing), cut:

- (1) 42" x WOF strip and (2) 6" x WOF strips for the backing. Sew the strips together and trim to make the 48" x 48" back.

You will also need:

- Fusible Web

Block Assembly

These instructions are written for fusible applique technique, please use the applique technique of your choice to assemble.

1. Refer to the manufacturer's instructions to trace the listed number of each template onto the paper side of the fusible web. Roughly cut out each shape outside the drawn lines.
2. Press each shape onto the back side of the fabrics as listed in the cutting instructions. Cut each shape out on the drawn lines.
3. Refer to the quilt photo to assemble and press the shapes onto the (4) 13 ½" Fabric A squares. Finish the raw edges of each shape with a decorative stitch such as a blanket or satin stitch. Trim each square to measure 12 ½" x 12 ½", centering the applique in the middle of the block.

Quilt Top Assembly

(Refer to the Quilt Photo while assembling.)

4. Sew together the (4) appliquéd blocks, (12) 2 ½" x 12 ½" Fabric F strips and (9) 2 ½" Fabric D squares together to make the quilt top.
5. Center and press the applique swags onto the (4) 6 ½" x 32" Fabric A strips, using the photo as a guide, to make the (4) border strips. Press the small circles as shown in the photo. Finish the edges of each shape.
6. Trim the border strips down to 5 ½" x 30 ½" strips.
7. Sew (1) border strip to each side of the quilt top. Refer to cover photo for placement. Press towards border.
8. Press and finish the corner shape to the center of each 6 ½" Fabric A squares. DO NOT applique circles until the borders are sewn onto the quilt top. Trim the corner blocks to 5 ½" square.
9. Sew (1) corner block to each end of the remaining (2) border strips. Refer to cover photo for placement. Press towards border piece. Sew these strips to the top and to the bottom of the quilt top.
10. Applique large circles as shown in the photo. These circles will cover where the swags and corner block appliques join. If needed, the circle can be made larger to cover your area.
11. Layer and quilt as desired.
12. Sew the (5) 2 ½" x WOF Fabric C strips together, end to end with 45-degree seams, to make the binding. Fold this long strip in half lengthwise with wrong sides together and press.
13. Bind as desired.

STROLL ALONG THE SEINE

Page 2

ENLARGE TEMPLATES 400%

