

WORDS

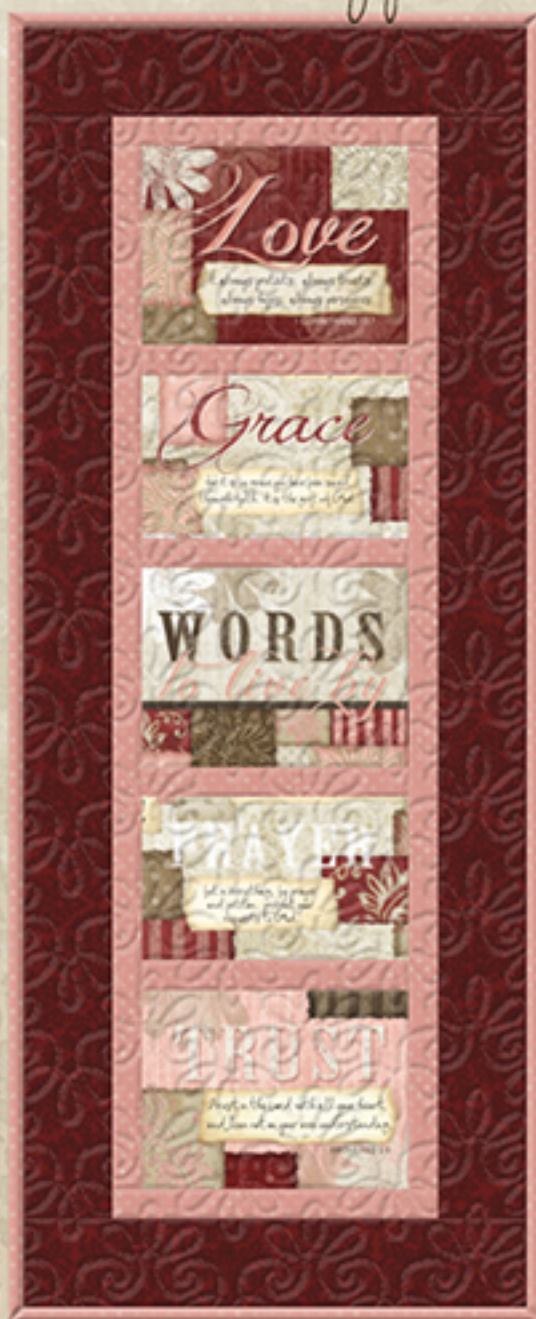
To Live By

by Jennifer Pugh

Trypic Wall Hanging



15" x 40"



17" x 43 1/4"



15" x 40"

Words *to live by*

Please read all instructions carefully AND identify all fabrics before beginning.

All instructions include a 1/4" seam allowance and strips are cut selvage to selvage, unless stated otherwise.

1. Cut the following for all 3 banners:

Fabric A - Referring to the quilt image, fussy cut 1/4" beyond outside edges of 7 panels to approximately 7-1/4" tall x 9-1/2" wide

Fabric B - Referring to the quilt image, fussy cut 6 rectangles from wide stripe to approximately 6" tall x 9-1/2" wide

Fabric C - Referring to the quilt image, fussy cut 2 rectangles 6" tall x 9-1/2" wide with words centered (Note: words will vary by cut of fabric)

Fabric D - Cut (7) 2-1/2" strips (binding)
Cut (6) 2" strips, subcut (4) 2" x 36" and (4) 2" x 13" strips
Cut (2) 1-1/2" strips, subcut (8) 1-1/2" x 10" strips

Fabric E - Cut (3) 3-1/2" strips, subcut (2) 3-1/2" x 37-3/4" and (2) 3-1/2" x 17-1/2" borders

Fabric F - Cut (6) 2-1/2" strips, subcut (4) 2-1/2" x 36-1/2" and (4) 2-1/2" x 15-1/2" borders

Fabric G - Cut (4) 2-1/2" strips (binding)
Cut (3) 2" strips, subcut (2) 2" x 37" and (2) 2" x 13" strips
Cut (1) 1-1/2" strip, subcut (4) 1-1/2" x 10" strips

2. Piecing Order for all 3 Banners:

1. Refer to Small and Large Banner Layouts (Page 2) for arrangement and placement of panels, rectangles, strips, and borders.

2. For Small Banner, arrange 2 **Fabrics A** panels, 3 **Fabric B** rectangles, and 4 **Fabric D** 1-1/2" x 10" strips in a vertical row. Center and sew pieces together. Trim sides even. Add **Fabric D** 2" x 36" strips to long sides. Trim strip ends even. Stitch **Fabric D** 2" x 13" strips to top and bottom. **Trim quilt center to 11-1/2" x 36-1/2" (unfinished).**

3. Sew **Fabric F** 2-1/2" x 36-1/2" borders to long sides. Add **Fabric F** 2-1/2" x 15-1/2" borders to top and bottom. Make a total of 2 Small Banner tops (15-1/2" x 40-1/2" unfinished).

4. For Large Banner, arrange 3 **Fabrics A** panels, 2 **Fabric C** rectangles, and 4 **Fabric G** 1-1/2" x 10" strips in a vertical row. Center and sew pieces together. Trim sides even. Add **Fabric G** 2" x 37" strips to long sides. Trim strip ends even. Stitch **Fabric G** 2" x 13" strips to top and bottom. **Trim quilt center to 11-1/2" x 37-3/4" (unfinished).**

5. Sew **Fabric E** 3-1/2" x 37-3/4" borders to long sides. Add **Fabric E** 3-1/2" x 17-1/2" borders to top and bottom to complete Large Banner top (17-1/2" x 43-3/4" unfinished).

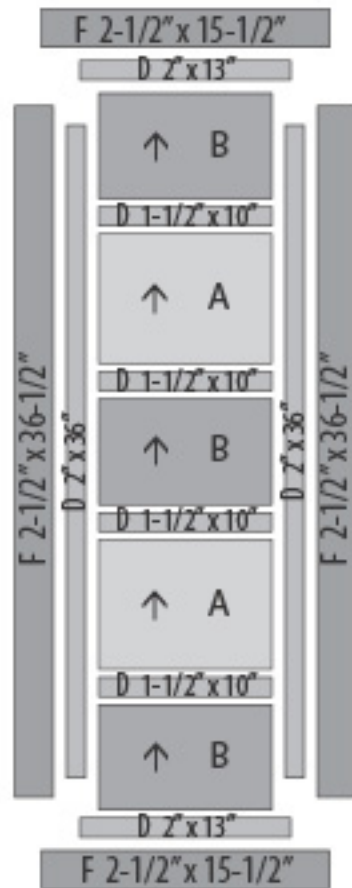
6. The large banner measures approximately 17-1/2" x 43-3/4" (unfinished). The small banners each measure approximately 15-1/2" x 40-1/2" (unfinished). Make backing (**Fabric C**) approximately 6" larger than the top. Backing for both small banners can be cut from one fabric width.

7. Layer and baste top, batting, and backing together. Quilt as desired. Attach binding (**Fabric G** for large banner, **Fabric D** for small banners) and enjoy!!

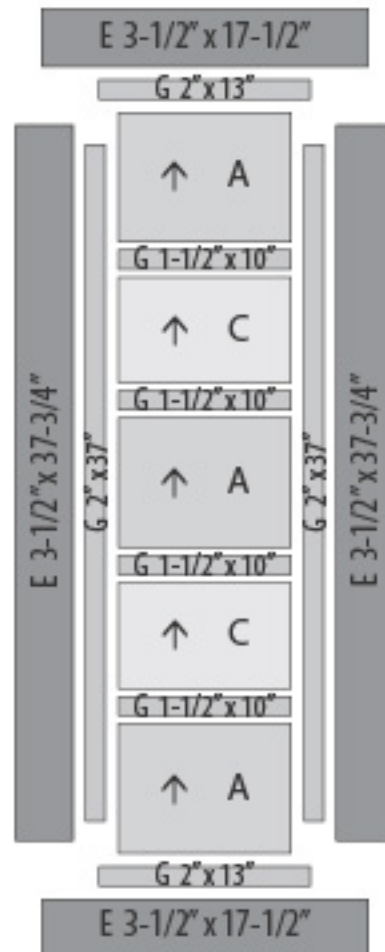
Words to live by

Arrows indicate orientation of directional prints.
Border measurements are the cut size.

SMALL BANNER LAYOUT



LARGE BANNER LAYOUT



21828

WORDS To Live By

by Jennifer Pugh



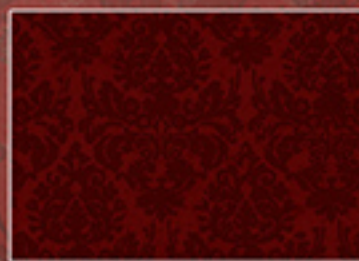
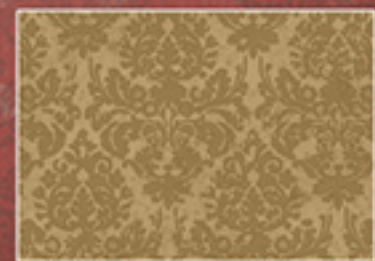
A 82450-132 (24" x 43" panel)
1 Panel (2/3 yard)



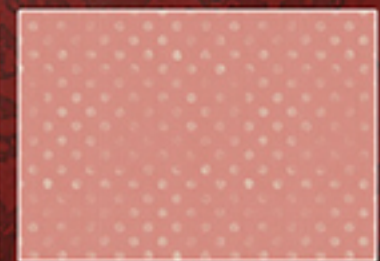
B 82451-231 (24" repeat)
2/3 yard



C 82452-132
piecing (p): 1/3 yard
backing (b): 2 7/8 yards



D 82454-222 E 82454-333
1 1/4 yards (incl. binding) 1/2 yard



F 82455-222 G 82455-311
5/8 yard 5/8 yard (incl. binding)