

Quilt design by Linda Fitch featuring fabrics
from the "Watercolor Palette" collection,
a part of the HOFFMAN SPECTRUM digital-print division

Finished Size 35 1/2" x 47"



Free pattern available from HoffmanFabrics.com

HOFFMAN SPECTRUM

This quilt uses only 5 fabrics!!

“Watercolor Palette”

a part of the HOFFMAN SPECTRUM digital-print division.

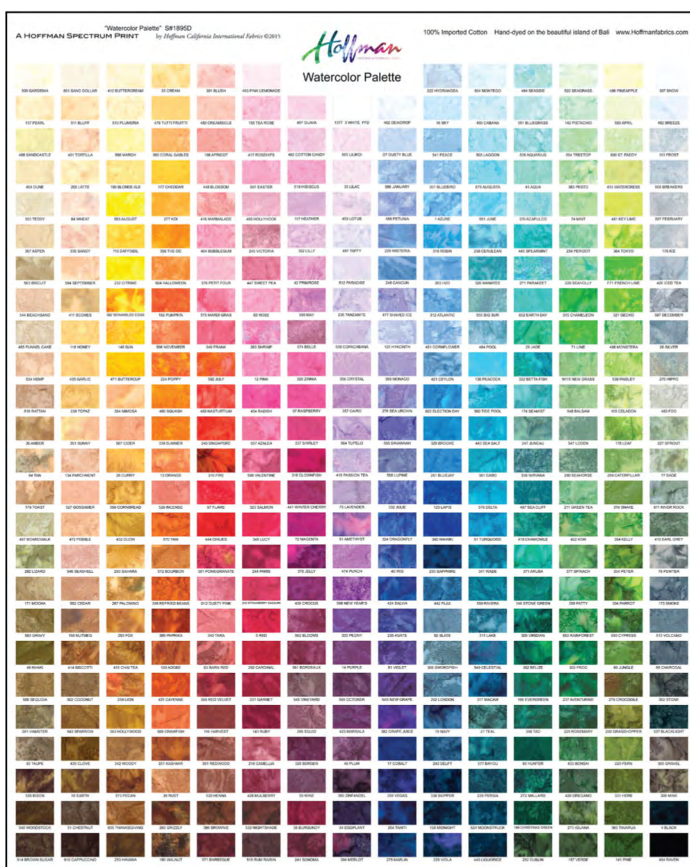
Quilt Design by Linda Fitch

Quilt Yardage Chart

A - 1895D	panel
B - 100-618-Zinc	$\frac{1}{4}$ yard
C - 1895-113-Frost*	$\frac{5}{8}$ yard
D - 1895-513-Volcano	$\frac{1}{2}$ yard
E - 1895-28-Silver	$\frac{1}{4}$ yard

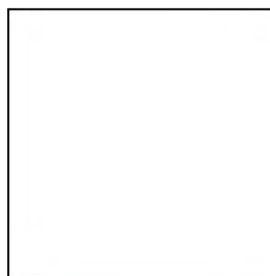
*Yardage includes binding.

BACKING: “Watercolor Palette” coordinate of your choice. 2 $\frac{1}{2}$ yards

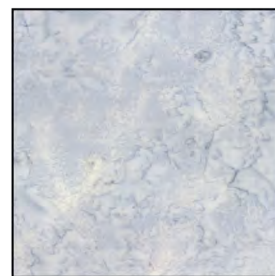


1895D

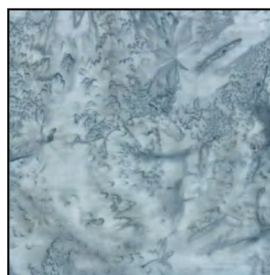
Scaled Down to 10% of Actual Size



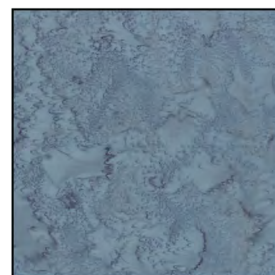
100
618-Zinc



1895
113-Frost



1895
28-Silver



1895
513-Volcano

View swatches and download quilt patterns at
HoffmanFabrics.com

Watercolor Palette Quilt

featuring the Watercolor Palette digital-print panel (Style #1895D)
by Hoffman California Fabrics

Quilt design by Linda Fitch

Quilt instructions by Linda Ambrosini

Finished size 34 by 45 ½"

¼ inch seam allowances

This great modern quilt uses a Hoffman Watercolor Palette panel that adds a rainbow of color, with extremely simple piecing. You will need to be very careful when cutting the panel into strips as there is no waste. Just take your time and think about how simple the piecing will be!!!

Fabric Requirements:

1	Hoffman Watercolor Palette panel
¼ yd	Solid White (Hoffman Style #100 618-Zinc)
5/8 yd	Light Gray (Hoffman Style # 1895 113-Frost), includes binding.
½ yd	Medium Gray (Hoffman Style #1895 28-Silver)
¼ yd	Dark Gray (Hoffman Style # 1895 513-Volcano)

Fabric Cutting:

NOTE: Due to the layout of the Watercolor Palette panel we will be cutting using eighth inches. Usually quilters cut at the quarter inch marks, but to maximize the color chart usage we will need to change our thinking. Take your time lining up your ruler!

Solid White

Cut 1 strip 6 7/8 inches by WOF (width of fabric)
Sub cut into 20 – 1 5/8 inch by 6 7/8 inch rectangles

Light Gray

Cut 1 strip 6 7/8 inches by WOF
Sub cut 24 – 1 5/8 inch by 6 7/8 inch rectangles
Sub cut 1 – 1 ¾ inch by 6 7/8 inch rectangle, then cut into 3 - 1 ¾ inch squares. Cut 4 strips 2 ¼ inches by WOF, these will be used as the binding.

Medium Gray

Cut 2 strips 6 7/8 inches by WOF

Sub cut 48 – 1 5/8 inch by 6 7/8 inch rectangles

Sub cut 2 – 1 3/4 inch by 6 7/8 inch rectangles, then cut into 6 - 1 3/4 inch squares

Dark Gray

Cut 1 strip 6 7/8 inch by WOF

Sub cut 24 – 1 5/8 inch by 6 7/8 inch rectangles

Sub cut 1 - 1 3/4 inch by 6 7/8 inch rectangle, then cut into 3 – 1 3/4 inch squares

Cutting:

We will first cut our color chart into horizontal rows. To do this, align your ruler with the bottom of the lettering of the color chips. Do not leave any white below the lettering. Cut through only one layer of fabric to make sure your alignment is true over the entire row. I started at the top; cut right below the words GARDENIA, SAND DOLLAR and all the way across through SNOW. For this first row you will cut below the letters and then a second cut above the color chips making one long strip 1 5/8 inch by the width of the color chart. For the following rows this 1 5/8 inch dimension will already be established with each cut. Now cut your second row right at the bottom of the words, PEARL, BLUFF through BREEZE. Continue to cut the remaining rows.

This quilt uses groups of 3 colors in each block. The rows you have just cut will be grouped into sets of three. The sets will measure 6 7/8 inches in length. The first row you cut from above, GARDENIA, SAND DOLLAR and BUTTERCREAM will make up the first grouping. Cut halfway between the BUTTERCREAM and CREAM chips. Then go back and cut the 6 7/8 inch length outside the GARDENIA chip. The next grouping will be CREAM, BLUSH and PINK LEMONADE. Are you seeing the pattern???

While you are cutting the groupings it would be wise to start organizing yourself. I use plastic sandwich bags. Check the following chart. This quilt consists of 12 large blocks in a 3 x 4 setting. The top left block would be Block #1, the top row would consist of blocks 1, 2, and 3. The bottom right block would be Block #12. Each block has 5 parts, 4 pieces sections and a small single fabric center square. There are 4 pieces sections, let's call them A, B, C, and D. A is the top left, B the top right, C the bottom left, and finally, D as the bottom right. Can you see how the pieced sections are just twisted in different directions around the center square?

Once you recognize the pattern, label your bags for each of your blocks 1- 12. Include your cut background fabrics and the color groupings needed for each block. The color names listed on the chart are those of the first color listed on the left of your set of 3 colors you cut in the last step. This is really easy to do as you are cutting as they somewhat follow in order. For example section A of block #1 would use 2 – dark grey background strips, 2 color chip strips (the ones starting with GARDENIA and CREAM, and 1- Solid white strip.

Block construction:

Now that you are cut and organized this will be a cinch! Let's construct Block #1. All the blocks are constructed in the same manner, they just use different background fabrics and color groupings, per the chart.

From the chart I know that Block #1 uses the darkest grey as the background fabric. First let's sew section A. Pull out the color chip grouping that starts with GARDENIA and sew to a strip of the dark gray background fabric. Then add a second color grouping. It will start with the CREAM color chip. Add another dark grey strip and finally add a solid white strip. Press your seam allowances in one direction; pressing direction is not an issue. Section A is now complete. Construct and press sections B, C, and D. The unfinished size of this block is 5 5/8 inches by 6 7/8 inches.

Lay out Block #1 by twisting the different sections per the quilt's color photo. The sections are twisted in different directions. Be aware that in Block #4, section D is actually upside down. The 1 3/4 inch background square goes in the center of the block to fill in that empty space. This block will be sewn with a partial seam. Align the background square to the bottom, right hand corner of section A. Sew just half of the background square to section A (a partial seam) Press the seam allowance towards section A. Now sew the seam along section B to section A and the background square. Press towards B. Next join section D to section B and the background square. Press. Join section C to the seam that was just sewn between section D and the background square. This leaves an open seam between section C and A. Complete this seam and press. Block #1 is now complete. Sew the remaining 11 blocks.

Sew the blocks together into rows, blocks 1, 2, and 3 make the top row. There will be 4 rows with the bottom row containing blocks 10, 11, and 12. Sew the rows together.

Quilt bind and enjoy.

Block 1

A
GARDENIA
CREAM
Solid white

dark background

B C
PEARL TEDDY
SANDCASTLE ASPEN
DUNE BISCUIT

D
KOI
THE OC
HALLOWEEN

Block 2

A
TUTTI FRUITI
CORAL GABLES
CHEDDAR

medium background

B C
GUAVA HEATHER
COTTON CANDY LILLY
HIBISCUS PRIMROSE

D
AZURE
ROBIN
H2O

Block 3

A
SKY
PEACE
BLUEBIRD

light background

B C
Solid white MINT
SEAGRASS PERIDOT
HYDRANGEA SEAHOLLY

D
PISTACHIO
TREETOP
PESTO

Block 4

A
RATTAN
AMBER
TAN

bkg mid

B C
HEMP BEACHSAND
Solid white FUNNEL CAKE
Solid white Solid white

D
SQUASH
SUMMER
ORANGE

Block 5

A
PUMPKIN
NOVEMBER
POPPY

bkg light

B C
MAY RASPBERRY
BELLE SHIRLEY
ZINNIA CLOWNFISH

D
ELECTION DAY
BROOKE
BLUEJAY

Block 6

A
SEAHORSE
Solid white
Solid white

bkg mid

B C
CHAMELEON ATLANTIC
LIME CORNFLOWER
NEW GRASS CEYLON

D
Solid white
BALSAM
LODEN

Block 7

A
REFRIED BEANS
Solid white
Solid white

bkg light

B C
TOAST MOCHA
BOARDWALK GRAVY
LIZARD KHAKI

D
Solid white
PAPRIKA
ADOBE

Block 8

A
INCENSE
YAM
BOURBON

bkg mid

B C
WINTER CHERRY CROCUS
MAGENTA BLOOMS
JELLY BORDEAUX

D
FLAX
SLATE
SWORDFISH

Block 9

A
WAIKIKI
SAPPHIRE
Solid white

bkg dark

B C
GREEN TEA
KIWI RAINFOREST
SPINACH FROG

D
Solid white
Solid white
LAPIS

Block 10

A
RUST
Solid white
GRIZZLY

bkg mid

B C
SEQUOIA
HAMSTER
TAUPE

BISON
WOODSTOCK
BROWN SUGAR

D
Solid white
Solid white
WALNUT

Block 11

A
CAYENNE
CRAWFISH
KASHMIR

bkg dark

B C
VINEYARD
SQUID
BERGEN

WINE
BURGUNDY
SONOMA

D
SKIPPER
MIDNIGHT
VIOLA

Block 12

A
OREGANO
Solid white
Solid white

bkg mid

B C
ADVENTURE
ROSEMARY
BONSAI

LONDON
NAVY
DELFT

D
Solid white
IGUANA
VERDE