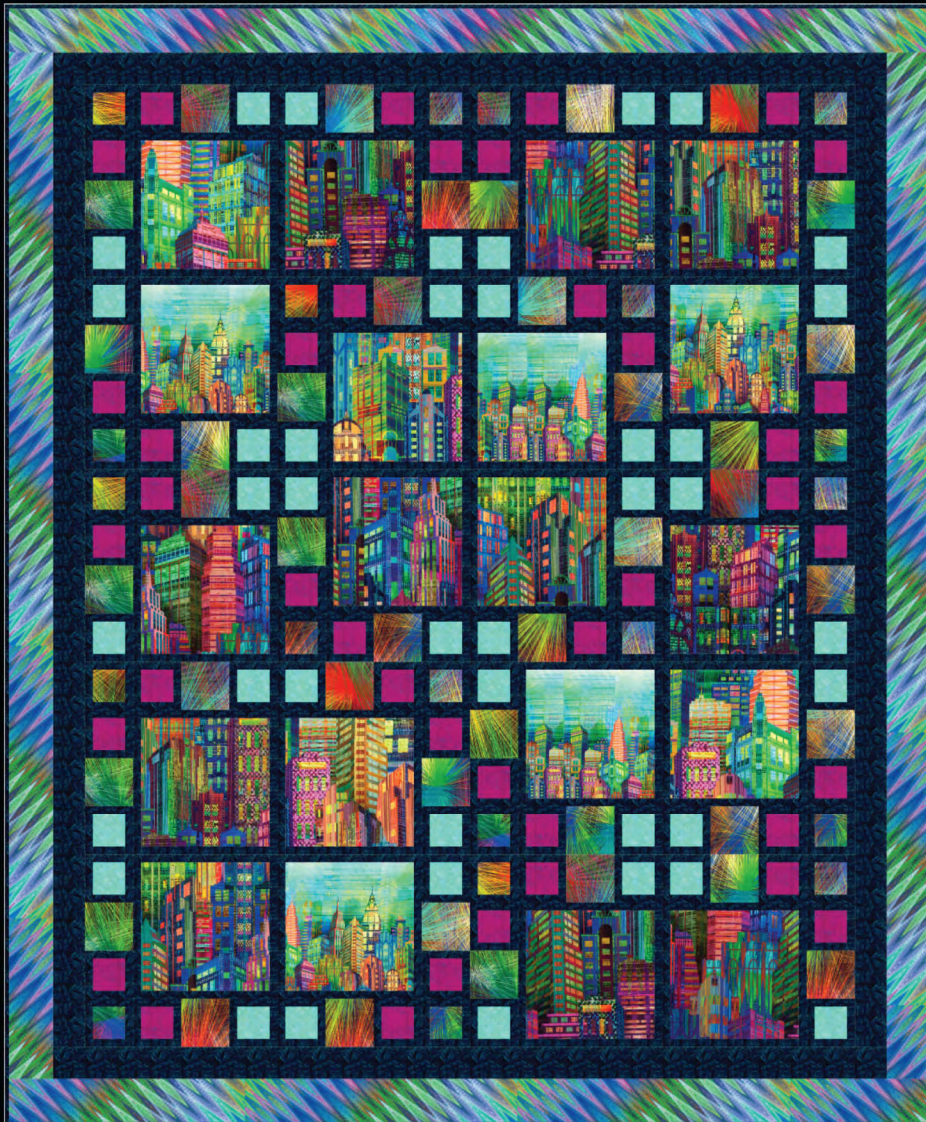


Quilt design by Larene Smith of The Quilted Button featuring fabrics from the "Skyline Sensation" collection, a part of the HOFFMAN SPECTRUM digital-print division

Finished Size 58" x 70"



Free pattern available from HoffmanFabrics.com

HOFFMAN SPECTRUM

“Skyline Sensation”

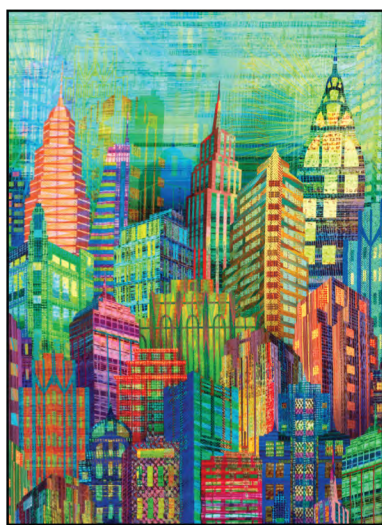
a part of the HOFFMAN SPECTRUM digital-print division.
Quilt Design by Larene Smith

Quilt Yardage Chart

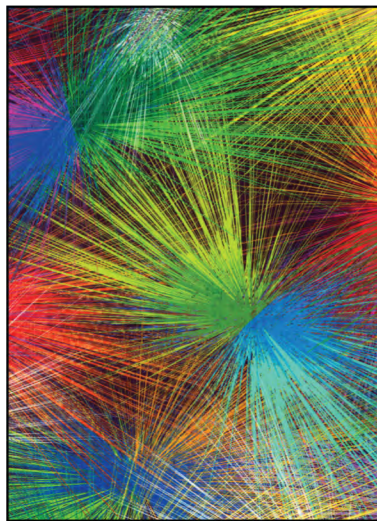
Fabrics	
A - N4234-130-Multi	1 ½ yards
B - N4235-130-Multi	⅝ yard
C - N4236-130-Multi	⅞ yard
D - 1895-524-Moonstruck*	2 ⅝ yards
E - 1895-72-Magenta	⅓ yard
F - 1895-370-Acapulco	⅓ yard

NOTE: These are estimated yardages. Final yardages will be on pattern.
*Yardage includes binding.

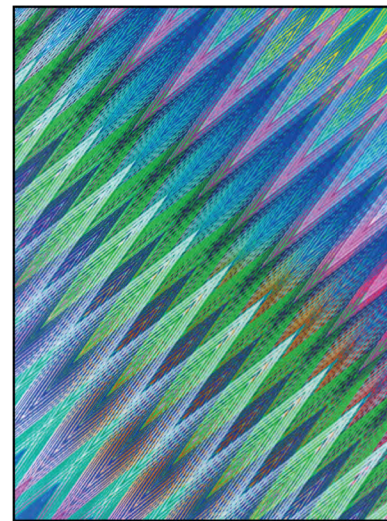
BACKING: “Skyline” coordinate of your choice. 4 yards (1 kit); 48 yards (12 kits)



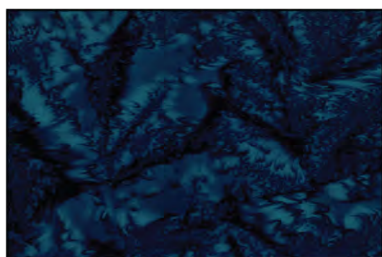
N4234
130-Multi



N4235
130-Multi



N4236
130-Multi



1895
524-Moonstruck



1895
72-Magenta



1895
370-Acapulco

View swatches and download quilt patterns at
HoffmanFabrics.com

Fabric Requirements

1-1/3 Yards	Fabric A – Skyline (N4234-130 Multi)
5/8 Yard	Fabric B (N4235-130 Multi)
7/8 Yard	Fabric C (N4236-130 Multi)
2-5/8 Yards	Fabric D (1895-524 Moonstruck)
1/3 Yard	Fabric E (1895-72 Magenta)
1/3 Yard	Fabric F (1895-370 Acapulco)
4 Yards	Backing
64" x 76"	Batting

General Information

- Pre-wash and starch all fabrics before cutting if desired.
- All seams are sewn with a 1/4" seam allowance.
- Read all instruction before beginning the project.
- WOF = Width of Fabric – Selvage to Selvage
- Press seams open as much as possible to decrease bulk.
- Finished Blocks are 12" x 12".
- Label all pieces when cut for easier construction.

Instructions

Step 1 – Cutting the Fabric

1. Fabric A (Skyline) – Cut (5) strips at 8-1/2" x WOF – Sub-cut each strip into (4) 8-1/2" squares as this will allow for a little bit of fussy cutting so that each block is different – Cut a total of (20) 8-1/2" squares.
2. Fabric B – Cut as follows:
 - a. Cut (4) strips at strips at 3-1/2" x WOF – Sub-cut into (40) 3-1/2" squares.
 - b. Cut (2) strips at 2-1/2" x WOF – Set C.
3. Fabric C – Cut (8) strips at 3-1/4" x WOF – Join all the strips at the 3-1/4" edge then sub-cut into (2) 3-1/4" x 64-1/2" rectangles (Left and Right Sides) and (2) 3-1/4" x 58" rectangles (Top and Bottom) – Outer Border. *Note: There is enough strips to allow for fussy cutting the selvages off so that you can align the seams when joining.*
4. Fabric D – Cut as follows:
 - a. Cut (1) strip at 8-1/2" x WOF – Sub-cut into (40) 1" x 8-1/2" rectangles – Focus Set.
 - b. Cut (1) strip at 9-1/2" x WOF – Sub-cut into (40) 1" x 9-1/2" rectangles – Focus Set.
 - c. Cut (16) strips at 1" x WOF – Set A, B, and C.
 - d. Cut (5) strips at 3-1/2" x WOF – Sub-cut into (200) 1" x 3-1/2" rectangles – Set A, B, and C.
 - e. Cut (6) strips at 2-1/2" x WOF – Join all the strips at the 2-1/2" edge – Sub-cut into (2) 2-1/2" x 60-1/2" rectangles (Left and Right Sides) and (2) 2-1/2" x 52-1/2" rectangles (Top and Bottom) – Inner Border.
5. Fabric E – Cut (3) strips at 2-1/2" x WOF – Set A.
6. Fabric F – Cut (3) strips at 2-1/2" x WOF – Set B.

Finished Blocks

Block A



Block B



Block C



Block D



Note: Refer to the Finished Blocks as a guide as all blocks are sewn the same way except that the “SKYLINE” focus print changes direction.

Step 2 – Preparing the Sets and Focus Square

Set A

7. Sew (1) Fabric D 1” x WOF strip to (1) Fabric E 2-1/2” strip then sew (1) more Fabric D 1” x WOF strip to the opposite edge to measure 3-1/2” x WOF – Make (3) new strips – Sub-cut into (40) 2-1/2” x 3-1/2” rectangles.
8. Sew (1) Fabric D 1” x 3-1/2” rectangles to the remaining two edges to make a square at 3-1/2” – Make (40) – Label “Set A” as illustrated in Example A – set aside for use later.

Example A
Set A



Set B

9. Sew (1) Fabric D 1” x WOF strip to (1) Fabric F 2-1/2” strip then sew (1) more Fabric D 1” x WOF strip to the opposite edge to measure 3-1/2” x WOF – Make (3) new strips – Sub-cut into (40) 2-1/2” x 3-1/2” rectangles.
10. Sew (1) Fabric D 1” x 3-1/2” rectangles to the remaining two edges to make a square at 3-1/2” – Make (40) – Label “Set B” as illustrated in Example A – set aside for use later.

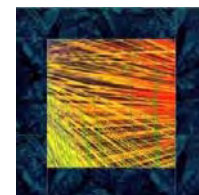
Set B



Set C

11. Sew (1) Fabric D 1” x WOF strip to (1) Fabric B 2-1/2” strip then sew (1) more Fabric D 1” x WOF strip to the opposite edge to measure 3-1/2” x WOF – Make (2) new strips – Sub-cut into (20) 2-1/2” x 3-1/2” rectangles.
12. Sew (1) Fabric D 1” x 3-1/2” rectangles to the remaining two edges to make a square at 3-1/2” – Make (20) – Label “Set C” as illustrated in Example A – set aside for use later.

Set C



Focus Square

13. Sew (1) Fabric D 1” x 8-1/2” rectangle to the left and right sides of (1) Fabric A 8-1/2” square then sew (1) 9-1/2” x 1” rectangle to the top and bottom to finish the set at 9-1/2” square – Label “Focus Set” – Make (20) and set aside for use later.

Example B
Part 1



Step 3 – Sewing Sets A, B, and C Together

14. Sew the following pieces together as follows to measure 9-1/2” x 3-1/2” from left to right as illustrated in Example B “Part 1” – Set A, Fabric B 3-1/2” square, Set B – Make (20) – Label “Part 1” and set aside for use later.
15. Sew the following pieces together as follows to measure 12-1/2” x 3-1/2” from left to right as illustrated in Example B “Part 2” – Set B, Fabric B 3-1/2” square, Set A, Set C – Make (20) – Label “Part 2” and set aside for use later.

Part 2



Step 4 – Sewing the Blocks

Note: Always refer to the illustrations of the FINISHED BLOCKS as a guide.

16. Block A – Sew (1) “Part 1” to the left side with Set B towards the bottom to (1) “Focus Square” to measure 12-1/2” x 9-1/2”, then sew (1) “Part 2” to the TOP with Set B towards the right to finish the block at 12-1/2” square – Make (6) – Label “Block A” and set aside for use later.
17. Block B – Sew (1) “Part 1” to the right side with Set B towards the bottom to (1) “Focus Square” to measure 12-1/2” x 9-1/2”, then sew (1) “Part 2” to the top with Set B towards the left to finish the block at 12-1/2” square – Make (6) – Label “Block B” and set aside for use later.

18. Block C – Sew (1) “Part 1” to the left side with Set B towards the top to (1) “Focus Square” to measure 12-1/2” x 9-1/2”, then sew (1) “Part 2” to the bottom with Set B towards the right to finish the block at 12-1/2” square – Make (4) – Label “Block C” and set aside for use later.
19. Block D – Sew (1) “Part 1” to the right side with Set B towards the top to (1) “Focus Square” to measure 12-1/2” x 9-1/2”, then sew (1) “Part 2” to the bottom with Set B towards the left to finish the block at 12-1/2” square – Make (4) – Label “Block D” and set aside for use later.

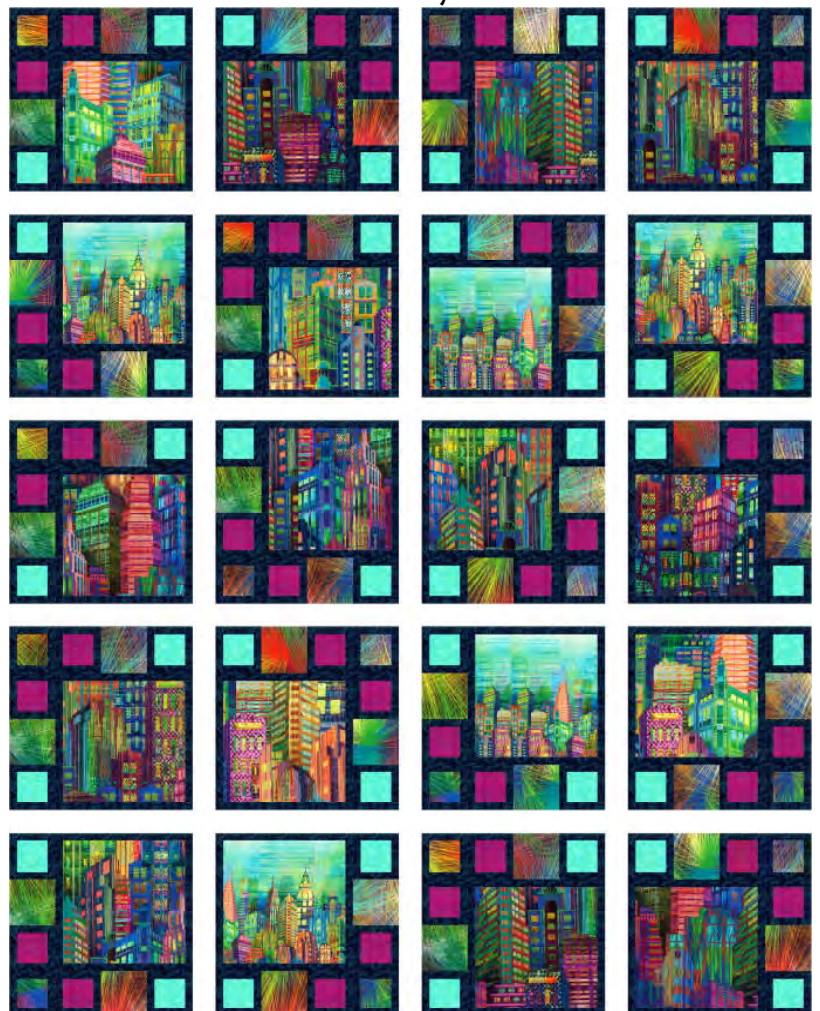
Step 5 – Sewing the Blocks Together

20. Sew (4) blocks together to make a row – there are (5) rows which will measure 48-1/2” x 12-1/2” as follows – refer to the illustration in Example C for the Block Layout when sewing the rows together:
 - a. Row 1 – Block A, Block B, Block A, Block B
 - b. Row 2 – Block C, Block A, Block B, Block D
 - c. Row 3 – Block A, Block C, Block D, Block B
 - d. Row 4 – Block A, Block B, Block C, Block D
 - e. Row 5 – Block C, Block D, Block A, Block B
21. Sew the rows together to finish the center at 48-1/2” x 60-1/2”.

Step 6 – Adding the Borders

22. Sew (1) Fabric D 2-1/2” x 60-1/2” rectangle to the left and right sides, then sew (1) Fabric D 52-1/2” x 2-1/2” rectangle to the top and bottom to finish the Inner Border at 52-1/2” x 64-1/2”.
23. Sew (1) Fabric C 3-1/4” x 64-1/2” rectangle to the left and right sides, then sew (1) Fabric C 58” x 3-1/4” rectangle to the top and bottom to finish the quilt top at 58” x 70”.

Example C
Block Layout



Step 7 – Finishing the Quilt

24. Layer the backing, batting, and quilt top and quilt as desired.
25. Using Fabric G cut (8) strips at 2-1/2” x WOF – Join all the strips together at the 2-1/2” edge then sew on the binding to finish the quilt.