



Quilt designed by: Sue Harvey and Sandy  
Boobar of Pine Tree Country Quilts  
Finished quilt size: 26" x 26"  
Finished block size: 6½" x 6½"  
Number of blocks: 9



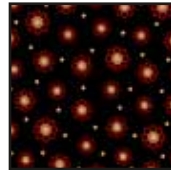
23820 ER



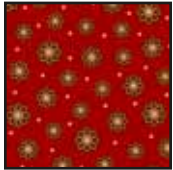
23821 H



23821 S



23822 J



23822 R



23823 E



23823 F



23823 S

FABRIC REQUIREMENTS	
Design	Yards
23820 ER	1/2
23821 H	3/8
23821 S	1/3
23822 J	3/4
23822 R	1/4
23823 E	3/8
23823 F	1/4
23823 S	1 1/8

## Cutting Directions

WOF = *Width of fabric from selvage to selvage.*

### 23820 ER - Border Stripe

- Fussy-cut (4) 7" x 7" squares with a large sunflower centered in each square, beginning by cutting 1/4" above the red checkerboard squares at the top of the sunflower.

### 23821 H - Light Green Sunflowers

- Cut (4) 2 1/2" x WOF strips; recut into (2) 2 1/2" x 22 1/2" strips and (2) 2 1/2" x 26 1/2" strips for outer border.

### 23821 S - Yellow Sunflowers

- Cut (1) 7 3/8" x WOF strip; recut into (2) 7 3/8" squares and (1) 3 3/4" square.

### 23822 J - Black Print

- Cut (1) 5 3/8" x WOF strip; recut into (4) 5 3/8" squares. Cut (2) 2 1/8" x 20" strips from remainder of strip; recut 1 strip into (4) 2 1/8" squares.
- Cut (4) 1 1/8" x WOF strips; recut into (4) 1 1/8" x 22 1/2" strips for decorative flange strips.
- Cut (4) 2 1/4" x WOF strips for binding.

### 23822 R - Red Print

- Cut (1) 3 3/4" x WOF strip; recut into (4) 3 3/4" squares.

### 23823 E - Cream Tonal

- Cut (2) 2 1/8" x WOF strips; recut into (1) 2 1/8" x 20" strip, (4) 2 1/8" x 3 3/4" rectangles and (8) 2 1/8" squares.
- Cut (3) 1 3/4" x WOF strips; recut into (2) 1 3/4" x 20" strips and (2) 1 3/4" x 22 1/2" strips for inner border.

### 23823 F - Dark Green Tonal

- Cut (1) 4 1/8" x WOF strip; recut into (4) 4 1/8" squares and (8) 2 1/8" squares. Cut the 4 1/8" squares in half diagonally to make 8 triangles.

### 23823 S - Gold Tonal (Backing Fabric)

- Cut (1) 34" x 34" square.

## Sunflower Blocks

*Note: Use a 1/4" seam allowance for all stitching.*

1. Draw a diagonal line on the wrong side of the 2 1/8" cream and dark green squares.
2. To make the wall quilt, place marked dark green squares right sides together on the top corners of a 7" sunflower square and marked cream squares on the bottom corners. Pin to hold. Stitch on the marked lines. Trim seam allowance to 1/4". Press the dark green and cream triangles open to complete (1) 7" x 7" Top Sunflower block. In the same manner make 1 Bottom Sunflower block, 1 Left Sunflower block and 1 Right Sunflower block, placing the dark green and cream squares on the correct corners of each block as shown in the diagrams.

Wall Quilt Sunflower Blocks — Make 1 of Each



Top Sunflower



Bottom Sunflower    Left Sunflower    Right Sunflower

3. To make the topper, complete 4 Bottom Sunflower blocks referring to step 2, using marked dark green squares on the bottom corners of (4) 7" sunflower squares and marked cream squares on the top corners.

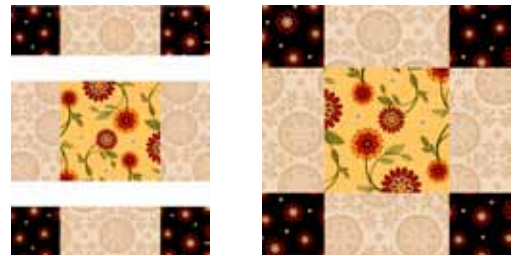
Topper Sunflower Block - Make 4



Bottom Sunflower

## Chain Block

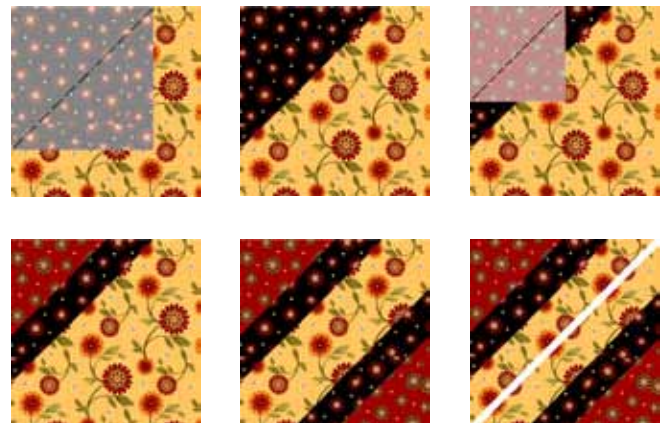
1. Sew a 2 1/8" x 3 3/4" cream rectangle between (2) 2 1/8" black squares to make the 2 1/8" x 7" top row. Press seams toward the black squares. Repeat to make the bottom row.
2. Stitch the 3 3/4" yellow square between the 2 remaining 2 1/8" x 3 3/4" cream rectangles to make the 3 3/4" x 7" center row. Press seams toward the yellow square.
3. Sew the center row between the top and bottom rows to complete the 7" x 7" Chain block. Press seams toward the top and bottom rows.



Chain Block - Make 1

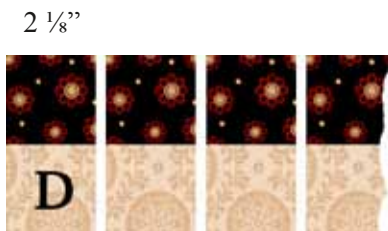
## Corner Blocks

1. Mark a diagonal line on the wrong side of each 5 3/8" black square and 3 3/4" red square.
2. Place a marked black square right sides together on 1 corner of each 7 3/8" yellow sunflower square. Stitch on the marked lines. Trim seam allowance to 1/4". Press the black triangles open. Repeat with a marked red square on the black corners.

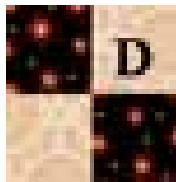


Stripe Triangles  
Make 4

- Repeat step 2 on the opposite corner of the yellow sunflower squares. Cut the squares in half on the unstitched diagonal to make 4 stripe triangles.
- Sew the  $2\frac{1}{8}$ " x 20" black strip lengthwise together with the  $2\frac{1}{8}$ " x 20" cream strip to make a strip set. Press seam toward the black strip. Crosscut the strip set into (8)  $2\frac{1}{8}$ " segments.



- Join 2 segments to make (1)  $3\frac{3}{4}$ " x  $3\frac{3}{4}$ " four-patch. Press seam to 1 side. Repeat to make 4 four-patches total.



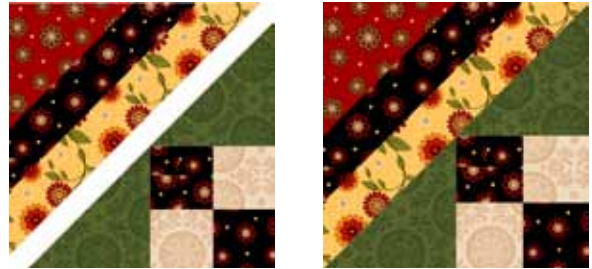
Four-Patch - Make 4

- Stitch a dark green  $4\frac{1}{8}$ " triangle to 2 adjacent edges of each four-patch to complete 4 pieced triangles. Press seams toward the dark green triangles.



Pieced Triangle - Make 4

- Sew a stripe triangle to a pieced triangle to complete (1) 7" x 7" Corner block. Press seam toward the stripe triangle. Repeat to make 4 blocks total.



Corner Block - Make 4

## Quilt/Topper Assembly

*Note: Refer to the exploded wall quilt diagram as needed throughout the following steps.*

- To make the wall quilt, sew the Top Sunflower block between 2 Corner blocks to make the top row. Press seams toward the Corner blocks. Repeat with the Bottom Sunflower block to make the bottom row.
- Stitch the Chain block between the Left and Right Sunflower blocks to make the center row. Press seams toward the Chain block.
- To make the topper, repeat steps 1 and 2 using Bottom Sunflower blocks in all rows as shown in the exploded topper center diagram.
- Join the rows to complete the 20" x 20" pieced center. Press seams to 1 side.
- Sew the  $1\frac{3}{4}$ " x 20" cream strips to opposite sides of the pieced center and the  $1\frac{3}{4}$ " x  $22\frac{1}{2}$ " strips to the top and bottom. Press seams toward the strips.

6. Fold and press the 1 1/8" x 22 1/2" black strips in half lengthwise with wrong sides together. Place a folded strip on the outside edge of the bordered center with the raw edges of the strip and bordered center aligned and the fold toward the pieced center. Pin to hold. Repeat on the opposite edge and then the 2 remaining edges of the bordered center. Machine-baste 1/8" from the edge all around. Remove pins.
7. Stitch the 2 1/2" x 22 1/2" light green sunflowers strips to opposite sides of the bordered center and the 2 1/2" x 26 1/2" strips to the top and bottom to complete the top. Press seams toward the strips, leaving the folded black strips flat on the inner cream border to form decorative flange strips.
8. Layer the top with the backing and a 34" x 34" batting piece. Quilt as desired. Bind using your favorite method and the black print binding strips to complete the quilt.



Exploded Wall Quilt



Exploded Topper Center

*While all possible care has been taken to ensure the accuracy of this pattern, we are not responsible for printing errors or the way in which individual work varies.*