

Harvest Botanical

By Jane's Garden



Quilt



A Free Project Sheet From

 Henry Glass & Co., Inc.



facebook

Finished Quilt Size: 47" x 65"
49 West 37th Street, New York, NY 10018
tel: 212-686-5194 fax: 212-532-3525
Toll Free: 800-294-9495
www.henryglassfabrics.com

HARVEST BOTANICAL Quilt

Finished Quilt Size: 47" x 65"

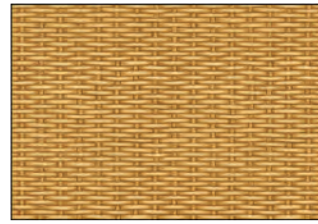
Fabrics in the Collection



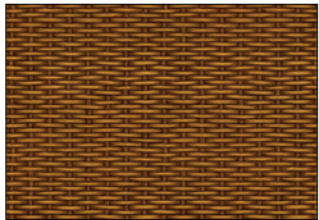
Leaves - Green
9795-66



Leaves - Brown
9795-33



Basket Weave Texture - Cream
9794-44



Basket Weave Texture - Brown
9794-33



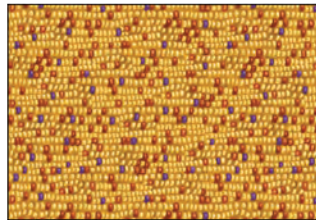
Stripe - Brown
9793-33



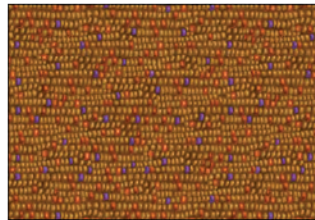
Sunflowers - Brown
9792-33



Sunflowers - Blue
9792-11



Corn Texture - Cream
9791-44



Corn Texture - Brown
9791-33



Cornucopia w/ Squash - Cream
9790-44



Cornucopia w/ Squash - Brown
9790-33



Small Berries - Cream
9789-44



Small Berries - Brown
9789-33



Small Berries - Blue
9789-11



Panel - Brown
9788P-33

HARVEST BOTANICAL

Quilt

Page 1

Materials

1 panel	Panel - Brown	9788P-33
$\frac{7}{8}$ yard	Leaves - Green	9795-66
$1\frac{3}{4}$ yards	Stripe - Brown	9793-33
$1\frac{2}{3}$ yards	Basket Weave Texture - Cream	9794-44
1 yard	Corn Texture - Brown	9791-33
$\frac{1}{2}$ yard	Sunflowers - Blue	9792-11
$\frac{7}{8}$ yard	Cornucopia w/ Squash - Brown	9790-33
$3\frac{1}{4}$ yards	Cornucopia w/ Squash - Cream	9790-44 (Backing)

Cutting Instructions

Please note: all strips are cut across the width of fabric (WOF) from selvage to selvage edge unless noted otherwise.

From the Panel - Brown (A), cut:

- Fussy cut (6) panels, each approximately $10\frac{1}{2}$ " square.

From the Leaves - Green (B), cut:

- (1) $14\frac{1}{2}$ " x width of fabric (WOF) strip. Sub-cut strip into (6) $2\frac{1}{2}$ " x $14\frac{1}{2}$ " strips and (6) $2\frac{1}{2}$ " x $10\frac{1}{2}$ " strips.
- (3) $3\frac{1}{2}$ " x WOF strips. Sub-cut strips into (30) $3\frac{1}{2}$ " squares.

From the Stripe - Brown (C), cut:

- Fussy cut (12) $3\frac{1}{2}$ " x 20" strips, each centered on a narrow border.

From the Basket Weave Texture - Cream (D), cut:

- (2) 2" x $54\frac{1}{2}$ " strips from the length of fabric (LOF).
- (2) 2" x $39\frac{1}{2}$ " WOF strips.

From the Corn Texture - Brown (E), cut:

- (1) $14\frac{1}{2}$ " x WOF strip. Sub-cut strip into (6) $2\frac{1}{2}$ " x $14\frac{1}{2}$ " strips and (6) $2\frac{1}{2}$ " x $10\frac{1}{2}$ " strips.
- (6) $2\frac{1}{2}$ " x WOF strips for the binding.

From the Sunflowers - Blue (F), cut:

- (3) $3\frac{1}{2}$ " x WOF strips. Sub-cut strips into (30) $3\frac{1}{2}$ " squares.

From the Cornucopia w/ Squash - Brown (G), cut:

- (6) $4\frac{1}{2}$ " x WOF strips. Sew the strips together, end to end with diagonal seams, and cut (2) $4\frac{1}{2}$ " x $57\frac{1}{2}$ " strips and (2) $4\frac{1}{2}$ " x $47\frac{1}{2}$ " strips.

From the Cornucopia w/ Squash - Cream (Backing), cut:

- (2) 55" x WOF strips for the backing. Sew the strips together and trim to make the 55" x 73" back.

Sewing Instructions

1. Sew (1) 2 ½" x 10 ½" Fabric B strip to each side of (1) 10 ½" Fabric A square. Sew (1) 2 ½" x 14 ½" Fabric B strip to the top and to the bottom of the Fabric A square. Trim the block to measure 12 ½" square to complete one Block One center.

2. Center (1) 3 ½" x 20" Fabric C strip on one side of the Block One center and pin in place. Start sewing the strip a ¼" from the top edge of the Block One center and stop a ¼" from the bottom edge. **DO NOT TRIM THE EXCESS.** Repeat with the opposite side.

3. Repeat Step 2 to sew (1) 3 ½" x 20" Fabric C strip to the top and to the bottom of the Block One center, making sure to stop and start ¼" away from each end of the Block One center. To miter each corner, fold the quilt top on a diagonal, wrong side together. This should line up the strips from adjacent sides (Fig. 1).

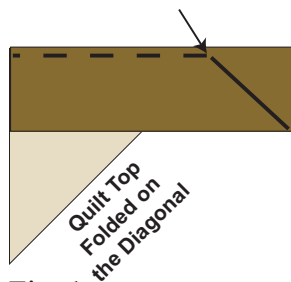


Fig. 1

4. Starting at the sewn seam (represented by the arrow in Figure 1), draw a 45-degree line to the edge of the fabric. Sew on the drawn line. Trim the excess fabric leaving a ¼" seam. Repeat this step with the remaining corners to complete one Block One (Fig. 2).

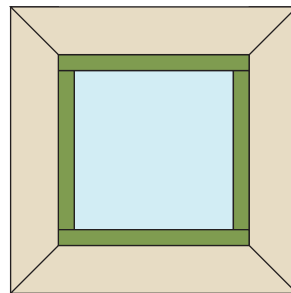


Fig. 2

5. Repeat Steps 1-4 to make (3) Block Ones total.

6. Sew (1) 2 ½" x 10 ½" Fabric E strip to each side of (1) 10 ½" Fabric A square. Sew (1) 2 ½" x 14 ½" Fabric E strip to the top and to the bottom of the Fabric A square. Trim the square to measure 12 ½" square to complete (1) Block Two center.

7. Sew (2) 3 ½" Fabric B squares and (2) 3 ½" Fabric F square together, alternating them, to make one strip. Repeat to make a second strip. Sew (1) strip to each side of the Block Two center as shown in Figure 3.

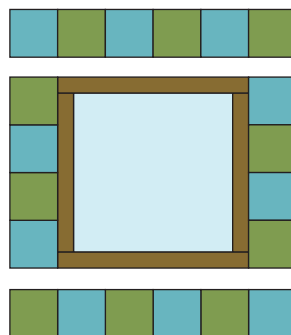


Fig. 3

8. Sew (3) 3 ½" Fabric F squares and (3) 3 ½" Fabric B square together, alternating them, to make one strip. Repeat to make a second strip. Sew (1) strip to the top and to the bottom of the Block Two center, as shown in Figure 3 to complete (1) Block Two.

9. Repeat Steps 6-8 to make (3) Block Twos total.

Quilt Top Assembly

(Refer to the Quilt Photo while assembling.)

10. Sew (1) Block One and (1) Block Two together, in that order, to make Row One. Repeat to make Row Three.

11. Sew (1) Block Two and (1) Block One together, in that order, to make Row Two.

12. Sew the three rows together, in numerical order, to make the quilt top.

13. Sew (1) 2" x 54 ½" Fabric D strip to each side of the quilt top. Sew (1) 2" x 39 ½" Fabric D strip to the top and to the bottom of the quilt top.

14. Sew (1) 4 ½" x 57 ½" Fabric G strip to each side of the quilt top. Sew (1) 4 ½" x 47 ½" Fabric G strip to the top and to the bottom of the quilt top.

15. Layer and quilt as desired.

16. Sew the (6) 2 ½" x WOF Fabric E strips together, end to end with 45-degree seams, to make the binding. Fold this long strip in half lengthwise with wrong sides together and press.

17. Bind as desired.