

Gathering Basket

Bumper Crop Patchwork Quilt

by Kim Diehl



Finished Quilt Size: 29½" x 29½"
A Free Project Sheet from

 Henry Glass & Co., Inc.



49 West 37th Street, New York, NY 10018
tel: 212-686-5194 • fax: 212-532-3525
Toll-free: 800-294-9495
www.henryglassfabrics.com

facebook

Bumper Crop Patchwork Quilt

Finished quilt size: 29½" x 29½"

Finished block size: 3" x 3"

MATERIALS

1 fat eighth (9" x 22") of 24 assorted prints for blocks, border, and binding: 6432-11, 33, 66, 99; 6433-44, 66, 88; 6434-11, 66; 6435-33, 66, 88; 6436-22, 88, 99; 6437-33, 88; 6438-33, 77; 6439-55, 77, 88; 6440-33, 55

1 fat eighth of 4 assorted neutral prints for blocks and border: 6434-44; 6437-44; 6438-44; 6440-44

1 yard of print of your choice for backing (Kim suggests 6435-33)

36" x 36" square of batting

Basic supplies for quilting

CUTTING

Cut all pieces across the width of the fabric in the order given unless otherwise noted.

From the 24 assorted prints, cut a combined total of:

49 squares, 3½" x 3½" (To achieve a balance of color in the quilt center Snowball blocks, Kim used each assorted print twice, and then cut a third square from one favorite print.)

80 rectangles, 1½" x 4½"

8 rectangles, 1" x 4½"

4 squares, 4½" x 4½"

Enough 2½"-wide random-length strips to make a 128" length of binding when joined together end-to-end.

From each of the four assorted neutral prints, cut:

69 squares, 1½" x 1½" (combined total of 276)



PIECING THE SNOWBALL BLOCKS

Sew all pieces with right sides together and a ¼" seam allowance unless otherwise noted.

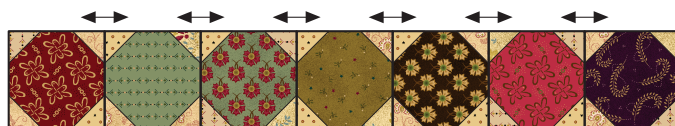
- 1 Use a pencil and an acrylic ruler to draw a diagonal sewing line from point to point on the wrong side of each neutral print 1½" square.
- 2 Select one assorted print 3½" square and four prepared 1½" squares cut from assorted neutral prints. Layer a neutral square onto one corner of the assorted print square. Stitch the pair together on the drawn line. Fold the resulting inner triangle open, aligning the corner of the triangle with the corner of the assorted print to keep it square; press. Trim away the excess layers beneath the top triangle, leaving a ¼" seam allowance. In the same manner, use the remaining neutral squares to complete the stitching for the Snowball block.



- 3 Repeat step 2 to make a total of 49 pieced Snowball blocks measuring 3½" square, including the seam allowances. Reserve the remaining prepared neutral print 1½" squares for later use.

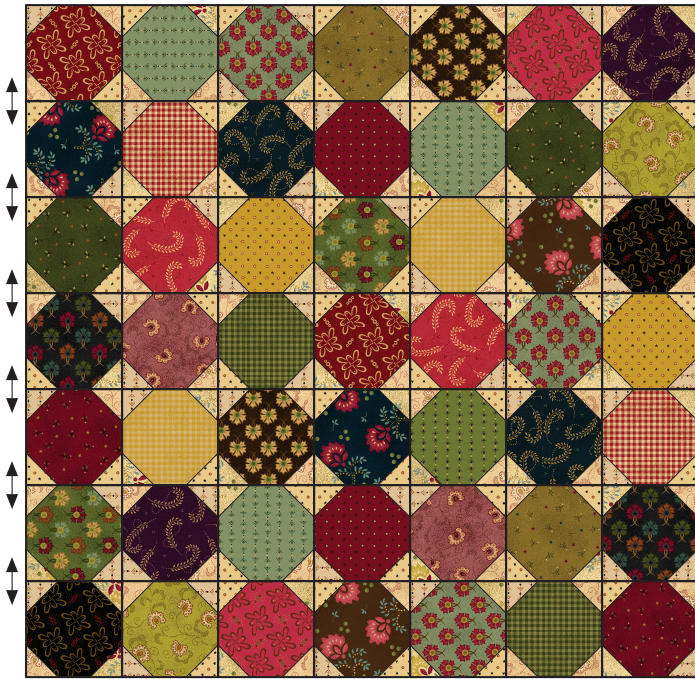
PIECING THE QUILT CENTER

- 1 Lay out seven Snowball blocks to form a row. Join the blocks. Press the seam allowances open. Repeat for a total of seven pieced rows.



Make 7.

- 2 Lay out the pieced rows to form the quilt center. Join the rows. Press the seam allowances open. The pieced quilt center should now measure 21½" square, including the seam allowances.



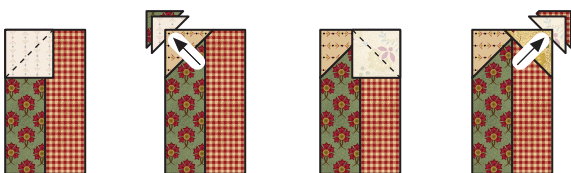
PIECING AND ADDING THE BORDER

- 1 Select two assorted print 1½" x 4½" rectangles. Join the pair along one long edge. Press the seam allowances open. Repeat for a total of 36 joined pairs. Reserve the remaining eight assorted print 1½" x 4½" rectangles.



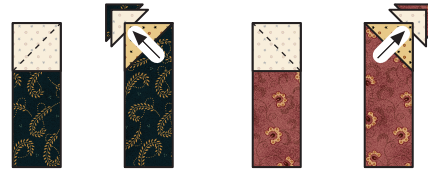
Make 36.

- 2 Select a joined pair from step 1 and two prepared neutral print 1½" squares. Layer, stitch, press, and trim a neutral print square onto one corner of the joined pair as instructed in step 2 of "Piecing the Snowball Blocks." In the same manner, stitch the remaining neutral square onto the adjacent corner of the joined pair to form a mirror-image triangle. Repeat for a total of 36 pieced rectangle units.



Make 36.

- 3 Layer a prepared neutral 1½" square onto one end of an assorted print 1½" x 4½" rectangle. Stitch, press, and trim as previously instructed. Repeat for a total of four pieced rectangles. In the same manner, layer, stitch, press, and trim four mirror-image pieced rectangles.



Make 4.

Make 4.

- 4 Lay out nine pieced rectangle units, one pieced rectangle, one pieced mirror-image rectangle, and two assorted print 1" x 4½" rectangles as shown. Join and press as shown. Repeat for a total of four pieced border units measuring 4½" x 21½", including the seam allowances.



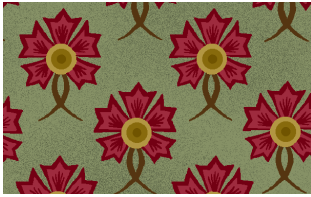
- 5 Using the pictured quilt as a guide, join a pieced border unit to the right and left sides of the quilt center. Press the seam allowances toward the quilt center. Join an assorted print 4½" square to each end of the remaining pieced border units. Press the seam allowances toward the squares. Join these pieced units to the remaining sides of the quilt center. Press the seam allowances toward the quilt center. The pieced quilt top should now measure 29½" square, including the seam allowances.

COMPLETING THE QUILT

Layer the quilt top, batting, and backing. Quilt the layers. Join the 2½"-wide random lengths of assorted prints together to make a 128" length of binding and use it to bind the quilt.

Gathering Basket

Fabrics in the Collection



6432-11



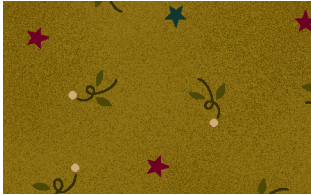
6432-33



6432-66



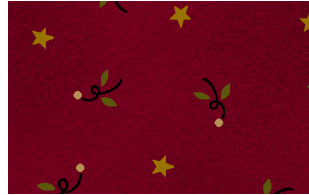
6432-99



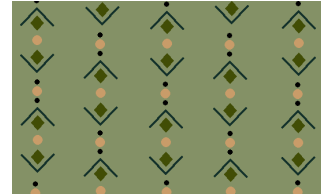
6433-44



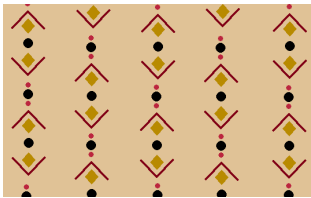
6433-66



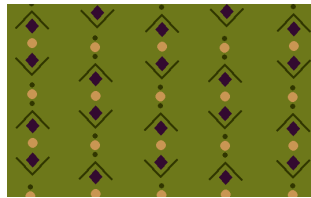
6433-88



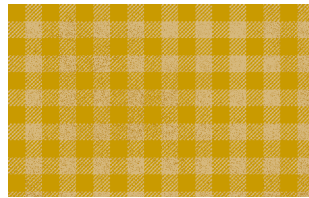
6434-11



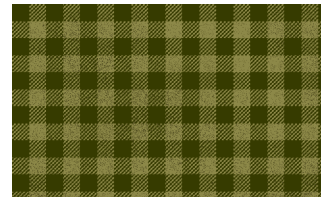
6434-44



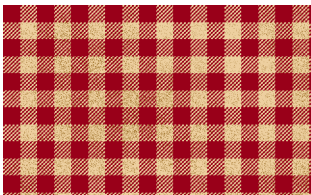
6434-66



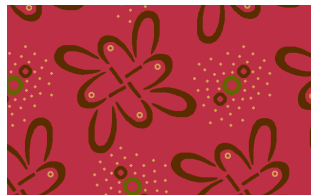
6435-33



6435-66



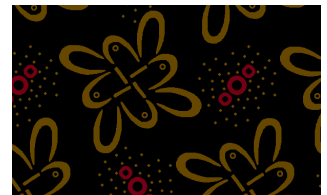
6435-88



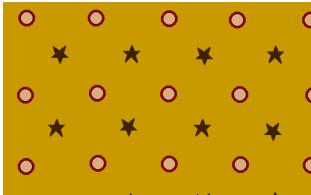
6436-22



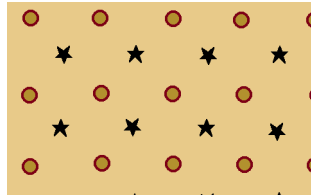
6436-88



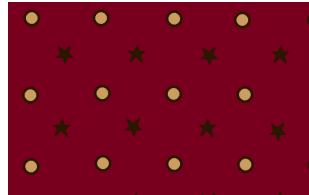
6436-99



6437-33



6437-44



6437-88



6438-33



6438-44



6438-77



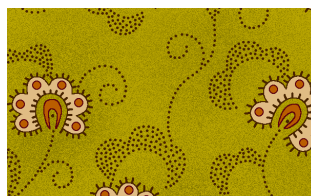
6439-55



6439-77



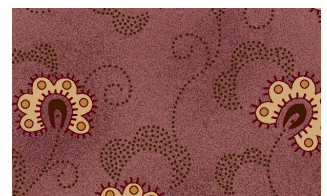
6439-88



6440-33



6440-44



6440-55