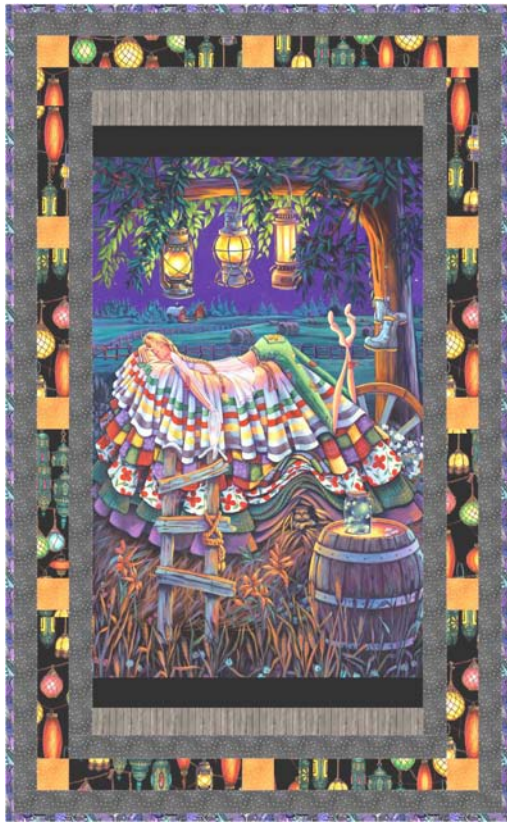


Sweet Dreams, Princess

31-1/2" x 51-1/2"



31-1/2" x 51-1/2"

31-1/2" x 51-1/2"



Quilt design:

Deborah Stanley for Frog Hollow Designs
www.froghollowdesigns.com

2014: Elizabeth's Studio LLC—All rights reserved

Elizabeth's Studio LLC
440 S. Main Street, Milltown NJ 08850
732-651-4115 www.elizabethsstudio.com

FABRICS: *Princess on a Pea Around the World* by Denyse Klette for Elizabeth's Studio LLC

Fabric Requirements	<u>Prairie Princess</u>	<u>First Nations Princess</u>	<u>African Princess</u>
Panel	1 Panel 6604—Black	1 Panel 6605—Black	1 Panel 6607—Black
Fabric A—1st and 3rd borders 2/3 yard	P416—Black (Sparkle)	P416—Royal (Sparkle)	P416—Black (Sparkle)
Fabric B—2nd Border Contrast Squares 1/8 yard	P416—Orange (Sparkle)	430—Royal (Sky) - if fussy cutting moons, 1/4 yard	P416—Gold (Sparkle)
Fabric C—2nd Border Rectan- gles 1/2 yard	6609—Black (Globes)	449—Black (Tucson col- lection)	6609—Black (Globes)
Binding 1/2 yard	446—Purple (Butterfly Gar- den collection)	189—Paw Prints	P416—Gold (Sparkle)
Backing Fabric 1-5/8 yards			
Batting for 31-1/2" x 51-1/2" top			

CUTTING:

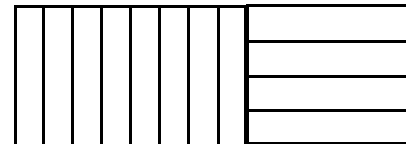
From Princess on a Pea Around the World Panel: Trim Panel to measure 21-1/2' X 41-1/2".

From Fabric A: cut (10) strips 2" x width of fabric for first and third borders.

From Fabric B: Cut (1) strip 2-1/2" x width of fabric, cross cut into (12) 2-1/2" squares. For Sky fabric, center moons and fussy cut 4 (or more) squares as desired.

From Fabric C: Cut (1) strip 10" x width of fabric, cross cut into (8) 10" x 2-1/2" rectangles for side pieced borders. From remaining fabric, cut (4) 2-1/2" x 11-1/2" rectangles for top/bottom pieced borders. (Globe fabric is directional, so it is important to cut the side and top/bottom rectangles in the correct orientation).

From Binding Fabric: Cut (5) 2-1/2" x width of fabric strips, set aside.



FIRST BORDER:

Sew (3) 2" strips of Fabric A together along short ends to form long strip. From this, cut two border strips 2" x 41-1/2". Sew to sides of center panel. Using two more Fabric A strips, cut two border strips measuring 2" x 24-1/2". Sew to top and bottom of center panel.

SECOND BORDER (pieced):

Following diagram at right, use (8) 10" rectangles of Fabric C and (6) 2-1/2" squares of Fabric B to form 2 side borders. Sew to sides of center panel. For Globe fabric: maintain correct up/down direction of hanging globes. For Sky fabric: if using fussy-cut moons from Sky fabric, place the squares in the desired positions on corners or middles of borders).

Following diagram below, use (4) 11-1/2" rectangles and (6) 2-1/2" squares to form top and bottom borders. Sew to top and bottom of center panel.



THIRD BORDER:

Sew (3) 2" strips of Fabric A together along short ends to form long strip. From this, cut two border strips 2" x 48-1/2". Sew to sides of center panel. Using two more Fabric A strips, cut two border strips measuring 2" x 31-1/2". Sew to top and bottom of center panel.

FINISHING:

Layer with batting and backing fabric, quilt as desired. Use 2-1/2" binding strips to bind quilt.

