



by THE BUGGY BARN

Crazy Like Us



49 West 37th Street
New York, NY 10018
Tel: 212-686-5194 fax: 212-532-3525
Toll Free: 800-294-9495
www.henryglassfabrics.com

facebook



Henry Glass & Co., Inc.

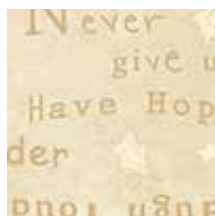
Free Quilt Pattern
designed by Sue Falkowski
66 1/2" x 81 1/2"



Quilt 66 1/2" x 81 1/2"
Designed by Sue Falkowski

Crazy Like Us

by the Buggy Barn
Fabric in the Collection



8245--44
Words & Stars



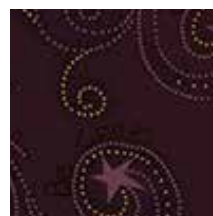
8245--77



8245--88



8246--35
Swirly Stars



8246--55



8246--77



8247--35
Stripe



8247--66



8247--77



8248--44
Star Wreath



8248--55



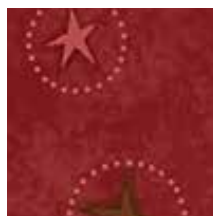
8248--77



8249--66
Stars & Circles



8249--77



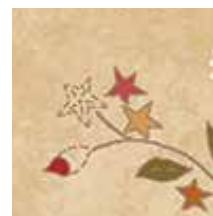
8249--88



8250--33
Star Flower Toss



8250--38



8250--44



8251--33
Plaid



8251--66



8251--88

by  THE BUGGY BARN

Star Flower Basics Collection



8068--33



8068--46



8068--62



8068--87

Crazy Like Us Quilt

66 1/2" x 81 1/2"

Fabric Requirements

Fabric A	1 yd	8245-44 Cream Words & Stars
Fabric B	5/8 yd	8248-44 Cream Star Wreath
Fabric C	5/8 yd	8248-71 Blue Star Wreath
Fabric D	2 1/4 yds	8245-71 Blue Words & Stars
Fabric E	3/4 yd	8251-33 Gold Plaid

(Incl binding)

Fabric F	1/2 yd	8250-33 Gold Star Flower Toss
Fabric G	1/2 yd	8068-33 Lt Gold Star Flower

Basics

1/4 yd or one fat quarter of the following:

8245-88
8246-35, 55, 71
8247-35, 66, 71
8248-55
8249-66, 71, 88
8250-38, 44
8251-66, 88

Star Flower Basics 8068-62, 81, 46

5 yards Backing

Also needed: lightweight fusible for appliqué

Note: Seam allowance is 1/4". WOF=width of fabric.

Please read through the instructions before beginning the project.

Cutting Requirements

Cut the backgrounds, border and binding first.

*Appliqué Backgrounds - Trim to 8" x 8" after appliqué is complete.

Fabric A Cream Words & Stars

(3) 8 1/2" x WOF strips, re-cut into:

(10) 8 1/2" x 8 1/2" squares*

Fabric B Cream Star Wreath

(2) 8 1/2" x WOF strips, re-cut into:

(7) 8 1/2" x 8 1/2" squares*

Fabric C Blue Star Wreath

(2) 8 1/2" x WOF strips, re-cut into:

(7) 8 1/2" x 8 1/2" squares*

Fabric D Blue Words & Stars

(7) 8" x WOF strips, pieced into:

(2) 8" x 66 1/2" side borders

(2) 8" x 51 1/2" top and bottom borders

Fabric E Gold Plaid

(8) 2 1/2" x WOF strips, pieced together end to end for binding

Fabric G Gold Star Flower Toss

(2) 2" x WOF strips, re-cut into

(28) 2" x 2" squares for the pieced blocks

Appliqué

Transfer appliqué shapes to template plastic.

Follow manufacturer's instructions for fusible webbing.

If you are using the needle-turn method, add a seam allowance to the shapes.

Trace (24) center pieces from assorted gold fabrics and (120) petal shapes from assorted red fabrics. Add a few blue petals for variety if you wish.

Arrange five petals with a gold flower center on each of the (24) 8 1/2" x 8 1/2" background squares. Don't worry too much about centering the flowers. Fuse or stitch in place, again following manufacturer's instructions.

Make 24. Trim the completed appliqué squares to 8" x 8".

Pieced blocks and pieced border,

From the remainder of your assorted fabrics cut:

For Blocks:

(112) 2" x 3 1/2" rectangles

(112) 3 7/8" x 3 7/8" squares for HST

For Pieced Border:

(4) 3 1/2" x 3 1/2" squares for corners of pieced border (we used 8250-44)

(106) 2 1/2" x 3 1/2" rectangles for pieced border

Block Construction

Pair two contrasting 3 7/8" x 3 7/8" squares. Draw a line from corner to corner on the wrong side of one square. Place the squares right sides together and stitch 1/4" from each side of the drawn line.

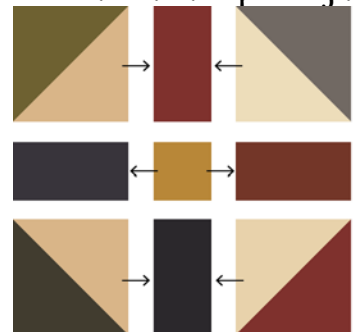
Cut apart on the line. Press. This will give you (2) 3 1/2" x 3 1/2" HST units. Make (4).



Arrange the block pieces as shown and stitch together.

Use the assorted 2" x 3 1/2" rectangles and 2" x 2" gold squares with the HST.

These blocks are completely scrappy, so feel free to put the fabrics in any combination that is pleasing to you.



Make (28) blocks. They measure 8" x 8" unfinished. Set aside four of the blocks for the border.

Quilt Top Assembly

Using the picture of the quilt as a guide, arrange (24) pieced blocks alternating with the (24) appliqué blocks. Make eight rows of six blocks each. Press the seams toward the appliqué squares.

Sew the rows together to complete the quilt top.

Pieced Border

Top & Bottom: Sew (23) $2\frac{1}{2}" \times 3\frac{1}{2}"$ assorted rectangles together into a long strip. Make two. The top and bottom border strips will be a bit longer than the measurement of the quilt. Sew to the quilt top and trim to fit.

Sides: Sew (30) $2\frac{1}{2}" \times 3\frac{1}{2}"$ assorted rectangles together for a side border strip. Add a $3\frac{1}{2}" \times 3\frac{1}{2}"$ square to each end. Make two. Sew to the sides of the quilt top.

Outer Border

Sew an $8" \times 66\frac{1}{2}"$ strip to each side of the quilt top. Sew a block to each end of an $8" \times 51\frac{1}{2}"$ strip. Make two. Sew to the top and bottom of the quilt.

Layer, quilt and bind!

