

# Whimsy--Row--by--Row

Designed by Grace Wilson



White or Black color options

Finished size approximately 40" x 60"

Fresh Water Designs

GALAXY

EE SCHENCK CO

PORTLAND  
800.433.0722  
503.284.4124

6000 N. Cutter Cir.  
Portland, OR 97217  
fax 503.288.4475



LOS ANGELES  
800.237.6620  
323.584.8820

4561 Maywood Ave  
Vernon, CA 90058  
fax 323.584.8847

www.eeschenck.com

# Whimsy Row by Row

Approx. 40" x 60" Quilt ~ Designed by Grace Wilson  
 "Whimsy" fabric collection by Fresh Water Designs

"Pearl Essence Gemstone" (or) "Pearl Essence Solids" fabric collections by Galaxy Fabrics

## Cutting

Fabric A

Cut (2) 6-1/2" x 42" WOF strips  
 into (10) 6-1/2" squares

Fabric B

Cut (4) 6-1/2" squares

Fabric C

Cut (3) 6-1/2" squares

Fabric D

Cut (3) 6-1/2" squares

Fabric E

Cut (5) 4-1/2" x 42" parallel to selvage

Fabric F

Cut (4) 2-1/2" x 42" strips  
 into (20) 2-1/2" x 6-1/2" rectangles

Fabric G

Cut (2) 2" x 42" (WOF)

Fabric H

Cut (2) 2" x 42" (WOF)

Fabric I

Cut (2) 2" x 42" (WOF)

Fabric J

Cut (1) 2" x 42" (WOF)

Fabric K

Cut (1) 2" x 42" (WOF)

Fabric L

Cut (1) 2" x 42" (WOF)

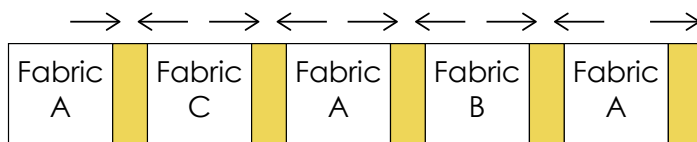
Fabric M

Cut (1) 2" x 42" (WOF)

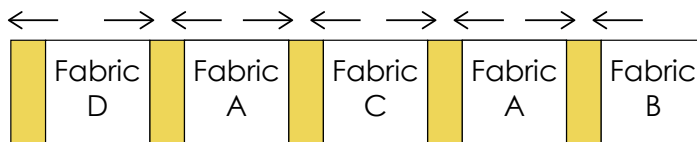
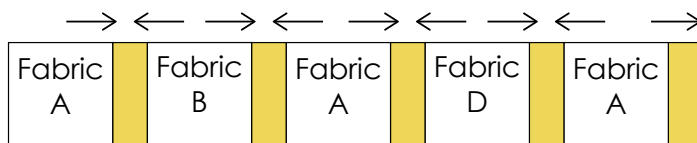
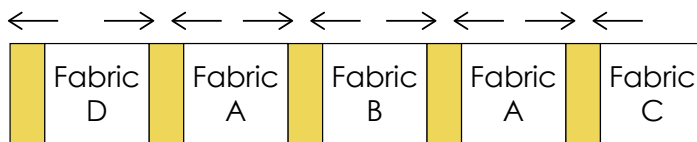
## Construction

### Assemble the Rows

1. Arrange three 6-1/2" squares of Fabric A and one 6-1/2" square each of Fabrics B and C in a row. Join by sewing a Fabric F 2-1/2" x 6-1/2" sashing rectangle between each square and one at the end of the row as shown below. Press seams toward the sashing.



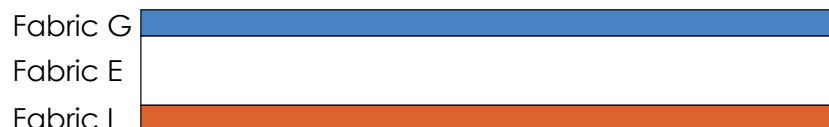
2. In the same manner, sew the three remaining rows as shown below.



3. (Optional) Embellish the yellow sashing strips with embroidery, rick rack or buttons. Check with your quilter. Some may want the embellishments added after the quilting is complete.



4. Sew a 4-1/2" wide fabric E strip to a 2" wide fabric G strip and a 2" wide fabric I strip as shown below. Press seams toward the 2" wide strips. Trim to 40-1/2" lengths (or if your rows from step 2 measure differently, adjust to fit).

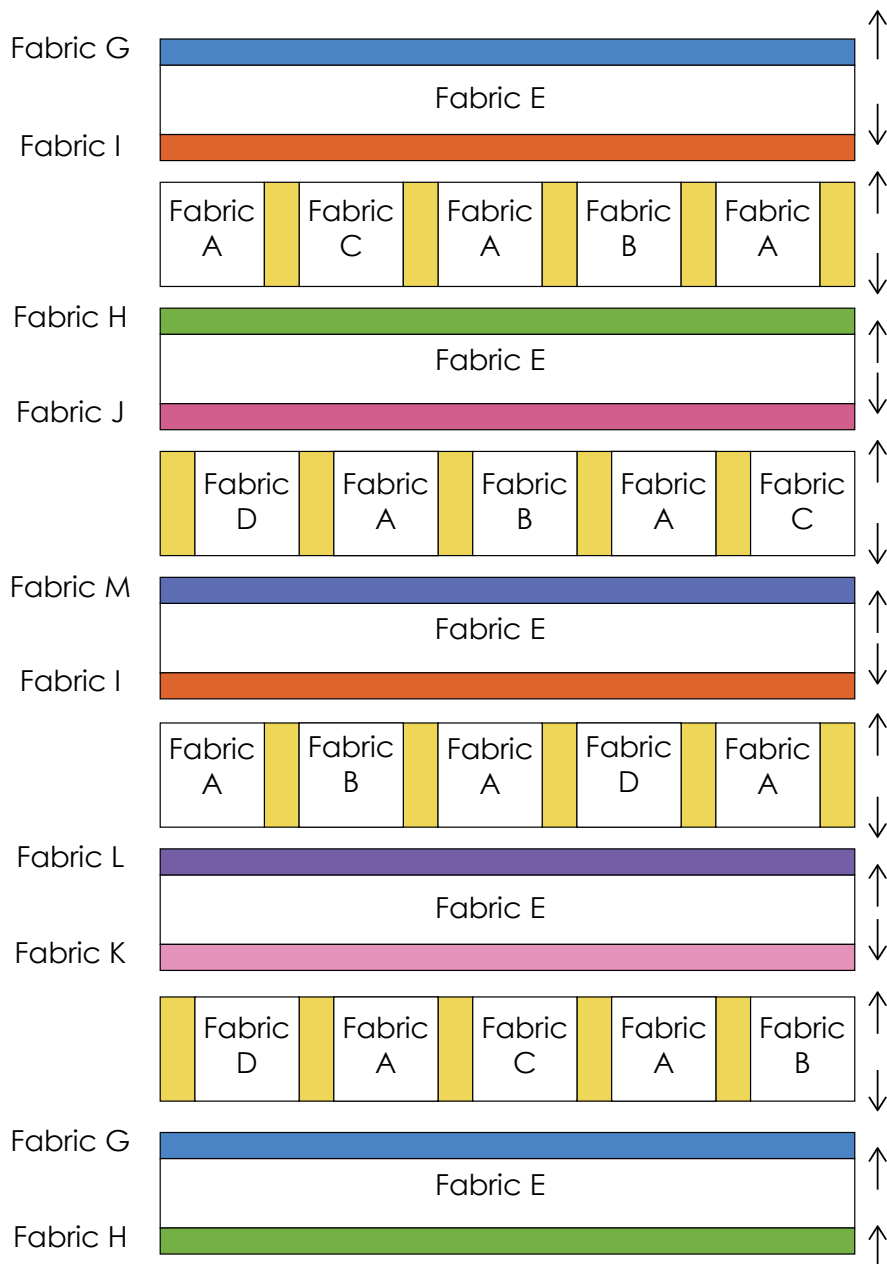


Make one each using fabrics G-E-I (shown), H-E-J, M-E-I, L-E-K and G-E-H.

# Construction

## Assemble the Quilt

5. Measure each of your pieced rows lengthwise and trim as necessary to make them equal lengths.
6. Sew row to row as shown below. Press seams toward the 2" wide strips.



## Finish the Quilt

7. Layer the backing wrong side up, the batting, and the quilt top right side up. Baste, then quilt as desired.
8. Prepare the double binding by joining the 2-1/2" x 42" binding strips with diagonal seams pressed open. Fold in half, wrong sides together and press to make a double binding.
9. Sew to the quilt with a 3/8" seam, mitering the corners.
10. Trim the excess batting and backing. Turn the binding to the back side and stitch down by hand with matching thread.

# Fabric

## "Whimsy" (choose white or black)

Fabric A ..... approx. 1/2 yd

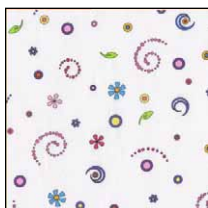


FWDWHI04-MW



FWDWHI04-MK

Fabric B ..... FQ or 1/4 yd

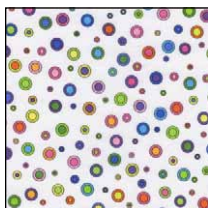


FWDWHI06-MW

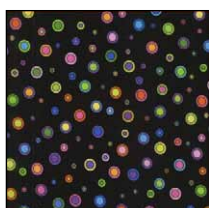


FWDWHI06-MB

Fabric C ..... FQ or 1/4 yd



FWDWHI05-MW



FWDWHI05-MB

Fabric D ..... FQ or 1/4 yd



FWDWHI01-MW



FWDWHI01-MK

Fabric E ..... 1-1/4 yds



FWDWHI02-MW



FWDWHI02-MK

## "Pearl Essence Solids" (for white version)

Fabric F ..... 1/3 yd



GALPGS-CIT

Fabric G ..... 1/4 yd



GALPGS-AGU

Fabric H ..... 1/4 yd



GALPGS-PER

Fabric I ..... 1/4 yd



GALPGS-CAR

Fabric J ..... 1/8 yd



GALPGS-SIP

Fabric K ..... 1/8 yd



GALPGS-PIT

Fabric L ..... 1/8 yd



GALPGS-DET

Fabric M ..... 1/8 yd



GALPGS-CAB

## "Pearl Essence Gemstone" (for black version)

Fabric F ..... 1/3 yd



GALPEG104-CIT

Fabric G ..... 1/4 yd



GALPEG103-AGU

Fabric H ..... 1/4 yd



GALPEG104-PER

Fabric I ..... 1/4 yd



GALPEG104-CAR

Fabric J ..... 1/8 yd



GALPEG103-SIP

Fabric K ..... 1/8 yd



GALPEG104-PIT

Fabric L ..... 1/8 yd



GALPEG103-DET

Fabric M ..... 1/8 yd



GALPEG103-CAB

## Backing

2-2/3 yds (horizontal seam) + 2/3 yd binding (favorite color)  
cut (6) 2-1/2" x 42" (model uses Fabric J)