

ABALONE COVE

Designed by Grace Wilson for Maywood Studio



finished size approx. 63" x 75"


MAYWOOD STUDIO

PORTLAND
800.433.0722
503.284.4124

6000 N. Cutter Cir.
Portland, OR 97217
fax 503.288.4475



LOS ANGELES
800.237.6620
323.584.8820

4561 Maywood Ave
Vernon, CA 90058
fax 323.584.8847

www.maywoodstudio.com

ABALONE COVE

Quilt designed by Grace Wilson for Maywood Studio
Maywood Studio Abalone Cove fabric collection

Cutting

Ocean (Earth)

Fabric A MAS2022-G (MAS2022-E)

- Cut (1) 4 1/2" x 20" strip
- Cut (3) 4 1/2" x 42" strips

Fabric B MAS2020-B (MAS2020-E)

- Cut (4) 4 1/2" x 20" strips
- Cut (2) 4 1/2" squares
- Cut (3) 4 1/2" x 42" strips
- Cut (7) 2 1/2" x 42" strips for the binding

Fabric C MAS2021-B (MAS2021-E)

- Cut (2) 4 1/2" x 42" strips

Fabric D MAS2023-BG (MAS2023-KE)

- Cut (5) 4 1/2" x 42" strips
- Cut (2) 4 1/2" x 20"
- Cut (9) 6 7/8" squares.
Cut the squares across both diagonals to get
(36) medium triangles

Fabric D MAS2023-BG (MAS2023-KE) Continued...

- Cut (2) 3 3/4" squares.
Cut the squares across one diagonal to get
(4) small triangles
- Cut (4) 6 1/2" x 63 1/2" strips

Fabric E MAS2020-G (MAS2020-K)

- Cut (2) 4 1/2" x 42" strips
- Cut (1) 4 1/2" x 20" strip
- Cut (4) 4 1/2" squares

Fabric F MAS2025-B (MAS2025-K)

- Cut (3) 4 1/2" x 42" strips
- Cut (2) 4 1/2" x 20" strips
- Cut (4) 4 1/2" squares

Backing

- Cut (2) 71" x WOF strips. Sew the strips together
and trim to make one 71" x 83" backing
piece.

Construction

Block Assembly:

1. Sew one 4 1/2" x 20" Fabric B strip lengthwise to each side of one 4 1/2" x 20" Fabric A strip. Sub-cut three 4 1/2" x 12 1/2" B/A/B units (Fig. 1).



Fig. 1

2. Sew one 4 1/2" x 42" Fabric E strip lengthwise to one side of one 4 1/2" x 42" Fabric D strip. Sew one 4 1/2" x 42" Fabric C strip to the opposite side to make one E/D/C strip. Repeat to make a second strip. Sub-cut twelve 4 1/2" x 12 1/2" E/D/C (or C/D/E) units (Fig. 2).

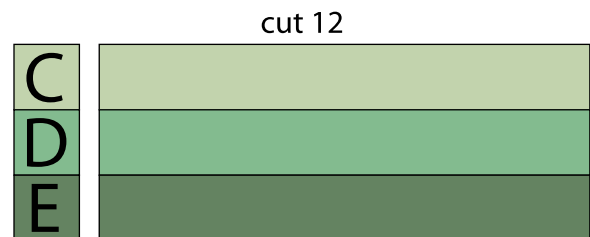


Fig. 2

3. Sew one 4 1/2" x 20" Fabric D strip lengthwise to one 4 1/2" x 20" Fabric E strip. Sub-cut four 4 1/2" x 8 1/2" D/E (or E/D) units (Fig. 3).



Fig. 3

4. Sew one 4 1/2" x 42" Fabric F strip, one 4 1/2" x 42" Fabric B strip, one 4 1/2" x 42" Fabric D strip and one 4 1/2" x 42" Fabric A strip together in that order. Repeat to make three F/B/D/A strips total. Sub-cut twenty-four 4 1/2" x 16 1/2" F/D/B/A (or A/D/B/F) (Fig. 4) units.



Fig. 4

5. Sew one 4 1/2" x 20" Fabric F strip, one 4 1/2" x 20" Fabric B strip and one 4 1/2" x 20" Fabric D strip together in that order. Sub-cut four 4 1/2" x 12 1/2" D/B/F (or F/B/D) units (Fig. 5).



Fig. 5

6. Sew one 4 1/2" x 20" Fabric B strip and one 4 1/2" x 20" Fabric F strip together. Sub-cut four 4 1/2" x 8 1/2" B/F (or F/B) units (Fig. 6).



Fig. 6

Assembling the quilt top:

(Refer to the quilt layout while assembling)

7. Follow the chart on next page to assemble the rows:

Row 1 & 21: one Fabric D small triangle
 Row 2 & 20: one Fabric D medium triangle, one 4 1/2" Fabric F square and one Fabric D medium triangle
 Row 3 & 19: one Fabric D medium triangle, one F/B unit, one 4 1/2" Fabric F square and one Fabric D medium

triangle

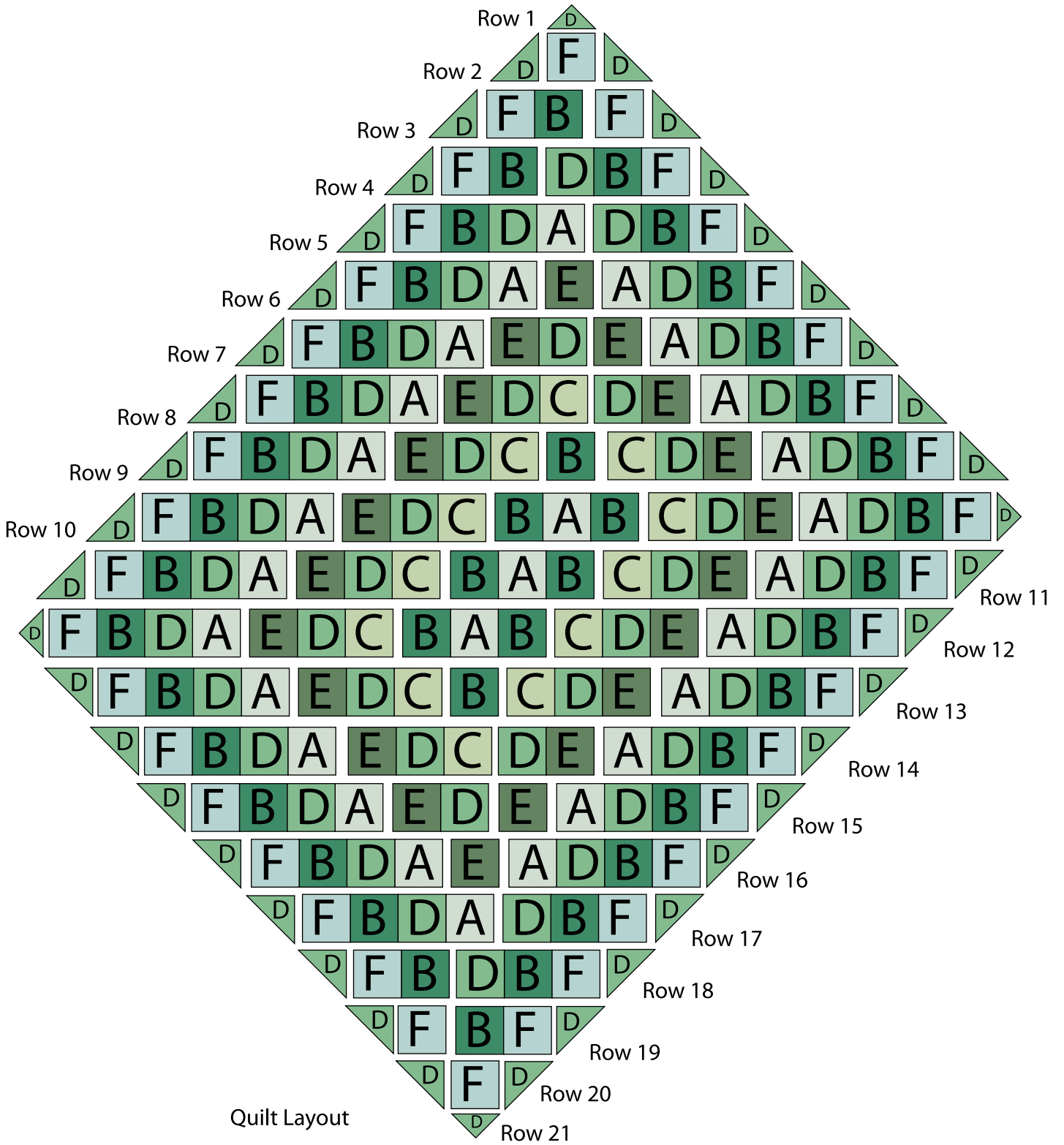
Row 4 & 18: one Fabric D medium triangle, one F/B unit, one D/B/F unit and one Fabric D medium triangle
 Row 5 & 17: one Fabric D medium triangle, one F/B/D/A unit, one D/B/F unit and one Fabric D medium triangle
 Row 6 & 16: one Fabric D medium triangle, one F/B/D/A unit, one 4 1/2" Fabric E square, one A/D/B/F unit and one Fabric D medium triangle
 Row 7 & 15: one Fabric D medium triangle, one F/B/D/A unit, one E/D unit, one 4 1/2" E square, one A/D/B/F unit and one Fabric D medium triangle
 Row 8 & 14: one Fabric D medium triangle, one F/B/D/A unit, one E/D/C unit, one D/E unit, one A/D/B/F unit and one Fabric D medium triangle
 Row 9 & 13: one Fabric D medium triangle, one F/B/D/A unit, one E/D/C unit, one 4 1/2" Fabric B square, one C/D/E unit, one A/D/B/F unit and one Fabric D medium triangle
 Row 10: one Fabric D medium triangle, one F/B/D/A unit, one E/D/C unit, one B/A/B unit, one C/D/E unit, one A/D/B/F unit and one Fabric D small triangle
 Row 11: one Fabric D medium triangle, one F/B/D/A unit, one E/D/C unit, one B/A/B unit, one C/D/E unit, one A/D/B/F unit and one Fabric D medium triangle
 Row 12: one Fabric D small triangle, one F/B/D/A unit, one E/D/C unit, one B/A/B unit, one C/D/E unit and one A/D/B/F unit and one Fabric D medium triangle

8. Sew one 6 1/2" x 63 1/2" Fabric D strip to each side of the quilt top. Sew one 6 1/2" x 63 1/2" Fabric D strip to the top and bottom of the quilt top.

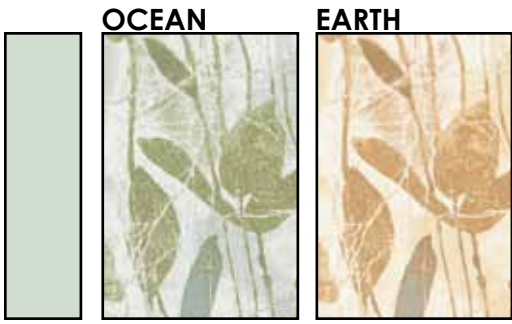
9. Layer and quilt as desired.

10. Sew the seven 2 1/2" x WOF Fabric B strips together end-to-end with 45° seams to make the binding. Fold this long strip in half lengthwise with wrong sides together and press.

11. Bind as desired.

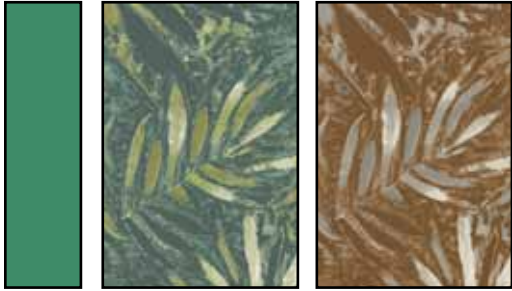


ABALONE COVE



A

Fabric

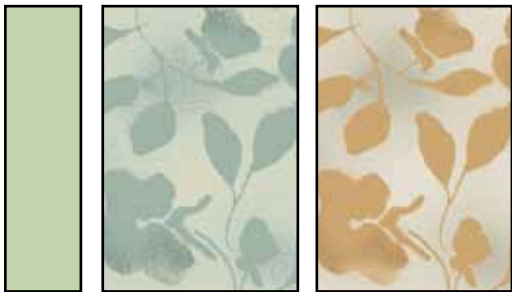


B

OCEAN

Fabric AGreen Bamboo MAS2022-G 2/3 yard
 Fabric BBlue Large Fern MAS2020-B 1-1/2 yards*
 Fabric CBlue Allover Floral MAS2021-B 3/8 yard
 Fabric DBlue Green Medallions MAS2023-BG 2-7/8 yard
 Fabric EGreen Large Fern MAS2020-G 5/8 yard
 Fabric FBlue Allover Tiles MAS2025-B 7/8 yard
 BackingYour Choice 4 yards

*Includes Binding

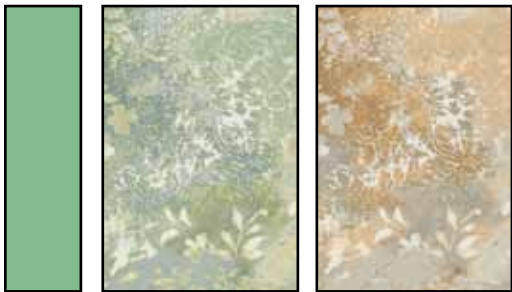


C

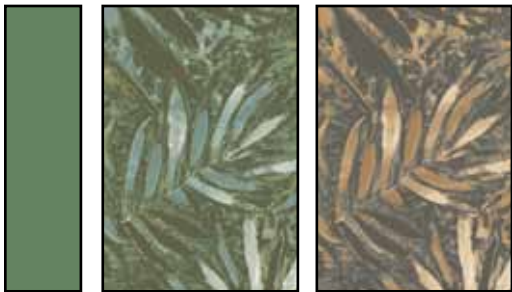
EARTH

Fabric AGold Bamboo MAS2022-E 2/3 yard
 Fabric BBrown Large Fern MAS2020-E 1-1/2 yards*
 Fabric CGold Allover Floral MAS2021-E 3/8 yard
 Fabric DGrey Gold Medallions MAS2023-KE 2-7/8 yard
 Fabric EGrey Large Fern MAS2020-K 5/8 yard
 Fabric FGrey Allover Tiles MAS2025-5 7/8 yard
 BackingYour Choice 4 yards

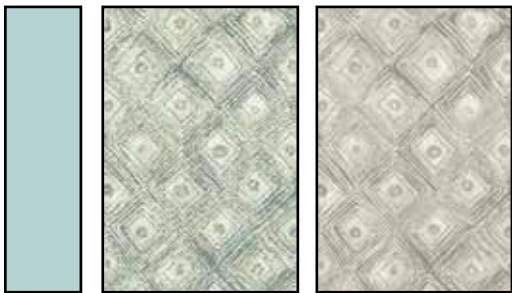
*Includes Binding



D



E



F

