

Designed By: Heidi Pridemore
Finished Quilt Size: 58" x 82"



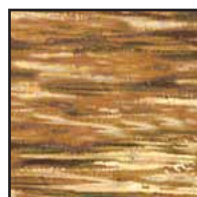
23972 A



23975 G



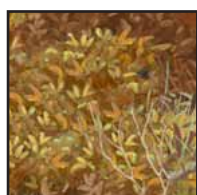
23974 A



23976 S



23528 EA



23975 A



23974 H



23973 X



23528 BZ



23974 E
(Backing)

FABRIC REQUIREMENTS	
Design:	Yards
23972 A	1 Panel
23975 G	1 1/8
23974 A	3/8
23976 S	1/4
23528 EA	1
23975 A	5/8
23974 H	3/8
23973 X	2 1/8
23528 BZ	1 1/2
23974 E (Backing)	5 1/4

Cutting Directions:

Note: All strips are cut across the width of the fabric unless noted otherwise.

Fabric A: Panel 23972 A

- Fussy cut one 21 1/2" x 34 1/2" panel.

Fabric B: Green Trees 23975 G

- Cut two 2 1/2" x 34 1/2" strips from the length of fabric (LOF).
- Cut two 4" x 25 1/2" LOF strips.
- Cut sixteen 3 3/8" squares from the remaining fabric.

Fabric C: Brown Patches 23974 A

- Cut two 5 1/2" x WOF strips. Sub-cut the strips into eight 5 1/2" squares.

Fabric D: Brown Stripe 23976 S

- Cut two 3 3/8" x WOF strips. Sub-cut the strips into sixteen 3 3/8" squares.

Fabric E: Cream Texture 23528 EA

- Cut three 3 3/8" x WOF strips. Sub-cut the strips into thirty-two 3 3/8" squares.
- Cut two 3" x WOF strips. Sub-cut the strips into sixteen 3" squares.
- Cut six 2 1/2" x WOF strips. Sew the strips together, end to end with diagonal seams, and cut two 2 1/2" x 64 1/2" strips and two 2 1/2" x 44 1/2" strips.

Fabric F: Gold Trees 23975 A

- Cut one 8" x WOF strip. Sub-cut the strip into sixteen 1 3/4" x 8" strips.
- Cut six 1 3/4" x WOF strips. Sub-cut the strips into sixteen 1 3/4" x 10 1/2" strips.

Fabric G: Green Patches 23974 H

- Cut two 5 1/2" x WOF strips. Sub-cut the strips into eight 5 1/2" squares.

Fabric H: Main Print 23973 X

- Cut two 6 1/2" x 70 1/2" LOF strips.
- Cut six 6 1/2" x 27" approx. remaining WOF. Piece strips together end to end with diagonal seams and cut two 6 1/2" x 58 1/2" strips

Fabric I: Blue Texture 23528 BZ

- Cut one 8" x WOF strip. Sub-cut the strip into sixteen 1 3/4" x 8" strips.
- Cut one 10 1/2" x WOF strip. Sub-cut the strip into sixteen 1 3/4" x 10 1/2" strips.
- Cut four 1 1/2" x WOF strips. Sew the strips together, end to end with diagonal seams, and cut two 1 1/2" x 68 1/2" strips.
- Cut three 1 1/2" x WOF strips. Sew the strips together, end to end with diagonal seams, and cut two 1 1/2" x 46 1/2" strips.
- Cut eight 2 1/2" x WOF strips for the binding.

Backing: Cream Patches 23974 E

- Cut two 90" x **WOF** strips. Sew together and trim to make one 66" x 90" back.

Block Assembly:

1. Place one $3\frac{3}{8}$ " Fabric B square on top of one $3\frac{3}{8}$ " Fabric E square, right sides together. Draw a line across the diagonal of the top square (Fig. 1). Sew $\frac{1}{4}$ " away from each side of the drawn diagonal line (Fig. 1). Cut the two squares apart on the drawn diagonal line (Fig. 2) to make two BE units (Fig. 3). Trim BE units to measure 3" square. Repeat to make thirty-two BE units total.



Figure 1



Figure 2

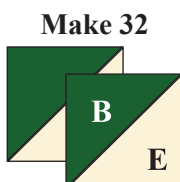


Figure 3

2. Repeat Step 1 using sixteen $3\frac{3}{8}$ " Fabric D squares and sixteen $3\frac{3}{8}$ " Fabric E squares to make thirty-two 3" DE units (Fig. 4).



Figure 4

3. Sew four BE units, one 3" Fabric E square and one $5\frac{1}{2}$ " Fabric G square together to make one Block One center (Fig. 5). Repeat to make eight Block One centers total.

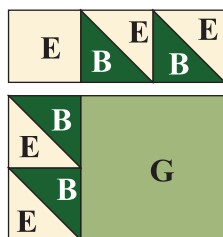


Figure 5

4. Sew one $1\frac{3}{4}$ " x 8" Fabric I strip to each side of one Block One center. Sew one $1\frac{3}{4}$ " x $10\frac{1}{2}$ " Fabric I strip to the top and to the bottom of the Block One center to complete one Block One (Fig. 6). Repeat to make eight Block Ones total.

Make 8

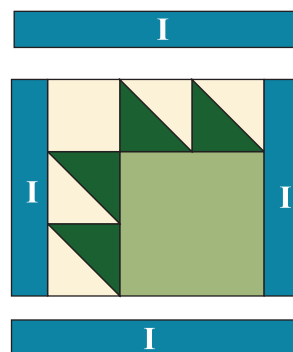


Figure 6

5. Repeat Steps 3-4 using thirty-two DE units, eight 3" Fabric E squares, eight $5\frac{1}{2}$ " Fabric C squares, sixteen $1\frac{3}{4}$ " x 8" Fabric F strips and sixteen $1\frac{3}{4}$ " x $10\frac{1}{2}$ " Fabric F strips together to make eight Block Twos (Fig. 7).

Make 8

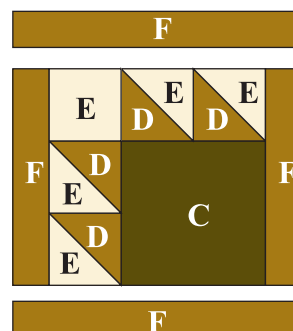


Figure 7

6. Sew one $2\frac{1}{2}$ " x $34\frac{1}{2}$ " Fabric B strip to the top and to the bottom of the Fabric A panel. Sew one 4" x $25\frac{1}{2}$ " Fabric B strip to each side of the Fabric A panel. Trim the block to measure $24\frac{1}{2}$ " x $40\frac{1}{2}$ " to make the Row Three (Fig. 8).

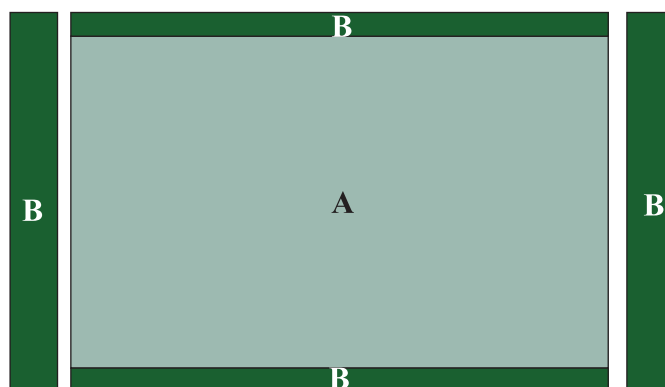


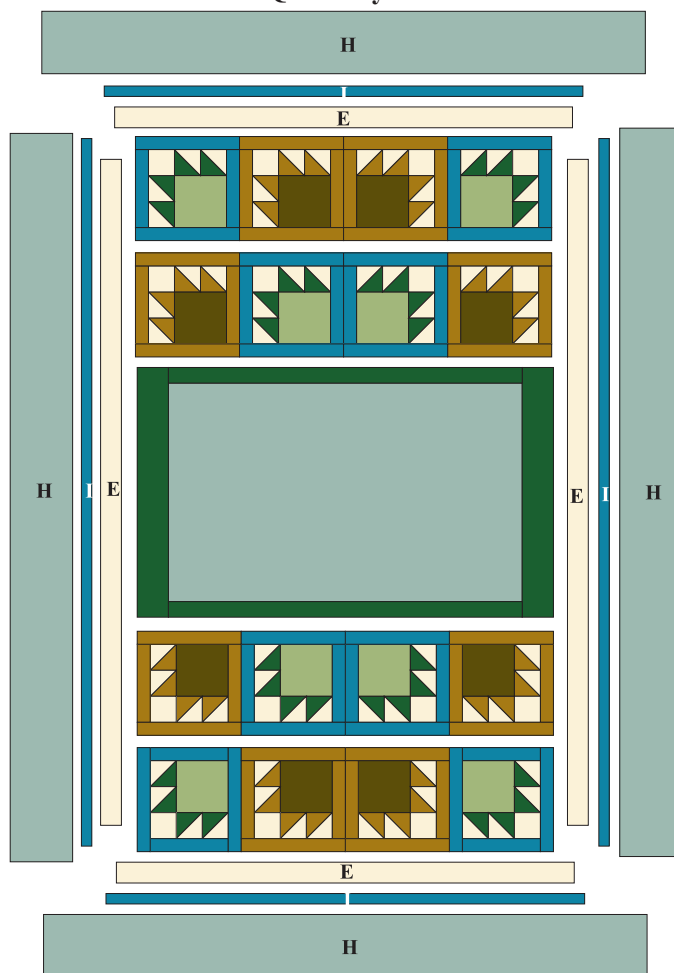
Figure 8

Quilt Assembly

(Refer to the quilt layout while assembling the quilt top)

7. Sew two Block Twos together. Sew one Block One to each side of the Block Two strip to make Row One. Repeat to make Row Five. Pay attention to the orientation of the blocks.
8. Sew two Block Ones together. Sew one Block Two to each side of the Block One strip to make Row Two. Repeat to make Row Four. Pay attention to the orientation of the blocks.
9. Sew the five rows together, in numerical order, to make the quilt top.
10. Sew one $2\frac{1}{2}$ " x $64\frac{1}{2}$ " Fabric E strip to each side of the quilt top. Sew one $2\frac{1}{2}$ " x $44\frac{1}{2}$ " Fabric E strip to the top and to the bottom of the quilt top.
11. Sew one $1\frac{1}{2}$ " x $68\frac{1}{2}$ " Fabric I strip to each side of the quilt top. Sew one $1\frac{1}{2}$ " x $46\frac{1}{2}$ " Fabric I strip to the top and to the bottom of the quilt top.
12. Sew one $6\frac{1}{2}$ " x $70\frac{1}{2}$ " Fabric H strip to each side of the quilt top. Sew one $6\frac{1}{2}$ " x $58\frac{1}{2}$ " Fabric H strip to the top and to the bottom of the quilt top.
13. Layer and quilt as desired.
14. Sew the eight $2\frac{1}{2}$ " x **WOF** Fabric I strips together, end to end with 45° seams, to make the binding. Fold this long strip in half, lengthwise with wrong sides together, and press.
15. Bind as desired.

Quilt Layout



While all possible care has been taken to ensure the accuracy of this pattern, we are not responsible for printing errors or the way in which individual work varies.